

LOC/DME I-MCE <b>109.3</b> Chan 30	APP CRS <b>123°</b>	Rwy Ldg TDZE Apt Elev	<b>5914</b> <b>155</b> <b>155</b>
--	------------------------	-----------------------------	---

# LOC BC RWY 12

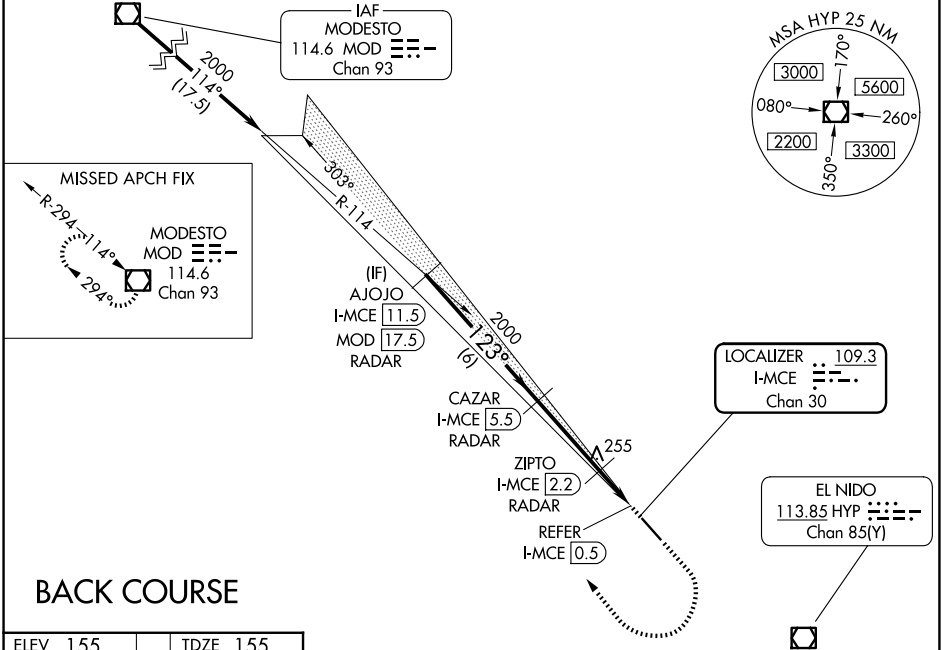
MERCED YOSEMITE RGNL (MCE)

DME or RADAR required.

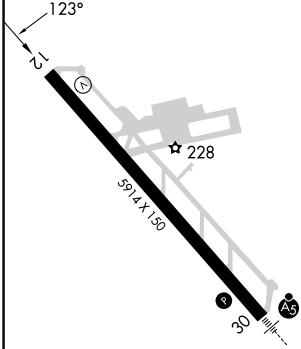
⚠ Rwy 12 helicopter visibility reduction below 3/4 SM NA. Circling NA northeast of Rwy 12-30.

⚠ MISSED APPROACH: Climb to 1000 then climbing right turn to 3000 direct MOD VOR/DME and hold.

ASOS <b>132.175</b>	NORCAL APP CON <b>120.95 269.45</b>	UNICOM <b>122.7 (CTAF) 0</b>
------------------------	--	---------------------------------



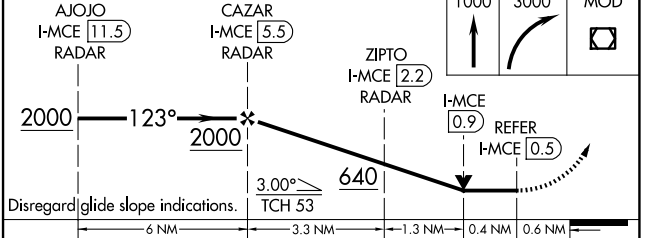
ELEV 155	TDZE 155
----------	----------



REIL Rwy 12 0  
HIRL Rwy 12-30 0

FAF to MAP 5 NM

Knots	60	90	120	150	180
Min:Sec	5:00	3:20	2:30	2:00	1:40



CATEGORY	A	B	C	D
S-12	640-1	485 (500-1)	640-1 3/8	485 (500-1 3/8)
CIRCLING	640-1	485 (500-1)	640-1 1/2	720-2 485 (500-1 1/2) 565 (600-2)
ZIPTO FIX MINIMUMS				
S-12	520-1 365 (400-1)	NA		
CIRCLING	560-1 405 (500-1)	620-1 465 (500-1)	620-1 1/2 465 (500-1 1/2)	720-2 565 (600-2)

SW-2, 11 JUN 2026 to 09 JUL 2026

SW-2, 11 JUN 2026 to 09 JUL 2026