


WAAS CH 40411 W17A	APP CRS 168°	Rwy Ldg TDZE Apt Elev	10000 5708 5759
--	------------------------	-----------------------------	--

RNAV (GPS) RWY 17

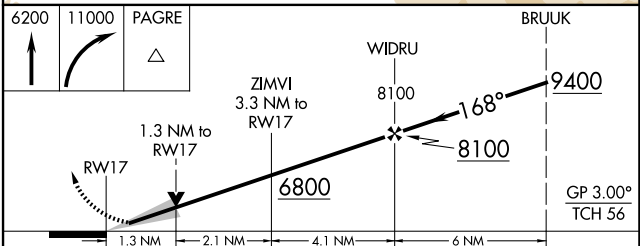
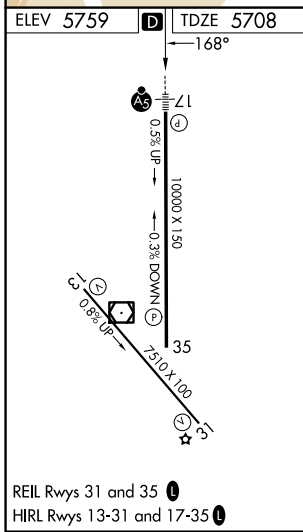
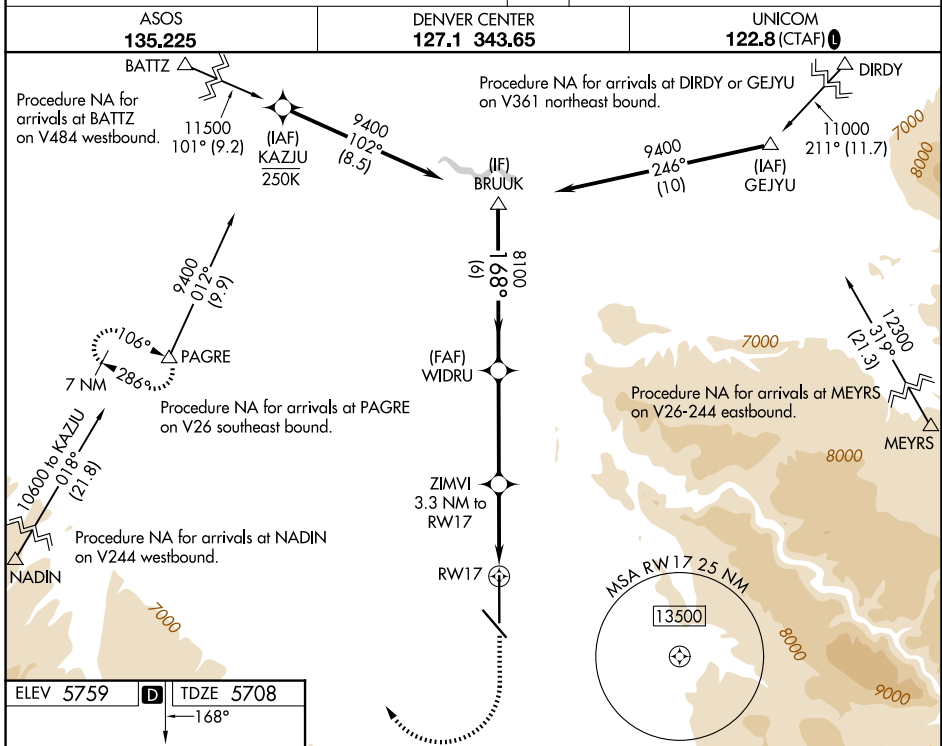
MONTROSE RGNL (MTJ)

RNP APCH - GPS.

⚠ Circling NA east of Rwy 17 and northeast of Rwy 31. Circling Rwy 31 NA at night. When Circling to Rwy 13 at night, operational VGSJ required, remain on or above VGSJ glidepath until threshold. Baro-VNAV NA.

MALSRL 

MISSED APPROACH: (Do not exceed 250K until PAGRE) Climb to 6200 then climbing right turn to 11000 direct PAGRE and hold, continue climb in hold to 11000.



CATEGORY	A	B	C	D
LPV DA		5908-1/2	200 (200-1/2)	
LNAV/VNAV DA		6136-3/4	428 (400-3/4)	
LNAV MDA	6160-1/2	452 (500-1/2)	6160-3/4	452 (500-3/4)
CIRCLING	6280-1 521 (600-1)	6320-1 561 (600-1)	6420-1 3/4 661 (700-1 3/4)	6800-3 1041 (1100-3)

SW-1, 11 JUN 2026 to 09 JUL 2026

SW-1, 11 JUN 2026 to 09 JUL 2026