

ATLANTIC CITY, NEW JERSEY

HI-VOR or TACAN RWY 31

VORTAC ACY 117.15 Chan 118(Y)	APCH CRS 302°	Rwy Idg 10,001 TDZE 64 Arprt Elev 75
---	-------------------------	---

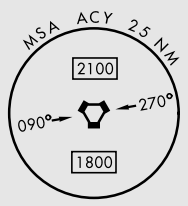
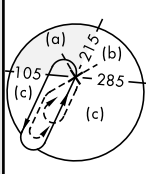
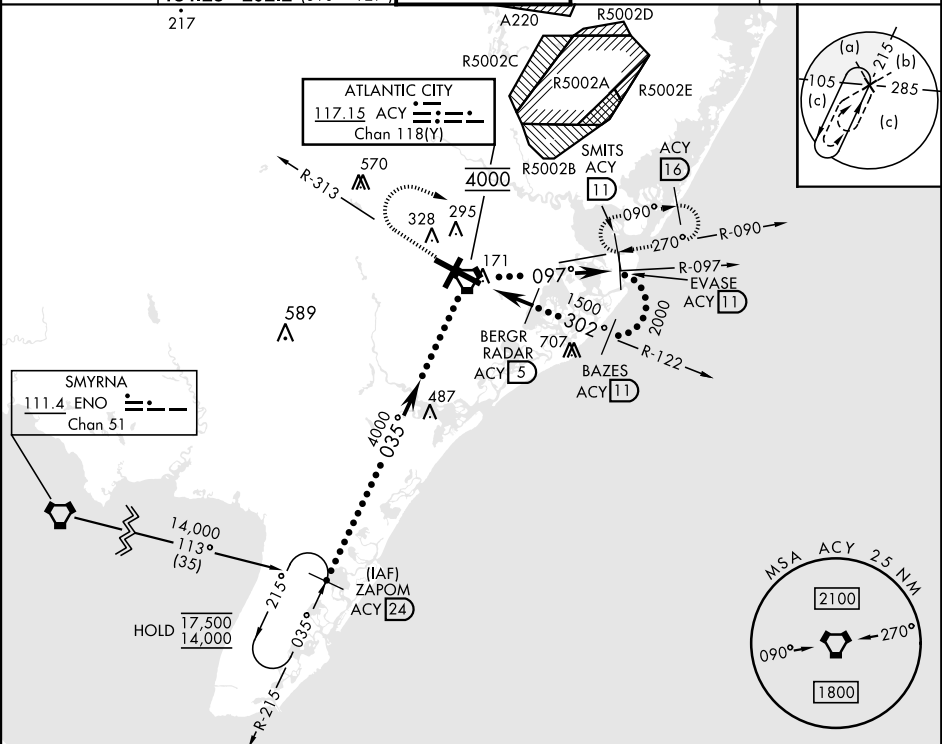
[USAF]

ATLANTIC CITY INTL (KACY)

DME or RADAR required

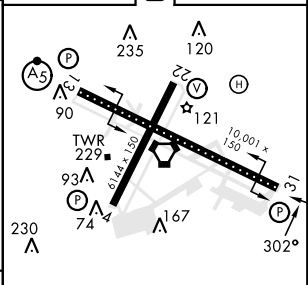
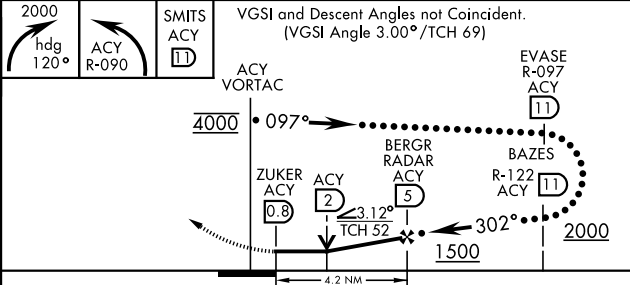
MISSED APPROACH: Climbing right turn to 2000 on heading 120° and on ACY R-090 to SMITS/ACY 11 DME and hold.

ATIS 125.725 316.15	APP CON 124.6 327.125 (130° - 309°) 134.25 292.2 (310° - 129°)	TOWER 120.3 239.0	GND CON 121.9 284.6	CLNC DEL 127.85 353.775
-------------------------------	--	-----------------------------	-------------------------------	-----------------------------------



EMERG SAFE ALT 100 NM 4200

ELEV	75	TDZE	64
------	----	------	----



CATEGORY	C	D	E
S-31	500-1 1/4	436	(500-1 1/4)
CIRCLING	620-1 1/2 545 (600-1 1/2)	640-2 565 (600-2)	760-2 1/2 685 (700-2 1/2)

REIL Rwy 31
 HIRL Rwy 4-22 and 13-31
 TDZL/CL Rwy 13

ATLANTIC CITY, NEW JERSEY
 Amdt 4C 25JAN24

39°27'N-74°35'W

ATLANTIC CITY INTL (KACY)

HI-VOR or TACAN RWY 31

NE-2, 11 JUN 2026 to 09 JUL 2026

NE-2, 11 JUN 2026 to 09 JUL 2026