

VOR/DME EWN 113.6 Chan 83	APP CRS 226°	Rwy Ldg 6153 TDZE 17 Apt Elev 18
---	------------------------	---

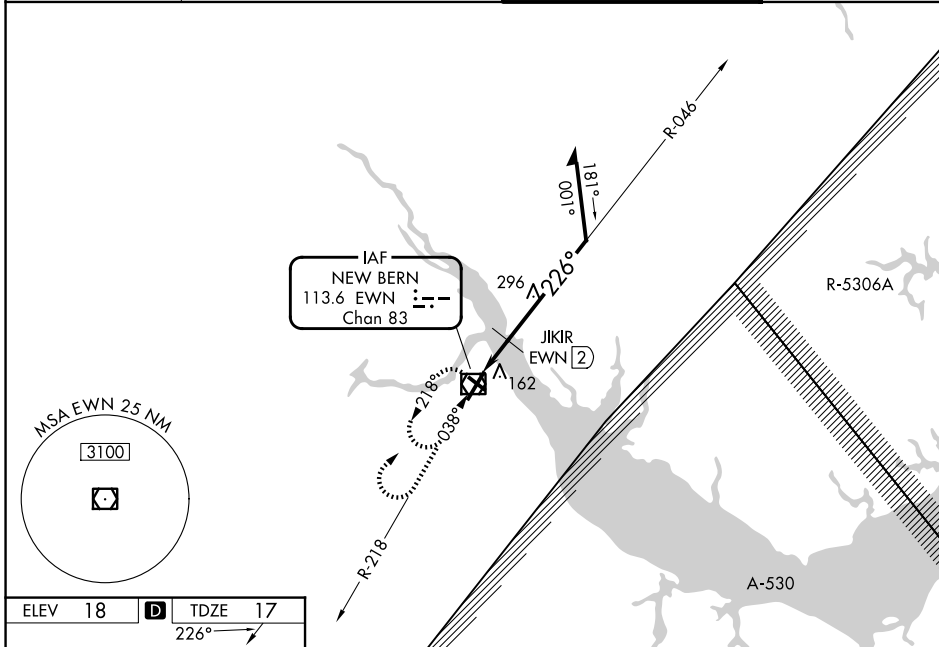
VOR RWY 22

COASTAL CAROLINA RGNL (EWN)

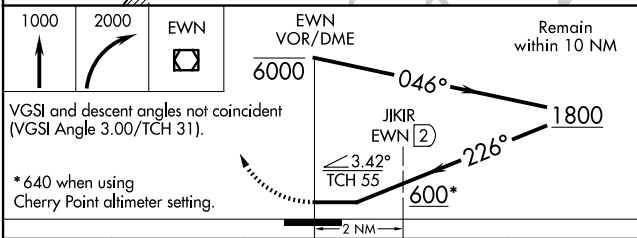
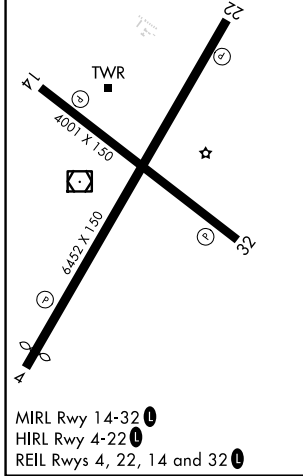
⚠ Rwy 14, 32 helicopter visibility reduction below 1 SM NA. Rwy 22 helicopter visibility reduction below 3/4 SM NA. Circling Rwy 14, 32 NA at night. JIKIR fix minimums:
⚠ S-22 Cat D minimums NA when using Cherry Point altimeter setting. When local altimeter setting not received, use Cherry Point altimeter setting and increase all MDAs 40 feet and Circling Cat D visibility 1/4 SM and JIKIR fix minimums Circling Cat C/D visibility 1/4 SM.

MISSED APPROACH: Climb to 1000 then climbing right turn to 2000 direct EWN VOR/ DME and hold, continue climb-in-hold to 2000.

ASOS 118.525	CHERRY POINT APP CON 119.35 377.175	NEW BERN TOWER ★ 124.25 (CTAF) 0	GND CON 121.7
------------------------	---	--	-------------------------



ELEV 18	D	TDZE 17
----------------	----------	----------------



CATEGORY	A	B	C	D
S-22	600-1	583 (600-1)	600-1 3/4	583 (600-1 3/4)
CIRCLING	600-1	582 (600-1)	600-1 3/4 582 (600-1 3/4)	860-2 3/4 842 (900-2 3/4)
JIKIR FIX MINIMUMS (DME REQUIRED)				
S-22	480-1	463 (500-1)	480-1 3/8	463 (500-1 3/8)
CIRCLING	480-1 462 (500-1)	520-1 502 (600-1)	600-1 1/2 582 (600-1 1/2)	860-2 3/4 842 (900-2 3/4)

SE-2, 11 JUN 2026 to 09 JUL 2026

SE-2, 11 JUN 2026 to 09 JUL 2026