


WAAS CH 86999	APP CRS 016°	Rwy Ldg 5600 TDZE 7 Apt Elev 13
-------------------------	------------------------	--

RNAV (GPS) RWY 2

TWEED/NEW HAVEN (HVN)

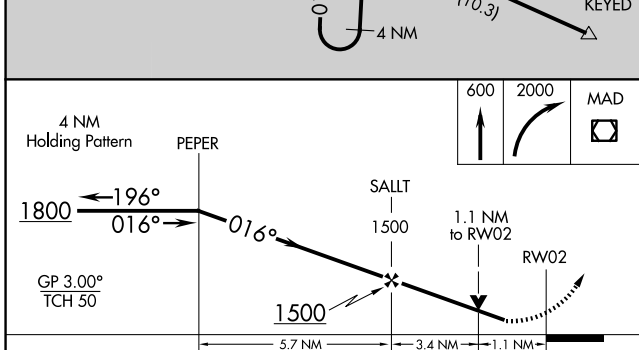
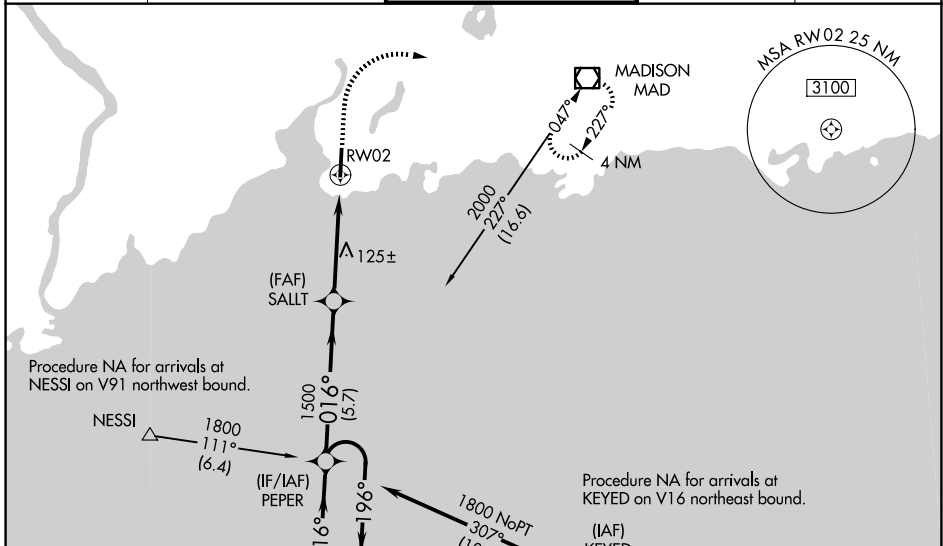
RNP APCH - GPS.

⚠ When local altimeter setting not received, use Long Island Mac Arthur altimeter setting; increase LPV DA to 375 feet; increase LNAV/VNAV DA to 446 feet and all visibilities to RVR 5000; increase all MDAs 100 feet and LNAV visibility Cat C/D to RVR 6000 and Circling visibility Cat C/D ¼ SM. For inop ALS when using Long Island Mac Arthur altimeter setting, increase LPV visibility all Cats to RVR 5500. For uncompensated Baro-VNAV systems, LNAV/VNAV NA below -1.4°C or above 54°C. Night landing: Rwy 14, 32 NA. Rwy 2 helicopter visibility reduction below RVR 4000 NA. Baro-VNAV and VDP NA when using Long Island Mac Arthur altimeter setting. For inop ALS, increase LPV all Cats visibility to RVR 4500.

MALSF 

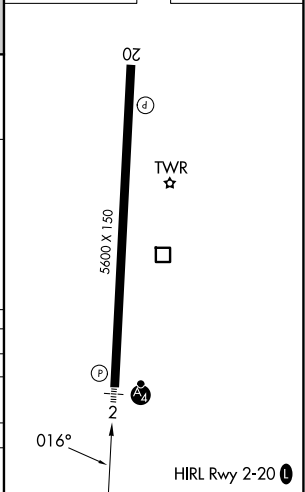
MISSED APPROACH: Climb to 600 then climbing right turn to 2000 direct MAD VOR/DME and hold.

ATIS 133.65	NEW YORK APP CON 124.075 343.65	NEW HAVEN TOWER★ 124.8 (CTAF) 	GND CON 121.7	UNICOM 122.95
-----------------------	---	---	-------------------------	-------------------------



ELEV 13	 TDZE 7
---------	--

CATEGORY	A	B	C	D
LPV DA		295/40	287 (300-¾)	
LNAV/VNAV DA		365/40	358 (400-¾)	
LNAV MDA	400/40	393 (400-¾)	400/45	393 (400-¾)
CIRCLING	720-1	707 (800-1)	780-2¼ 767 (800-2¼)	880-2¾ 867 (900-2¾)



NE-1, 11 JUN 2026 to 09 JUL 2026

NE-1, 11 JUN 2026 to 09 JUL 2026