

| | | |
|--|------------------------|---|
| WAAS CH 87118 W01A | APP CRS 012° | Rwy Ldg 5000 TDZE 324 Apt Elev 328 |
|--|------------------------|---|

RNAV (GPS) RWY 1

FLOYD BENNETT MEML (GFL)

⚠ For uncompensated Baro-VNAV systems, LNAV/VNAV NA below -18°C (0°F) or above 54°C (130°F). DME/DME RNP-0.3 NA. When local altimeter setting not received use Albany altimeter setting and increase all DA 91 feet and all MDA 100 feet; increase LNAV/VNAV all Cats 3/8 SM, LNAV Cat C/D and Circling Cat C visibility 1/4 SM. For inoperative ALS when using Albany altimeter setting, increase LPV all Cats visibility to 3/8 SM. Baro-VNAV and VDP NA when using Albany altimeter setting. Circling Rwy 12, 30 NA at night. Rwy 12, 30 helicopter visibility reduction below 1 SM NA.

MALSR



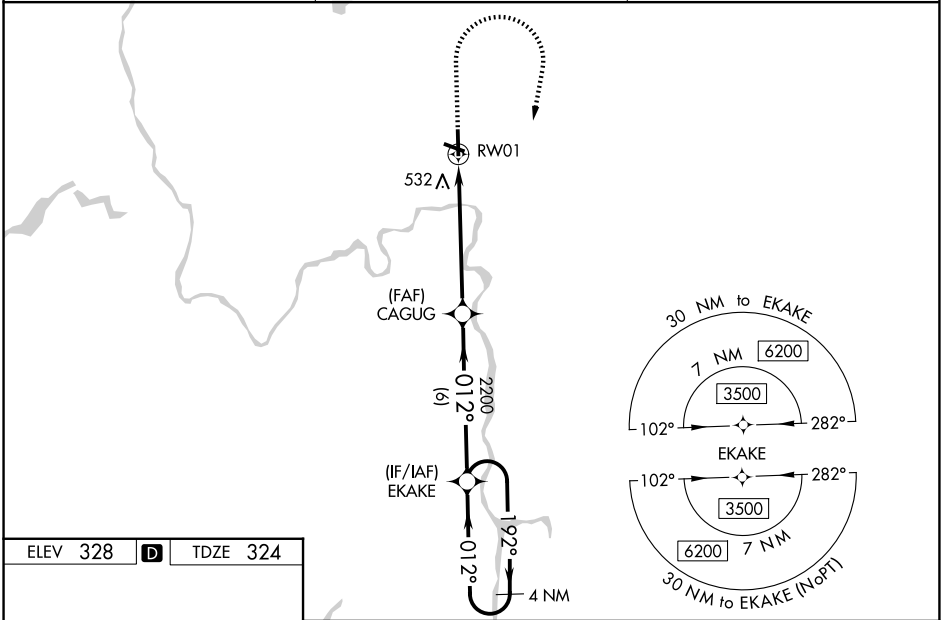
MISSED APPROACH:
Climb to 900 then climbing right turn to 3500 direct EKAKE and hold.

❄ -18°C

ASOS
119.925

ALBANY APP CON
132.825 307.2

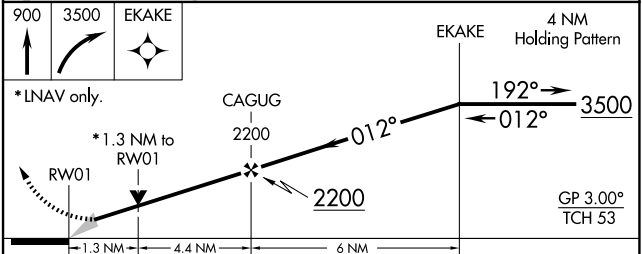
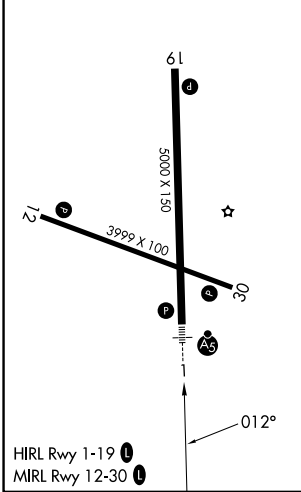
UNICOM
123.0 (CTAF) 0



NE-2, 11 JUN 2026 to 09 JUL 2026

NE-2, 11 JUN 2026 to 09 JUL 2026

| | | |
|----------|----------|----------|
| ELEV 328 | D | TDZE 324 |
|----------|----------|----------|



| | | | | |
|--------------|----------------------|----------------------|------------------------------|-------------------------|
| 900 | 3500 | EKAKE | 4 NM Holding Pattern | |
| *LNAV only. | | | | |
| RW01 | | CAGUG | EKAKE | |
| 1.3 NM | | 4.4 NM | 6 NM | 4 NM |
| CATEGORY | A | B | C | D |
| LPV DA | 524-1/2 | | 200 (200-1/2) | |
| LNAV/VNAV DA | 835-1/4 | | 511 (600-1/4) | |
| LNAV MDA | 800-1/2 | 476 (500-1/2) | 800-1 | 476 (500-1) |
| CIRCLING | 840-1 512 (600-1) | 860-1 532 (600-1) | 940-1 3/4 612 (700-1 3/4) | 1960-3 1632 (1700-3) |