

APP CRS	Rwy Ldg	<b>3999</b>
<b>305°</b>	TDZE	<b>325</b>
	Apt Elev	<b>328</b>

# RNAV (GPS) RWY 30

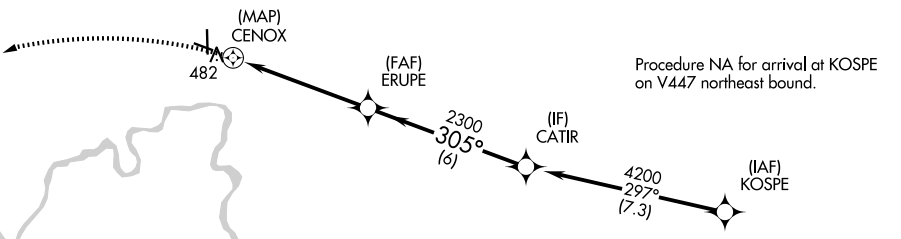
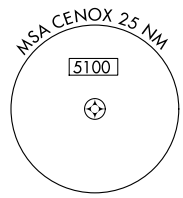
FLOYD BENNETT MEML (GFL)

RNP APCH.

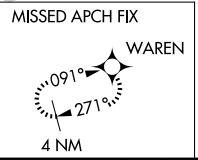
- Circling Rwy 12 NA at night.
- Rwy 30 helicopter visibility reduction below 3/4 SM NA.
- 18°C

MISSED APPROACH: Climbing left turn to 4000 direct WAREN and hold.

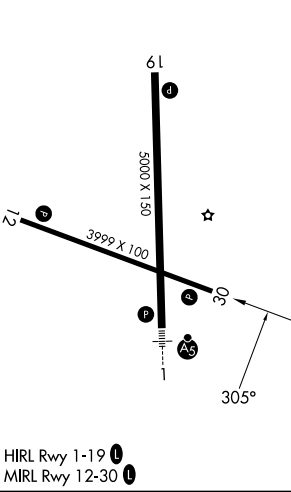
ASOS <b>119.925</b>	ALBANY APP CON <b>132.825 307.2</b>	UNICOM <b>123.0 (CTAF)</b>
------------------------	--	-------------------------------



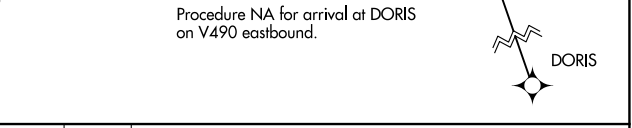
Procedure NA for arrival at KOSPE on V447 northeast bound.



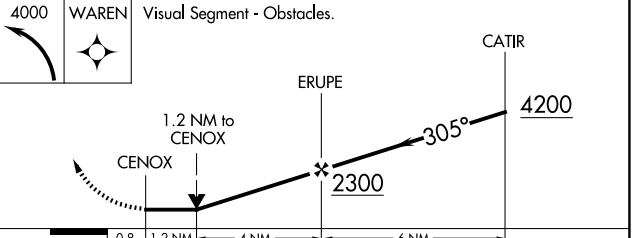
ELEV 328	<b>D</b>	TDZE 325
----------	----------	----------



HIRL Rwy 1-19   
 MIRL Rwy 12-30



Procedure NA for arrival at DORIS on V490 eastbound.



CATEGORY	A	B	C	D
LNAV MDA	1020-1	695 (700-1)	1020-2 695 (700-2)	1020-2 1/4 695 (700-2 1/4)
CIRCLING	1020-1	692 (700-1)	1020-2 692 (700-2)	1960-3 1632 (1700-3)

NE-2, 11 JUN 2026 to 09 JUL 2026

NE-2, 11 JUN 2026 to 09 JUL 2026