

WAAS CH 99320 W27A	APP CRS 272°	Rwy Ldg TDZE 34 Apt Elev 48
--	------------------------	---

RNAV (GPS) RWY 27

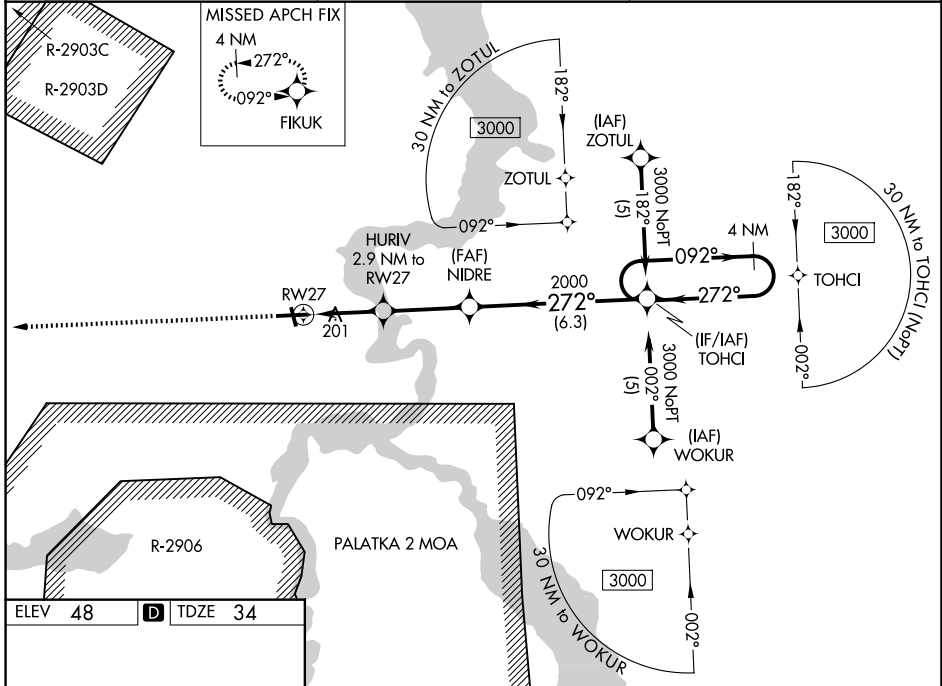
PALATKA MUNI/LT KAY LARKIN FLD (28J)

RNP APCH-GPS.

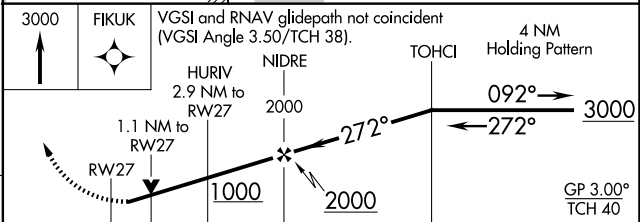
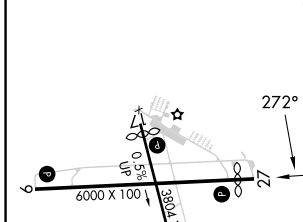
Baro-VNAV NA when using St. Augustine altimeter setting. For uncompensated Baro-VNAV systems, LNAV/VNAV NA below -15°C or above 54°C. Rwy 27 helicopter visibility reduction below ¼ SM NA. When local altimeter setting not received, use St Augustine altimeter setting and increase LPV DA to 419 feet and all visibilities ¼ SM. Increase LNAV/VNAV DA to 582 feet and all visibilities ¼ SM. Increase all MDAs 80 feet and LNAV visibility Cat C/D ½ SM, and Circling visibility Cat C/D ¼ SM. Circling Rwy 17, 35 NA at night.

MISSED APPROACH: Climb to 3000 direct FIKUK and hold. Continue climb-in-hold to 3000.

AWOS-3 119.925	JACKSONVILLE APP CON 118.175 338.25	UNICOM 122.8 (CTAF)
--------------------------	---	-------------------------------



ELEV 48	D	TDZE 34
---------	----------	---------



CATEGORY	A	B	C	D
LPV DA		354-7/8	320 (400-7/8)	
LNAV/VNAV DA		517-13/8	483 (500-13/8)	
LNAV MDA	460-1	426 (500-1)	460-1 1/4 426 (500-1 1/4)	460-1 1/4 426 (500-1 1/4)
CIRCLING	620-1	572 (600-1)	700-1 3/4 652 (700-1 3/4)	700-2 652 (700-2)

REIL Rws 9 and 27
MIRL Rws 9-27 and 17-35

SE-3, 11 JUN 2026 to 09 JUL 2026

SE-3, 11 JUN 2026 to 09 JUL 2026