

WAAS CH 40012 W16A	APP CRS 165°	Rwy Ldg TDZE Apt Elev	10518 100 100
--	------------------------	-----------------------------	--

RNAV (GPS) RWY 16

PORTSMOUTH INTL AT PEASE (PSM)

RNP APCH - GPS.

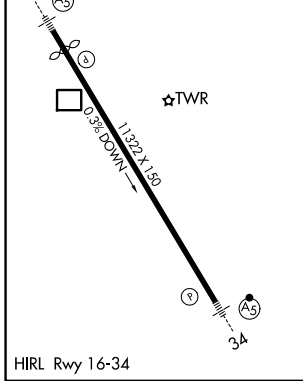
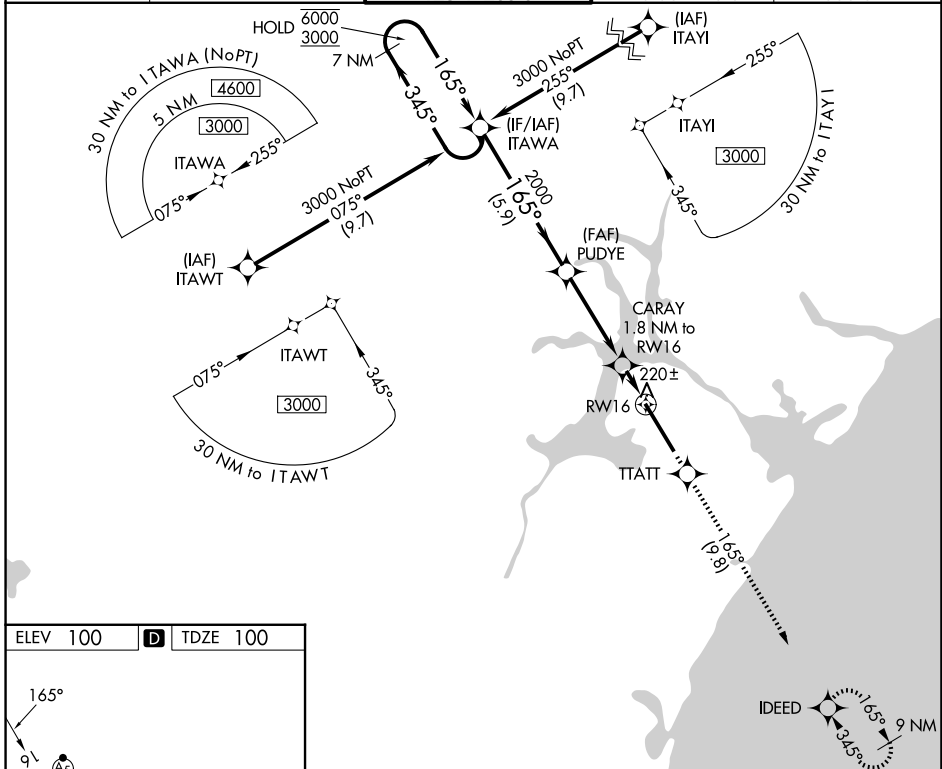
⚠ For uncompensated Baro-VNAV systems, LNAV/VNAV NA below -15°C or above 54°C. Circling NA east of Rwy 16-34. For inop ALS, increase LPV Cat E visibility to RVR 4500; increase LNAV/VNAV all Cats visibility to RVR 4500; increase LNAV Cat C/D/E visibility to RVR 5500. * RVR 1800 authorized with use of FD or AP or HUD to DA (NA when using Rochester altimeter setting).

MALSR



MISSED APPROACH:
Climb to 3000 direct TTATT and track 165° to IDEED and hold, continue climb-in-hold to 3000.

ATIS 132.05 273.5	BOSTON APP CON 125.05 269.4	PORTSMOUTH TOWER 128.4 269.0	GND CON 120.95 275.8	CLNC DEL 335.8
-----------------------------	---------------------------------------	---	--------------------------------	--------------------------



VGSIs and RNAV glidepaths not coincident 7 NM (VGSi Angle 3.00/TCH 72).				
Holding Pattern ITAWA				
6000	← 345°	→ 165°	2000	3000
GP 3.00° TCH 55		PUDYE	CARAY	IDEED
		2000	1.8 NM to RWY 16	tr 165°
		720	1 NM to RWY 16	
		← 5.9 NM	← 4 NM	← 0.8 NM
1 NM				
RWY 16				
CATEGORY	A	B	C	D
LPV DA*	300/24 200 (200-½)			
LNAV/VNAV DA	397/24 297 (300-½)			
LNAV MDA	480/24	380 (400-½)	480/35 380 (400-¾)	
CIRCLING	500-1	560-1	680-1½	780-2¼
	400 (400-1)	460 (500-1)	580 (600-½)	680 (700-2¼)
			800-2½	700 (700-2½)

NE-1, 11 JUN 2026 to 09 JUL 2026

NE-1, 11 JUN 2026 to 09 JUL 2026