

WAAS CH 77711	APP CRS W13A 130°	Rwy Ldg TDZE Apt Elev	6144 10 10
-------------------------	-----------------------------	-----------------------------	---------------------------------------

RNAV (GPS) RWY 13

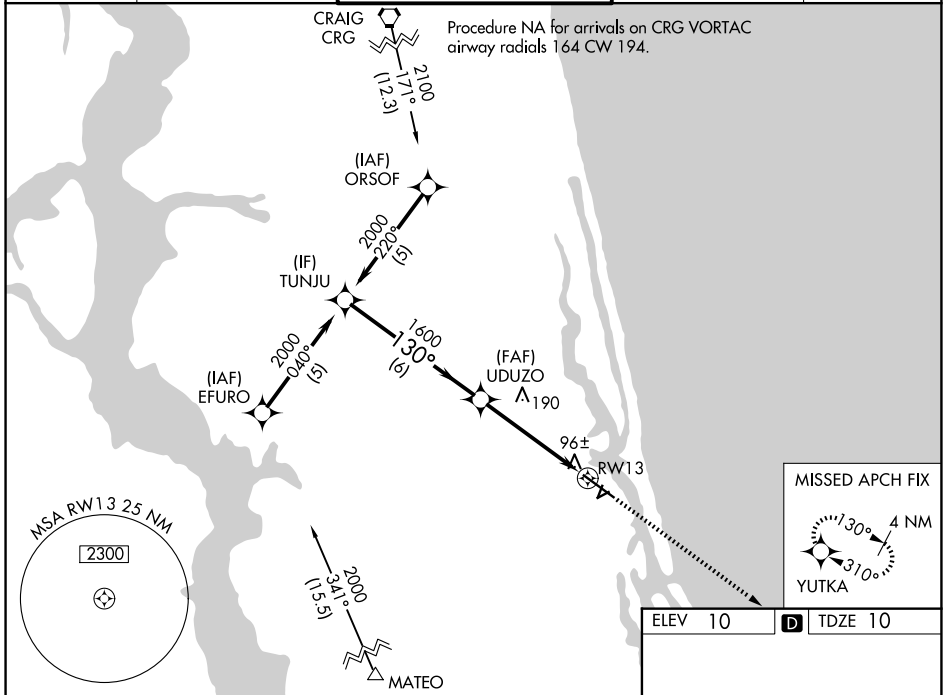
ST AUGUSTINE (SGJ)

RNP APCH

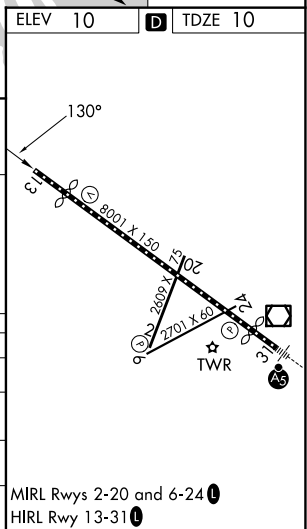
▼ Baro-VNAV NA when using Jacksonville NAS (Towers Fld) altimeter setting. For uncompensated Baro-VNAV systems, LNAV/VNAV NA below -15°C (5°F) or above 54°C (130°F). Rwy 13 helicopter visibility reduction below ¼ SM NA. When local altimeter setting not received, use Jacksonville NAS (Towers Fld) altimeter setting; increase all DA 57 feet and all MDA 60 feet. Increase LPV and LNAV/VNAV all Cats, LNAV Cat C and Circling Cat C/D visibility ½ SM. Circling Rwy 2, 6 NA at night.

MISSED APPROACH:
Climb to 2000 direct YUTKA and hold.

ATIS 119.625	JACKSONVILLE APP CON 120.75	ST AUGUSTINE TOWER ★ 127.625 (CTAF) 269.475	GND CON 121.175 251.125	UNICOM 122.95
------------------------	---------------------------------------	---	-----------------------------------	-------------------------



Procedure Turn NA	TUNJU	VGS1 and RNAV glidepath not coincident (VGS1 Angle 3.00/TCH 44).		2000	YUTKA
GP 3.00° TCH 58	130°		UDUZO	1600	RWY 13
CATEGORY	A	B	C	D	
LPV DA		357-1¼	347 (400-1¼)		
LNAV/DA VNAV		391-1¼	381 (400-1¼)		
LNAV MDA	460-1	450 (500-1)	460-1¼ 450 (500-1¼)	460-1½ 450 (500-1½)	
CIRCLING	520-1 510 (600-1)	580-1 570 (600-1)	660-1¾ 650 (700-1¾)	780-2½ 770 (800-2½)	



SE-3, 11 JUN 2026 to 09 JUL 2026

SE-3, 11 JUN 2026 to 09 JUL 2026