

WAAS CH <b>56629</b> <b>W33A</b>	APP CRS <b>326°</b>	Rwy Ldg TDZE Apf Elev	<b>3327</b> <b>66</b> <b>67</b>
--	------------------------	-----------------------------	---------------------------------------

# RNAV (GPS) RWY 33

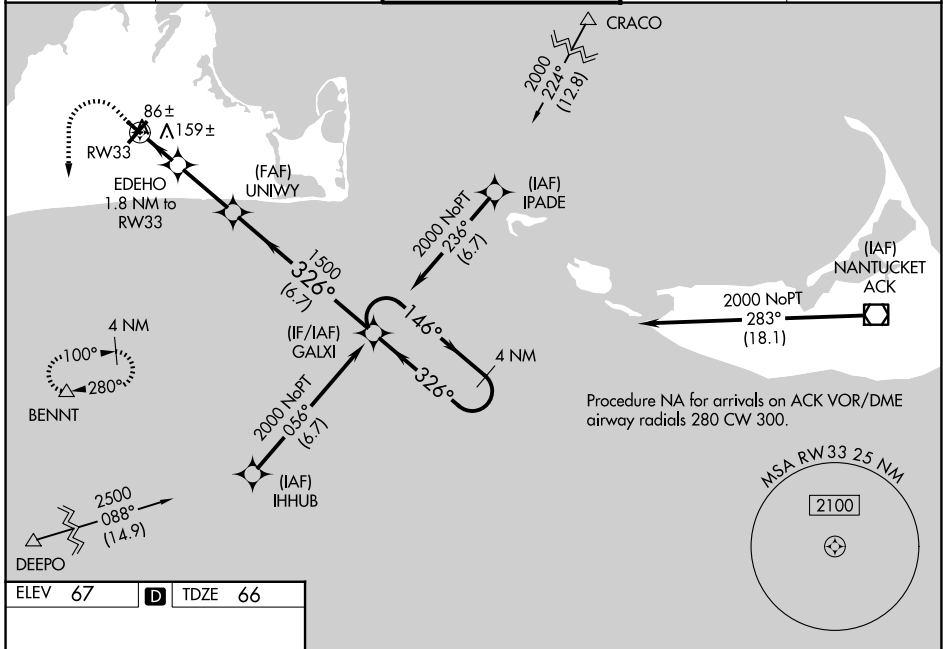
MARTHA'S VINEYARD (MVY)

RNP APCH.

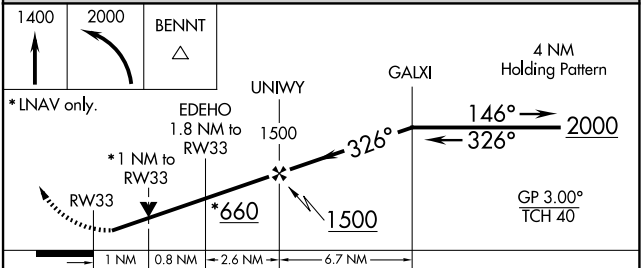
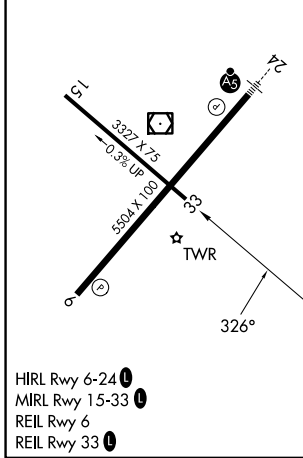
Baro-VNAV NA when using Hyannis altimeter setting. For uncompensated Baro-VNAV systems, LNAV/VNAV NA below -15°C or above 43°C. Rwy 33 helicopter visibility reduction below 3/4 SM NA. When local altimeter setting not received, use Hyannis altimeter setting and increase LPV DA to 370 feet, LNAV/VNAV DA to 393 feet, and all visibility 1/2 SM, increase all MDA 60 feet and Cat C and D visibilities 1/4 SM. Circling Rwy 15 NA at night. VDP NA with Hyannis altimeter setting.

MISSED APPROACH:  
Climb to 1400 then climbing left turn to 2000 direct BENNT and hold.

ATIS <b>126.25</b>	BOSTON APP CON <b>133.75</b>	VINEYARD TOWER ★ <b>121.4</b> (CTAF) <b>0</b>	GND CON <b>124.35</b>	UNICOM <b>122.95</b>
-----------------------	---------------------------------	--	--------------------------	-------------------------



ELEV 67	<b>D</b>	TDZE 66
---------	----------	---------



CATEGORY	A	B	C	D
LPV DA		316-1	250 (300-1)	
LNAV/ VNAV DA		339-1	273 (300-1)	
LNAV MDA		420-1	354 (400-1)	
CIRCLING	500-1 433 (500-1)	540-1 473 (500-1)	700-1 3/4 633 (700-1 3/4)	780-2 1/4 713 (800-2 1/4)

NE-1, 11 JUN 2026 to 09 JUL 2026

NE-1, 11 JUN 2026 to 09 JUL 2026