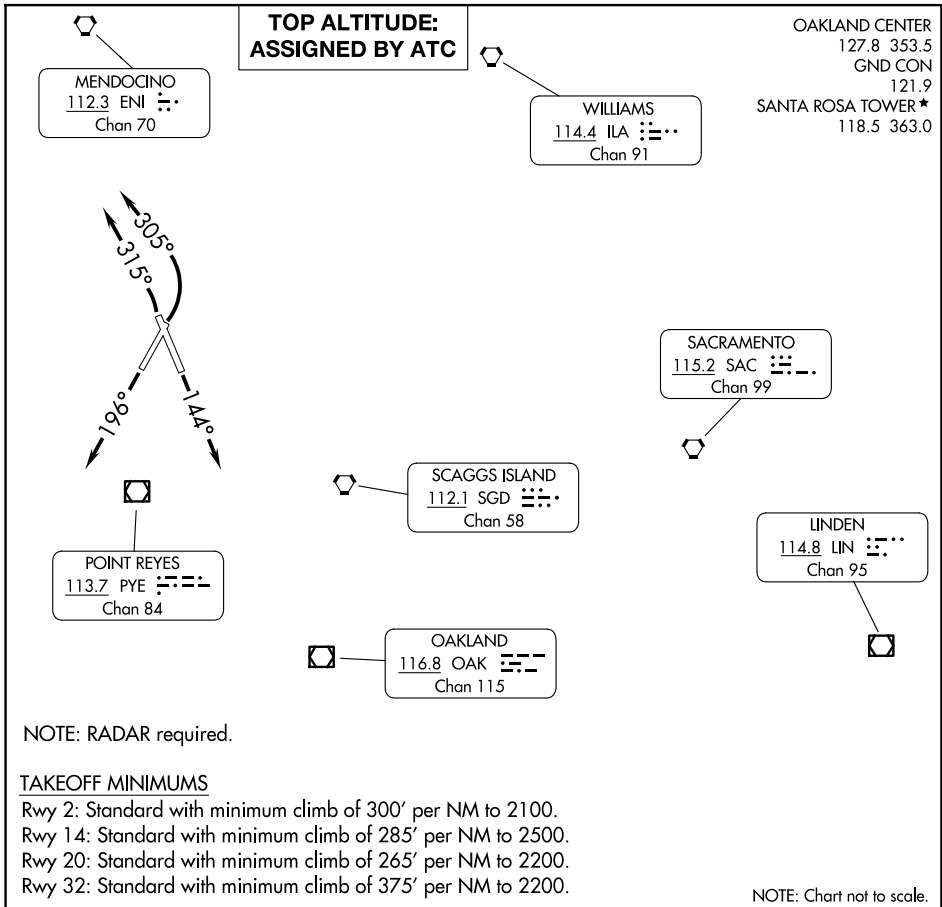


# CHARLIE EIGHT DEPARTURE



SW-2, 11 JUN 2026 to 09 JUL 2026

SW-2, 11 JUN 2026 to 09 JUL 2026

**DEPARTURE ROUTE DESCRIPTION**

**TAKEOFF RUNWAY 2:** Climbing left turn on heading 305° (or as assigned between 200° CW to 305° from departure end of runway), thence . . . .

**TAKEOFF RUNWAY 14:** Climb on heading 144° (or as assigned between 110° CW to 315° from departure end of runway), thence . . . .

**TAKEOFF RUNWAY 20:** Climb on heading 196° (or as assigned between 100° CW to 250° from departure end of runway), thence . . . .

**TAKEOFF RUNWAY 32:** Climbing left turn on heading 315° (or as assigned between 145° CW to 315° from departure end of runway), thence . . . .

. . . . expect RADAR vectors to join assigned route. Maintain ATC assigned altitude; expect filed altitude/flight level ten minutes after departure.

**LOST COMMUNICATIONS:** If not in contact with Oakland Center after reaching 4000, proceed direct to the PYE VOR/DME. Thence via assigned route.