

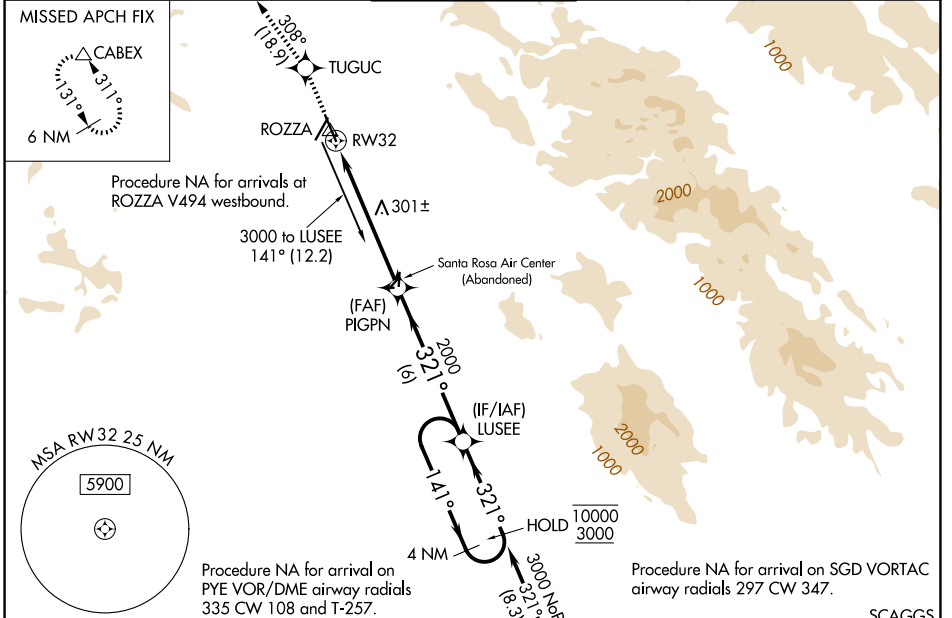
WAAS CH 72611 W32A	APP CRS 321°	Rwy Ldg 6000 TDZE 122 Apt Elev 129
--	------------------------	---

RNAV (GPS) RWY 32

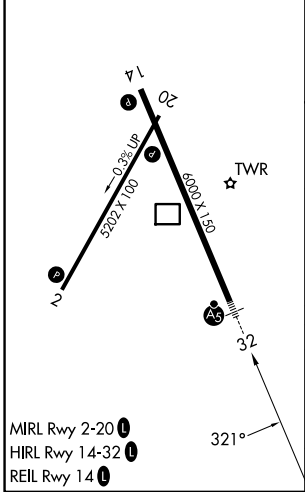
CHARLES M SCHULZ/SONOMA COUNTY (STS)

RNP APCH-GPS.	MALSRL 	MISSED APPROACH: Climb to 6000 direct TUGUC and on track 308° to CABEX and hold, continue climb-in-hold to 6000.
<p> For uncompensated Baro-VNAV systems, LNAV/VNAV NA below -4°C or above 54°C. #RVR 1800 authorized with use of FD or AP or HUD to DA.</p>		

ATIS 120.55	OAKLAND CENTER 127.8 353.5	SANTA ROSA TOWER* 118.5 (CTAF) 0 363.0	GND CON 121.9	UNICOM 122.95
-----------------------	--------------------------------------	--	-------------------------	-------------------------



ELEV 129	D	TDZE 122
----------	----------	----------



6000	TUGUC	tr 308°	CABEX	LUSEE	4 NM Holding Pattern
*LNAV only.				PIGPN	
		*1.2 NM to RW32		2000	
				2000	
				10000	
				3000	
				GP 3.00°	
				TCH 53	
				1.2	4.5 NM
				6 NM	

CATEGORY	A	B	C	D
LPV DA#		322/24	200 (200-½)	
LNAV/VNAV DA		570/50	448 (500-1)	
LNAV MDA	560/24	438 (500-½)	560/40	438 (500-¾)
CIRCLING	600-1 471 (500-1)	680-1 551 (600-1)	1080-3 951 (1000-3)	1420-3 1291 (1300-3)

SW-2, 11 JUN 2026 to 09 JUL 2026

SW-2, 11 JUN 2026 to 09 JUL 2026