

REDSTONE ARSENAL, ALABAMA

# RNAV (GPS) RWY 35

WAAS CH 50238 W35A	APCH CRS 353°	Rwy ldg TDZE Arpt Elev	7301 662 685
--------------------------	------------------	------------------------------	--------------------

(USA)

REDSTONE AAF (KHUA)

RNP APCH-GPS MISSED APPROACH: Climb to 3000 direct IPUDE and hold.

\* Circling not authorized E of Rwy 17-35.

ATIS 120.65	HUNTSVILLE APP CON/DEP CON* 125.6 354.1	TOWER* 126.95 (CTAF) 290.275	PAR
----------------	--	---------------------------------	-----

Visibility reduction by helicopters not authorized.

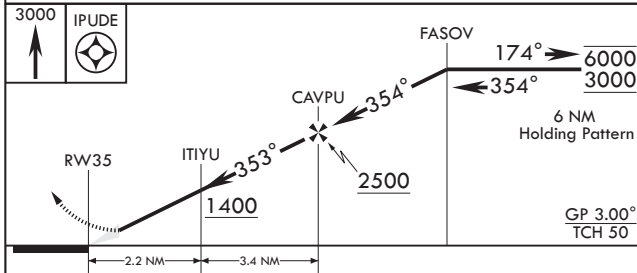
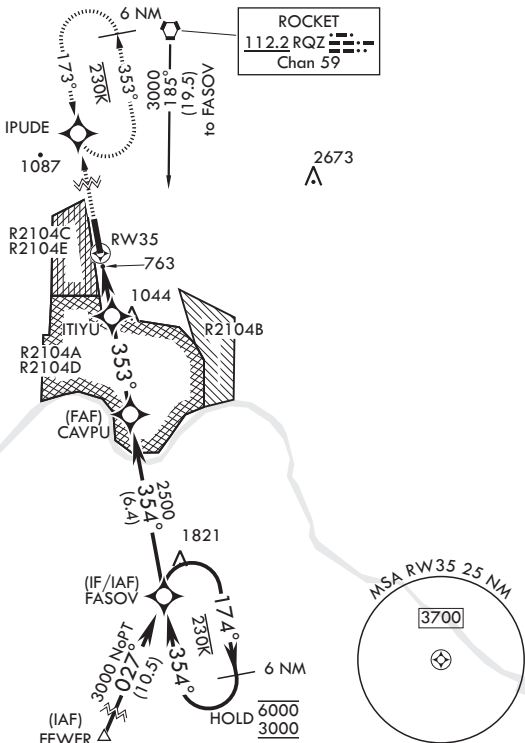
Inoperative table does not apply to LPV all CAT and LNAV CAT AB.

For uncompensated Baro-VNAV systems, LNAV/VNAV NA below -9°C (16°F) or above 54°C (130°F).

Procedure not authorized for arrivals at RQZ VORTAC airway R-147 CW R-261.

Procedure requires Redstone Tower approval when R2104A or R2104C or R2104D are active.

Procedure not authorized for arrivals at FEWER southeast bound on T429.



ELEV 685	AS L1	TDZE 662
<p>HIRL all rwys</p>		

CATEGORY	A	B	C	D	E
LPV DA	954-1		293	(300-1)	
LNAV/VNAV DA	1140-1 <sup>5</sup> / <sub>8</sub>		479	(500-1 <sup>1</sup> / <sub>4</sub> )	
LNAV MDA	1320-1 659 (700-1)		1320-1 <sup>7</sup> / <sub>8</sub>	659 (700-1 <sup>1</sup> / <sub>4</sub> )	
CIRCLING*	1320-1 635 (700-1)		1480-2 <sup>1</sup> / <sub>4</sub> 795 (800-2 <sup>1</sup> / <sub>4</sub> )	1740-3 1055 (1100-3)	

REDSTONE ARSENAL, ALABAMA

34°41'N - 86°41'W

REDSTONE AAF (KHUA)

Amdt 2A 14MAY26

# RNAV (GPS) RWY 35

SE-4, 11 JUN 2026 to 09 JUL 2026

SE-4, 11 JUN 2026 to 09 JUL 2026