

REDSTONE ARSENAL, ALABAMA

VOR RWY 35

VORTAC RQZ 112.2 Chan 59	APCH CRS 015°	Rwy ldg TDZE 662 Arprt Elev 685
--	-------------------------	--

[USA]

REDSTONE AAF (KHUA)

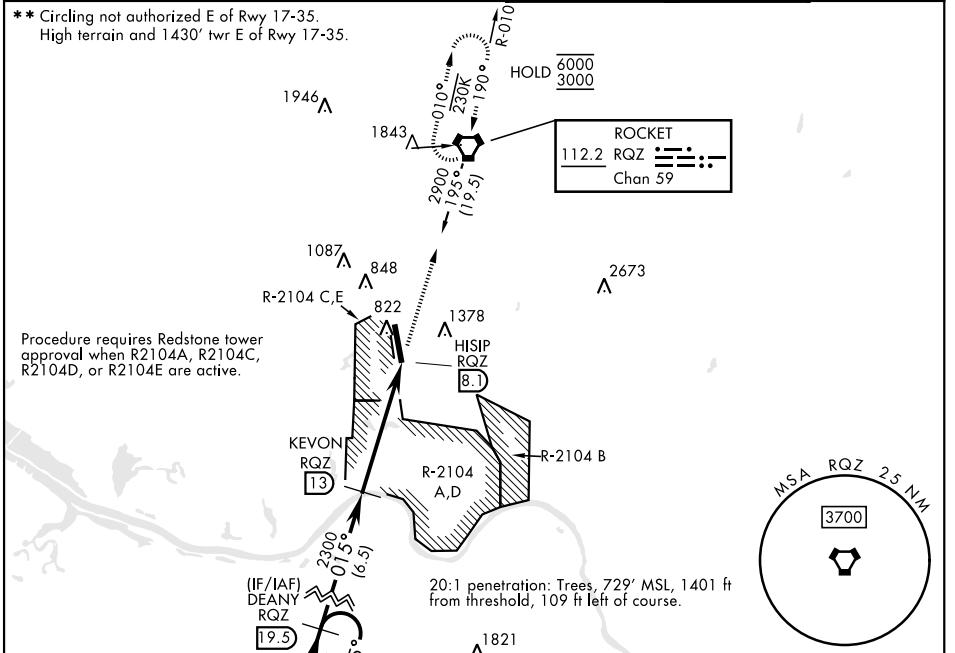
DME required

MISSED APPROACH: Climb to 3000 direct RQZ VORTAC and hold. Do not exceed 230 KIAS.

▼ * At night, operational VGSI required, remain on or above VGSI glidepath until threshold.
 ▲ Helicopter visibility reduction NA.

ATIS 120.65	HUNTSVILLE APP CON * 125.6 354.1	TOWER * 126.95 (CTAF) 290.275	PAR
-----------------------	--	--	-----

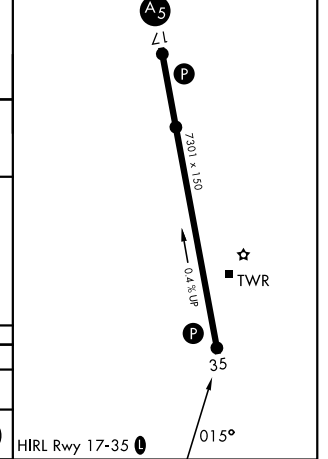
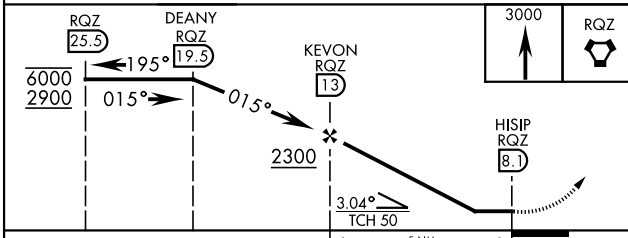
** Circling not authorized E of Rwy 17-35.
 High terrain and 1430' twr E of Rwy 17-35.



Procedure requires Redstone tower approval when R2104A, R2104C, R2104D, or R2104E are active.

20:1 penetration: Trees, 729' MSL, 1401 ft from threshold, 109 ft left of course.

ELEV 685	TDZE 662
----------	----------



CATEGORY	A	B	C	D	E
S-35 *	1500-1 839 (900-1)	1500-1¼ 839 (900-1¼)	1500-2½	839	(900-2½)
CIRCLING**	1500-1¼	815 (900-1¼)	1500-2½ 815 (900-2½)	1740-3	1055 (1100-3)

REDSTONE ARSENAL, ALABAMA
 Amdt 10A 14MAY26

34° 41' N-86° 41' W

REDSTONE AAF (KHUA)

VOR RWY 35

SE-4, 11 JUN 2026 to 09 JUL 2026

SE-4, 11 JUN 2026 to 09 JUL 2026