

WAAS CH 45508 W36A	APP CRS 002°	Rwy Ldg TDZE Apt Elev	8000 401 407
--	------------------------	-----------------------------	---

RNAV (GPS) RWY 36

OWENSBORO/DAVIESS COUNTY RGNL (OWB)

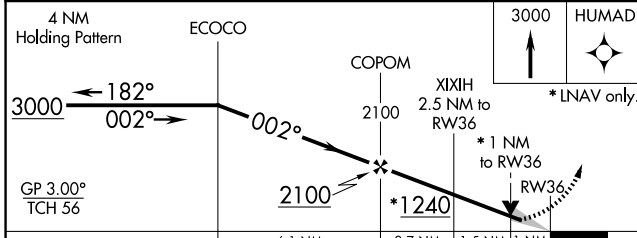
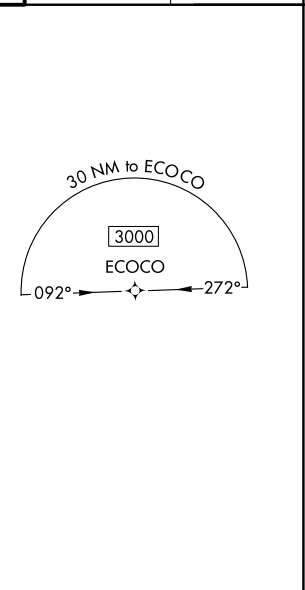
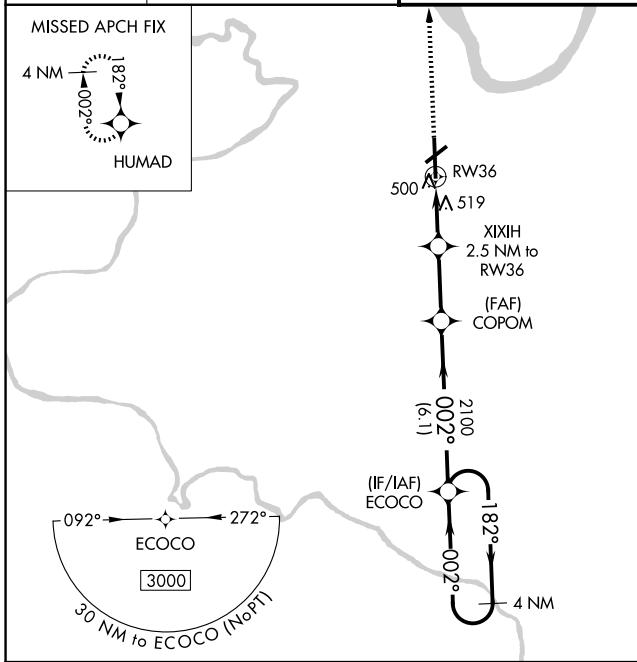
⚠ For uncompensated Baro-VNAV systems, LNAV/VNAV NA below -15°C (5°F) or above 54°C (130°F). DME/DME RNP-0.3 NA. Baro-VNAV and VDP NA when using Evansville altimeter setting. When local altimeter setting not received, use Evansville altimeter setting: increase LPV DA to 656 feet; increase LNAV/VNAV DA to 720 feet and all Cats visibility 1/8 mile; increase all MDA 60 feet and LNAV Cats C/D and Circling Cats C/D visibility 1/4 mile.

MALSR

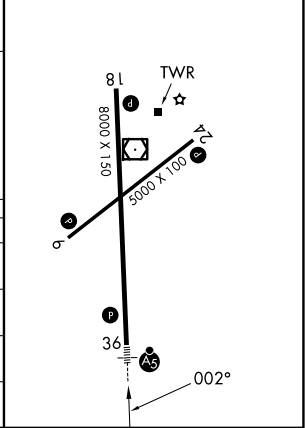


MISSED APPROACH:
Climb to 3000 direct HUMAD and hold.

AWOS-3PT 119.025	EVANSVILLE APP CON * 124.025 290.9	OWENSBORO TOWER * 120.7 (CTAF) 251.15	GND CON 121.7	UNICOM 122.95
----------------------------	--	---	-------------------------	-------------------------



ELEV 407	D	TDZE 401
MIRL Rwy 6-24	Ⓛ	
HIRL Rwy 18-36	Ⓛ	
REIL Rws 6, 18, and 24	Ⓛ	



CATEGORY	A	B	C	D
LPV DA		601-1/2	200 (200-1/2)	
LNAV/VNAV DA		665-1/2	264 (300-1/2)	
LNAV MDA	780-1/2	379 (400-1/2)	780-5/8	379 (400-5/8)
CIRCLING	860-1 453 (500-1)	1120-1 713 (800-1)	1140-2 733 (800-2)	1140-2 1/4 733 (800-2 1/4)

RNAV (GPS) RWY 36

SE-1, 11 JUN 2026 to 09 JUL 2026

SE-1, 11 JUN 2026 to 09 JUL 2026