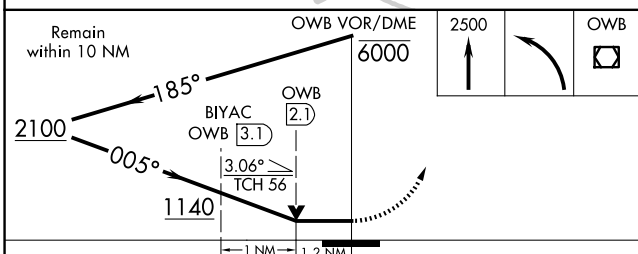
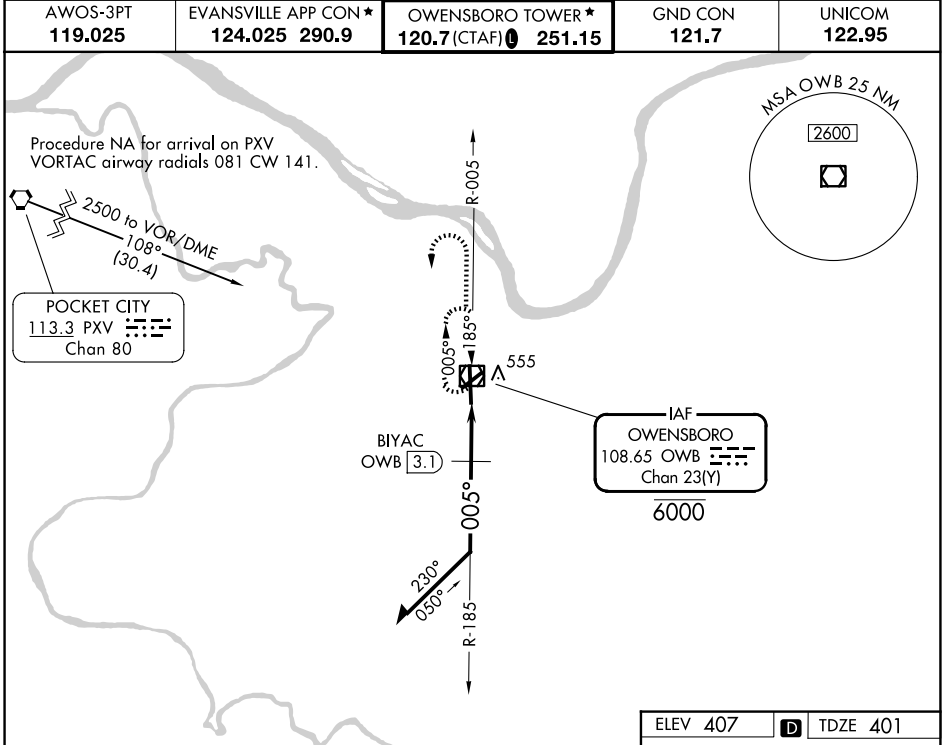


| | | | |
|---|------------------------|-----------------------------|---|
| VOR/DME OWB 108.65 Chan 23(Y) | APP CRS 005° | Rwy Ldg TDZE Apt Elev | 8000 401 407 |
|---|------------------------|-----------------------------|---|

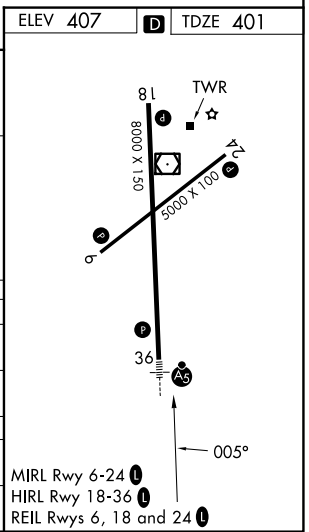
VOR RWY 36

OWENSBORO/DAVIESS COUNTY RGNL (OWB)

| | | | | |
|---|-------|--|--|---|
| For inop ALS, increase S-36 Cat C and D visibility to 2 SM and BIYAC fix minimums S-36 Cat C and D visibility to 1½ SM. | MALSR | MISSED APPROACH: Climb to 2500 then left turn direct OWB VOR/DME and hold. | | |
| | | AWOS-3PT 119.025 | EVANSVILLE APP CON ★ 124.025 290.9 | OWENSBORO TOWER ★ 120.7 (CTAF) 251.15 |



| CATEGORY | A | B | C | D |
|--------------------|----------------------|-----------------------|-----------------------|-------------------------|
| S-36 | 1140-½ | 739 (800-½) | 1140-1⅝ | 739 (800-1⅝) |
| CIRCLING | 1140-1 | 733 (800-1) | 1140-2 733 (800-2) | 1140-2¼ 733 (800-2¼) |
| BIYAC FIX MINIMUMS | | | | |
| S-36 | 820-½ | 419 (500-½) | 820-¾ | 419 (500-¾) |
| CIRCLING | 860-1 453 (500-1) | 1120-1 713 (800-1) | 1140-2 733 (800-2) | 1140-2¼ 733 (800-2¼) |



VOR RWY 36

SE-1, 11 JUN 2026 to 09 JUL 2026

SE-1, 11 JUN 2026 to 09 JUL 2026