

WAAS CH <b>58311</b> <b>W04A</b>	APP CRS <b>041°</b>	Rwy Ldg TDZE <b>751</b> Apt Elev <b>755</b>	<b>6502</b>
----------------------------------------	------------------------	---------------------------------------------------	-------------

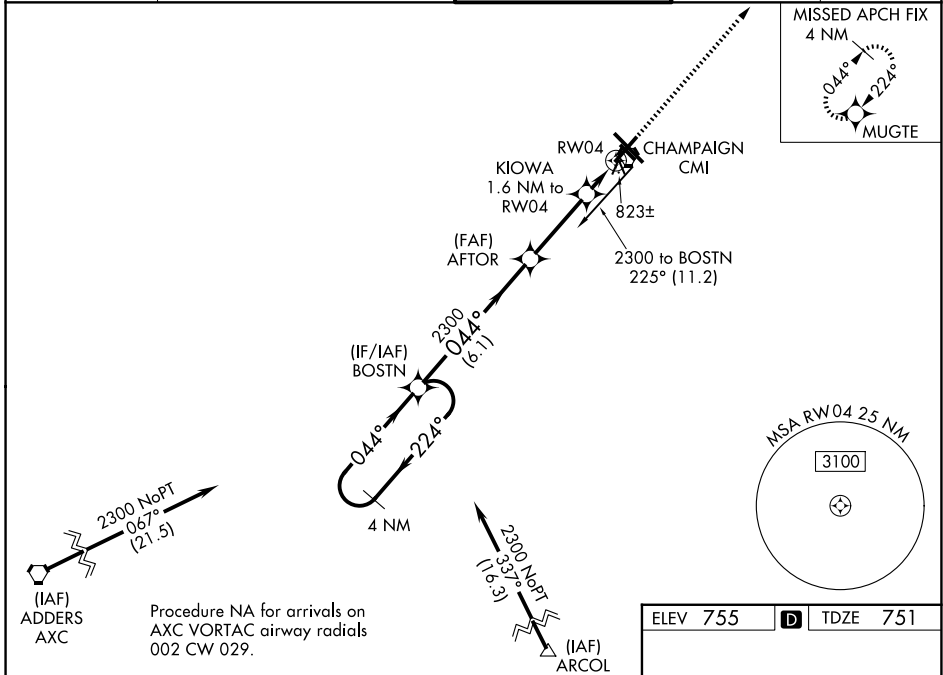
# RNAV (GPS) RWY 4

UNIVERSITY OF ILLINOIS/WILLARD (CMI)

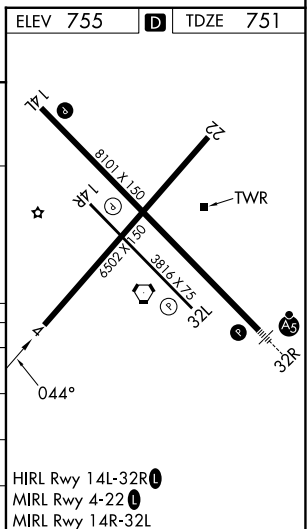
**ASR** For uncompensated Baro-VNAV systems, LNAV/VNAV NA below -21°C (-5°F) or above 54°C (130°F). When local altimeter setting not received, use Rantoul altimeter setting and increase all DA 41 feet, and all MDA 60 feet. Increase LNAV Cat D visibility ¼ mile. DME/DME RNP-0.3 NA. VDP and Baro-VNAV NA when using Rantoul altimeter setting.

MISSED APPROACH: Climb to 2800 direct MUGTE and hold.

ATIS <b>124.85</b>	CHAMPAIGN APP CON ★ <b>121.35 285.65</b> (319°-138°) <b>132.85 290.225</b> (139°-318°)	CHAMPAIGN TOWER ★ <b>120.4</b> (CTAF) <b>0 229.4</b>	GND CON <b>121.8</b>	UNICOM <b>122.95</b>
-----------------------	----------------------------------------------------------------------------------------------	---------------------------------------------------------	-------------------------	-------------------------



4 NM Holding Pattern		BOSTN	AFTOR	KIOWA	RWY04
2300 ← 224°		044° →	2300 ↘	1.6 NM to RWY04	0.9 NM to RWY04
GP 3.00° TCH 42		6.1 NM	3.1 NM	0.7 NM	0.9 NM
CATEGORY	A	B	C	D	
LPV DA	1001-1		250 (300-1)		
LNAV/VNAV DA	1083-1¼		332 (400-1¼)		
LNAV MDA	1080-1		329 (400-1)		
CIRCLING	1240-1	485 (500-1)	1500-2¼ 745 (800-2¼)	1500-2½ 745 (800-2½)	



EC-3, 11 JUN 2026 to 09 JUL 2026

EC-3, 11 JUN 2026 to 09 JUL 2026