

WAAS CH <b>78134</b> <b>W14A</b>	APP CRS <b>140°</b>	Rwy Ldg TDZE Apt Elev	<b>4001</b> <b>826</b> <b>832</b>
--	------------------------	-----------------------------	---

# RNAV (GPS) RWY 14

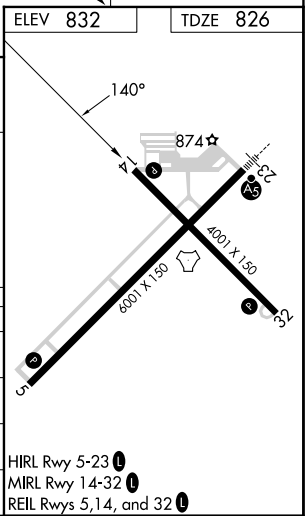
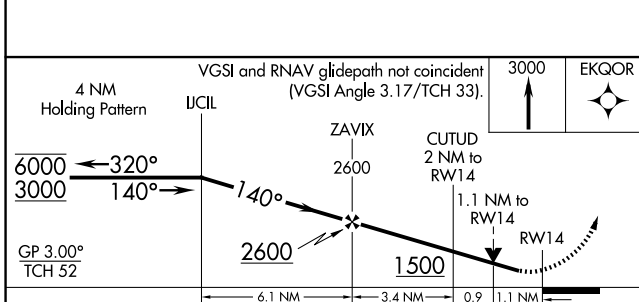
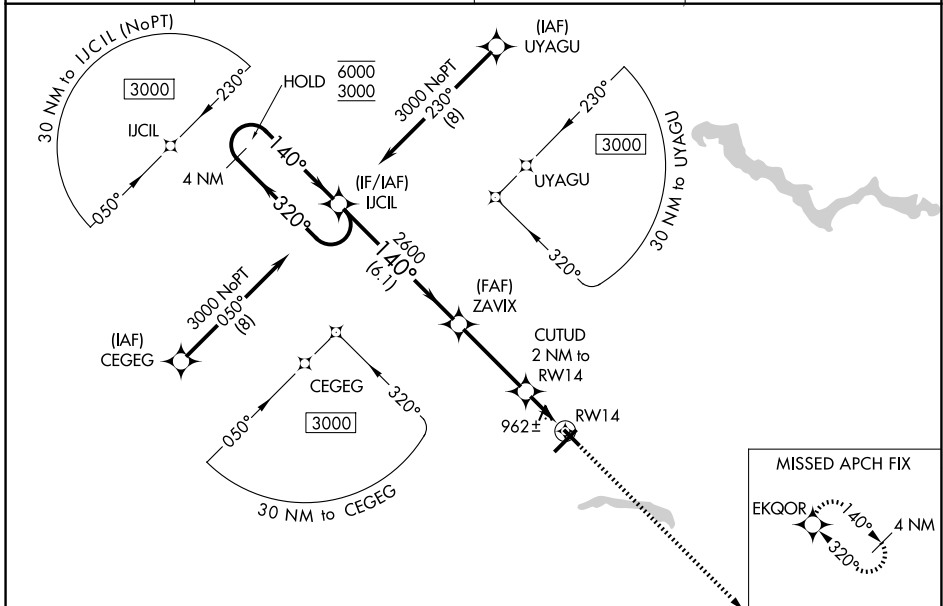
KOKOMO MUNI (OKK)

RNP APCH - GPS.

**⚠** Rwy 14 helicopter visibility reduction below ¾ SM NA. For uncompensated Baro-VNAV systems, LNAV/VNAV NA below -16°C or above 54°C.

MISSED APPROACH: Climb to 3000 direct EKGOR and hold.

AWOS-3PT <b>128.675</b>	GRISSOM APP CON* <b>121.05 338.275</b>	CLNC DEL <b>120.0</b>	UNICOM <b>123.0 (CTAF)</b>
----------------------------	---	--------------------------	-------------------------------



CATEGORY	A	B	C	D
LPV DA		1076-1	250 (300-1)	
LNAV/VNAV DA		1199-1	373 (400-1)	
LNAV MDA	1220-1	394 (400-1)	1220-1½	394 (400-1½)
CIRCLING	1280-1 448 (500-1)	1300-1 468 (500-1)	1400-1½ 568 (600-1½)	1420-2 588 (600-2)

EC-2, 11 JUN 2026 to 09 JUL 2026

EC-2, 11 JUN 2026 to 09 JUL 2026