

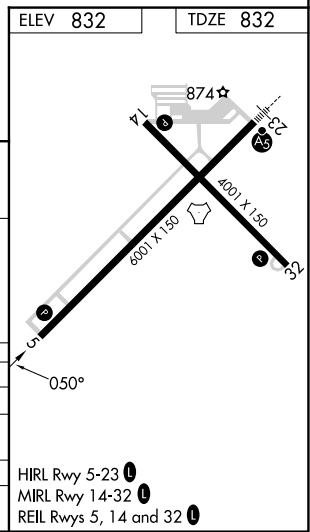
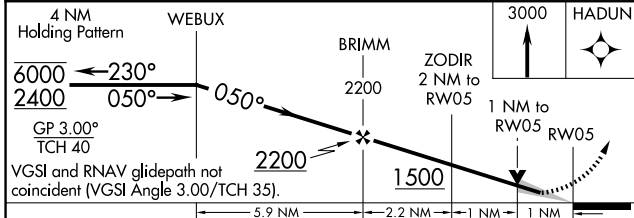
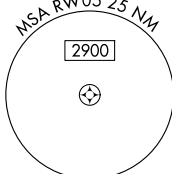
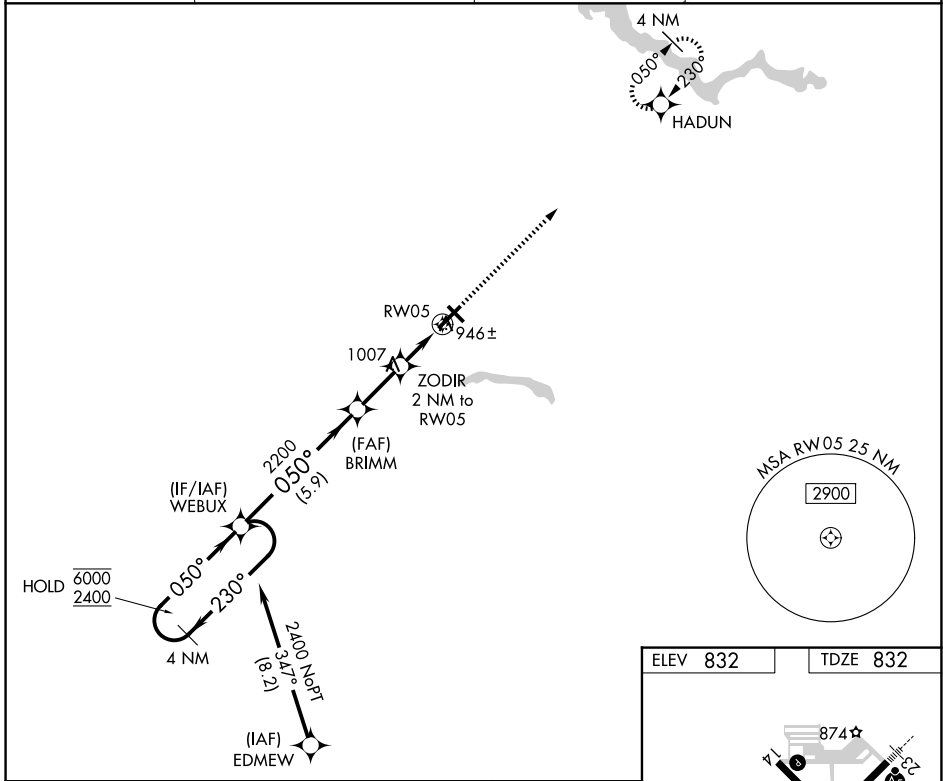
WAAS CH <b>78139</b> <b>W05A</b>	APP CRS <b>050°</b>	Rwy Ldg TDZE <b>832</b> Apt Elev <b>832</b>	<b>6001</b>
--	------------------------	---	-------------

# RNAV (GPS) RWY 5

KOKOMO MUNI (OKK)

RNP APCH - GPS.	MISSED APPROACH: Climb to 3000 direct HADUN and hold.
▼ For uncompensated Baro-VNAV systems, LNAV/VNAV NA below -16°C or above 54°C.	

AWOS-3PT <b>128.675</b>	GRISSOM APP CON ★ <b>121.05 338.275</b>	CLNC DEL <b>120.0</b>	UNICOM <b>123.0 (CTAF) 0</b>
----------------------------	--	--------------------------	---------------------------------



CATEGORY	A	B	C	D
LPV DA		1082- <sup>3</sup> / <sub>4</sub>	250 (300- <sup>3</sup> / <sub>4</sub> )	
LNAV/VNAV DA		1107- <sup>7</sup> / <sub>8</sub>	275 (300- <sup>7</sup> / <sub>8</sub> )	
LNAV MDA		1200-1	368 (400-1)	
CIRCLING	1280-1	1300-1	1400-1½	1420-2
	448 (500-1)	468 (500-1)	568 (600-1½)	588 (600-2)

EC-2, 11 JUN 2026 to 09 JUL 2026

EC-2, 11 JUN 2026 to 09 JUL 2026