

# ILS or LOC/DME RWY 27

LOC I-VOK <b>108.5</b>	APCH CRS <b>269°</b>	Rwy Idg THRE Arprt Elev <b>9000</b> <b>904</b> <b>912</b>	[USAF]	VOLK FLD (KVOK)
---------------------------	-------------------------	--	--------	-----------------

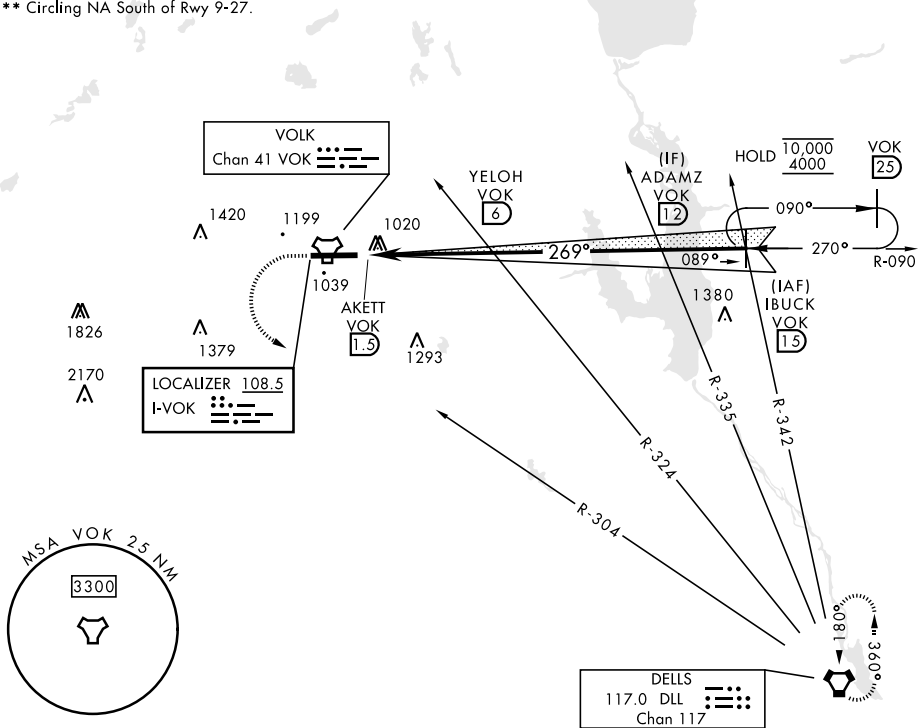
\* When ALS inop, increase vis to ¾ mile.  
 \*\* When ALS inop, increase CAT AB vis to 1 mile, CAT CDE vis to 1½ miles.
 

 ALSF-1  

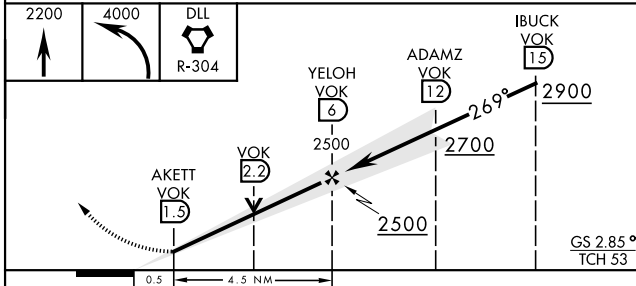
 MISSED APPROACH: Climb to 2200, then climbing left turn to 4000 via DLL VORTAC R-304 direct DLL and hold.

ATIS <b>134.35 257.85</b>	APP CON <b>135.25 244.875</b>	TOWER * <b>127.5</b> (CTAF) <b>239.25</b>	GND CON <b>121.9 275.8</b>
------------------------------	----------------------------------	--	-------------------------------

\*\*\* Circling NA South of Rwy 9-27.



EMERG SAFE ALT 100 NM 4200



ELEV	912	D	THRE	904	
HIRL Rwy 9-27					
FAF to MAP 4.5 NM					
Knots	60	90	120	150	180
Min:Sec	4:30	3:00	2:15	1:48	1:30

# ILS or LOC/DME RWY 27

EC-3, 11 JUN 2026 to 09 JUL 2026

EC-3, 11 JUN 2026 to 09 JUL 2026