

CAMP DOUGLAS, WISCONSIN

TACAN RWY 9

TACAN VOK Chan 41	APCH CRS 076°	Rwy ldg THRE Arpt Elev 9000 912 912
----------------------	------------------	--

[USAF]

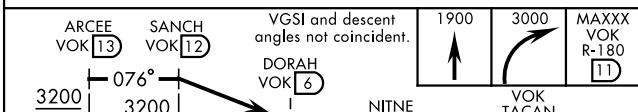
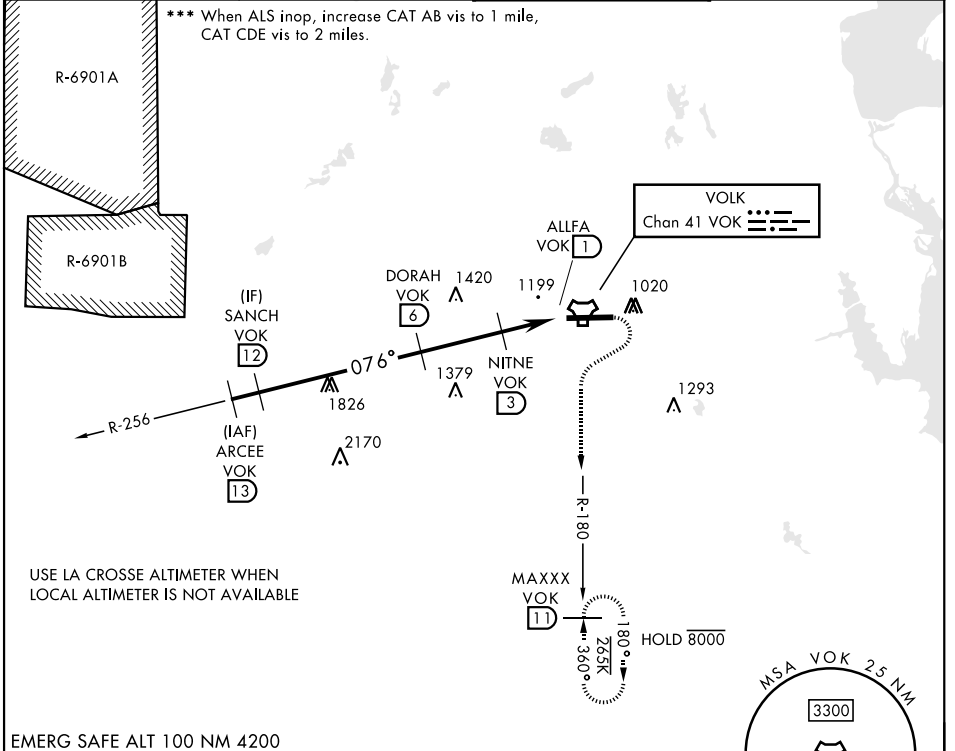
VOLK FLD (KVOK)

▼ * When ALS inop, increase CAT AB vis to 1 mile, CAT CDE vis to 1¾ miles.
 ** Circling not authorized South of Rwy 9-27.



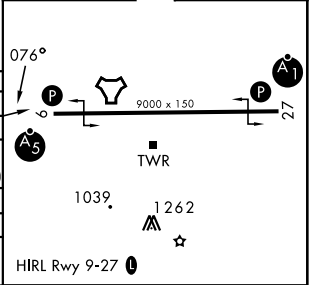
MISSED APPROACH: Climb to 1900, then climbing right turn to 3000 intercept VOK R-180 to MAXXX and hold.

ATIS 134.35 257.85	APP CON 135.25 244.875	TOWER ★ 127.5 (CTAF) 239.25 (0)	GND CON 121.9 275.8
------------------------------	----------------------------------	---	-------------------------------



ELEV	912	THRE	912
------	-----	------	-----

CATEGORY	A	B	C	D	E
S-9*	1500-¾	588 (600-¾)	1500-1¼	588 (600-1¼)	
CIRCLING **	1500-1	588 (600-1)	1500-1¾	1500-2	1580-2¼
LA CROSSE ALTIMETER SETTING MINIMUMS					
S-9***	1640-¾	728 (800-¾)	1640-1½	728 (800-1½)	
CIRCLING **	1640-1	728 (800-1)	1640-2	1640-2¼	1720-2¾
			728 (800-2)	728 (800-2¼)	808(900-2¾)



CAMP DOUGLAS, WISCONSIN

43°56'N-90°15'W

VOLK FLD (KVOK)

Amdt 3

TACAN RWY 9

EC-3, 11 JUN 2026 to 09 JUL 2026

EC-3, 11 JUN 2026 to 09 JUL 2026