

ALPENA, MICHIGAN

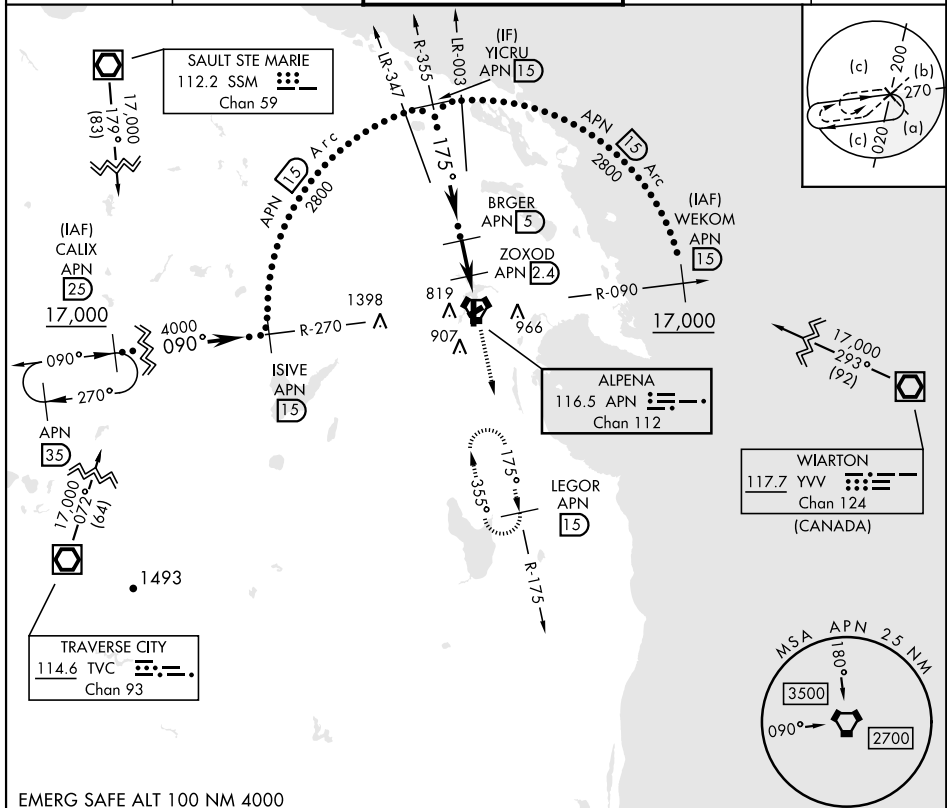
# HI-TACAN RWY 19

VORTAC APN <b>116.5</b> Chan <b>112</b>	APCH CRS <b>175°</b>	Rwy Ildg TDZE Arprt Elev <b>9001</b> <b>683</b> <b>690</b>	[USAF]	ALPENA COUNTY RGNL (KAPN)
---	-------------------------	---	--------	---------------------------

DME required

MISSED APPROACH: Climb to 5000 on APN R-175 to LEGOR (15 DME) and hold, continue climb in hold to 5000.

ATIS ★ <b>120.675 327.05</b>	ALPENA APP CON <b>128.425 379.3</b>	ALPENA TOWER ★ <b>121.35 (CTAF) 0 318.1</b>	GND CON <b>121.9 275.8</b>	UNICOM <b>122.95</b>
---------------------------------	--	--	-------------------------------	-------------------------



EC-1, 11 JUN 2026 to 09 JUL 2026

EC-1, 11 JUN 2026 to 09 JUL 2026

EMERG SAFE ALT 100 NM 4000

YICRU APN 15 2800 175° 2300 3.23° TCH 55 1380 2.6 NM 1.4 NM 0.6	VGSI and descent angles not coincident (VGSI Angle 3.00/TCH 39) BRGR APN 5 ZOXOD APN 2.4 JUDBI APN 1.8 APN VORTAC	5000 APN R-175 LEGOR APN 15	ELEV 690	TDZE 683
CATEGORY	C	D	E	
S-19	1140-1 3/8	457 (500-13%)		
CIRCLING	1220-1 1/2 530 (600-1 1/2)	1280-2 590 (600-2)	1320-2 1/4 630 (700-2 1/4)	

ALPENA, MICHIGAN  
Amdt 5C 13AUG20

45°05'N-83°34'W

ALPENA COUNTY RGNL (KAPN)

# HI-TACAN RWY 19

- HIRL Rwy 1-19
- MIRL Rwy 7-25
- REIL Rwy 7,25, and 19