

|  |                        |                             |   |
|--|------------------------|-----------------------------|---|
| WAAS<br>CH <b>82200</b><br><b>W18A</b> | APP CRS<br><b>185°</b> | Rwy Ldg<br>TDZE<br>Apt Elev | <b>6107</b><br><b>592</b><br><b>592</b> |
|--|------------------------|-----------------------------|---|

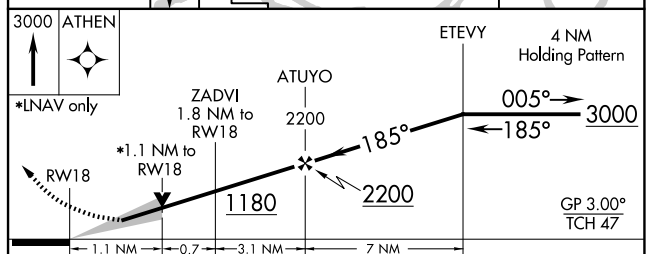
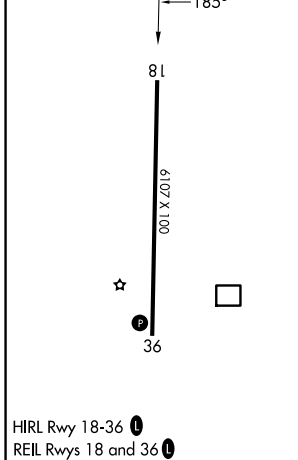
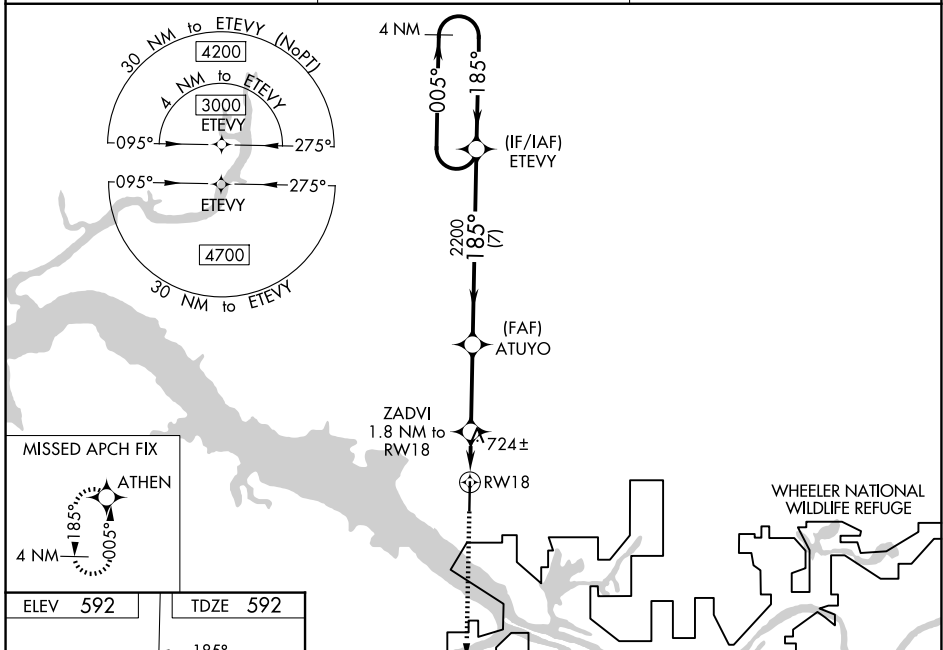
# RNAV (GPS) RWY 18

PRYOR FLD RGNL (DCU)

**⚠** DME/DME RNP-0.3 NA. When local altimeter setting not received, use Huntsville Intl-Carl T Jones Fld altimeter setting: increase LPV DA to 817 and LNAV/VNAV DA to 920 and all visibilities ½ mile. Increase all MDA 40 feet and LNAV Cat C and D visibility ⅓ mile. VDP and Baro-VNAV NA when using Huntsville Intl-Carl T Jones Fld altimeter setting. For uncompensated Baro-VNAV systems, LNAV/VNAV NA below -11°C (13°F) or above 54°C (130°F).

MISSED APPROACH: Climb to 3000 direct ATHEN and hold.

|                        |  |                                   |
|------------------------|--|-----------------------------------|
| ASOS<br><b>118.375</b> | HUNTSVILLE APP CON*<br><b>118.05 239.0</b> | UNICOM<br><b>123.075 (CTAF) 0</b> |
|------------------------|--|-----------------------------------|



| CATEGORY     | A                     | B                     | C                       | D                       |
|--------------|-----------------------|-----------------------|-------------------------|-------------------------|
| LPV DA       |                       | 792-¾                 | 200 (200-¾)             |                         |
| LNAV/VNAV DA |                       | 895-1                 | 303 (400-1)             |                         |
| LNAV MDA     | 980-1                 | 388 (400-1)           | 980-1⅛                  | 388 (400-1⅛)            |
| CIRCLING     | 1040-1<br>448 (500-1) | 1060-1<br>468 (500-1) | 1340-2¼<br>748 (800-2¼) | 1340-2½<br>748 (800-2½) |

SE-4, 11 JUN 2026 to 09 JUL 2026

SE-4, 11 JUN 2026 to 09 JUL 2026