



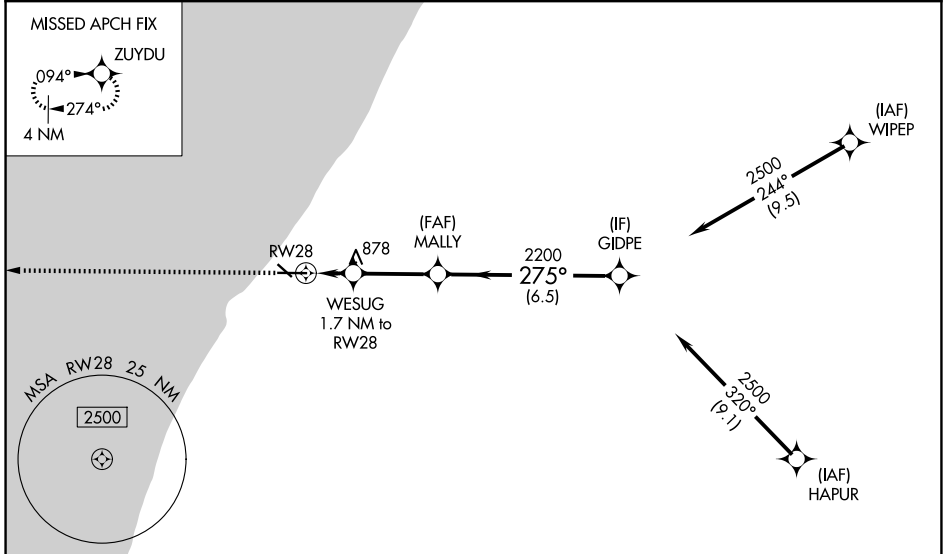
WAAS CH <b>45822</b> <b>W28A</b>	APP CRS <b>275°</b>	Rwy Ldg TDZE Apt Elev	<b>6006</b> <b>649</b> <b>649</b>
--	------------------------	-----------------------------	---

# RNAV (GPS) RWY 28

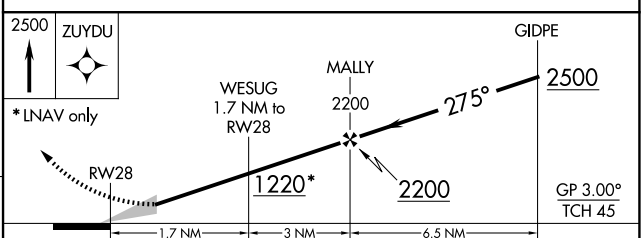
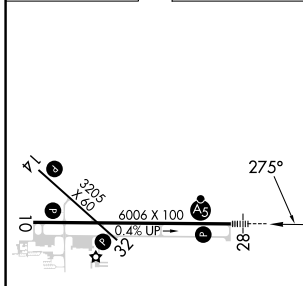
SOUTHWEST MICHIGAN RGNL (BEH)

<p>RNP APCH.</p> <p></p> <p>For uncompensated Baro-VNAV systems, LNAV/VNAV NA below -19°C (-2°F) or above 39°C (102°F). Circling Rwy 14, 32 NA at night.</p>		<p>MALS R</p> 	<p>MISSED APPROACH: Climb to 2500 direct ZUYDU and hold.</p>
---	--	---	--

ASOS <b>121.55</b>	SOUTH BEND APP CON* <b>118.55 257.8</b>	CLNC DEL <b>119.7</b>	UNICOM <b>123.0 (CTAF) 0</b>
-----------------------	--	--------------------------	---------------------------------



ELEV <b>649</b>	TDZE <b>649</b>
-----------------	-----------------



CATEGORY	A	B	C	D
LPV DA		849-½	200 (200-½)	
LNAV/VNAV DA		941-½	292 (300-½)	
LNAV MDA	1140-½	491 (500-½)	1140-1	491 (500-1)
CIRCLING	1140-1 491 (500-1)	1160-1 511 (600-1)	1300-1¾ 651 (700-1¾)	1340-2 691 (700-2)

REIL Rws 10, 14 and 32 0  
MIRL Rwy 14-32 0  
HIRL Rwy 10-28 0

EC-1, 11 JUN 2026 to 09 JUL 2026

EC-1, 11 JUN 2026 to 09 JUL 2026