

# TACAN Y RWY 23

TACAN NRB Chan <b>51</b>	APCH CRS <b>221°</b>	Rwy Ldg TDZE 8001 15 15 Arpt Elev
-----------------------------	-------------------------	---

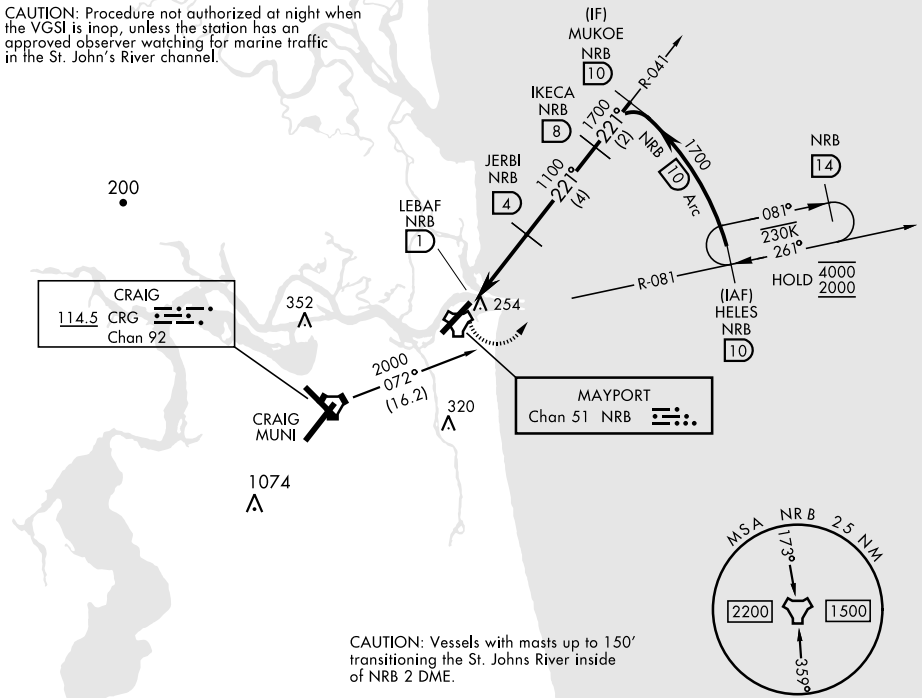
[USN] MAYPORT NS (ADM DAVID L. MC DONALD FLD) (KNRB)

▼ Visibility reduction by helicopters not authorized. MISSED APPROACH: Climbing left turn to 2000 via NRB TACAN R-081 to HELES and hold.

ATIS ★ <b>236.775</b>	JACKSONVILLE APP CON <b>124.9 308.4</b>	TOWER ★ <b>118.75 239.30</b>	GND CON <b>126.5 233.7</b>	ASR/PAR
--------------------------	--	---------------------------------	-------------------------------	---------

CRG feeder route requires turn in hold.

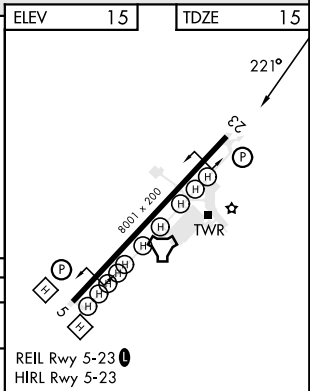
CAUTION: Procedure not authorized at night when the VGSI is inop, unless the station has an approved observer watching for marine traffic in the St. John's River channel.



CAUTION: Vessels with masts up to 150' transiting the St. Johns River inside of NRB 2 DME.

EMERG SAFE ALT 100 NM 2800

2000 NRB R-081	HELES NRB 10	JERBI NRB 4	IKECA NRB 8	MUKOKE NRB 10
NRB TACAN		LEBAF NRB 1	1100	1700
3.01° TCH 48		3 NM	1700	1700
CATEGORY	A	B	C	D
S-23	520-1	505 (600-1)	520-1½ 505 (600-1½)	
CIRCLING	560-1	545 (600-1)	560-1½ 545 (600-1½)	620-2 605 (700-2)



# TACAN Y RWY 23

SE-3, 11 JUN 2026 to 09 JUL 2026

SE-3, 11 JUN 2026 to 09 JUL 2026