

# TACAN Y RWY 5

TACAN NRB Chan <b>51</b>	APCH CRS <b>055°</b>	Rwy Ldg TDZE Arpt Elev	<b>8001</b> <b>12</b> <b>15</b>
-----------------------------	-------------------------	------------------------------	---------------------------------------

[USN] MAYPORT NS (ADM DAVID L. MC DONALD FLD) (KNRB)

**▽** MISSED APPROACH: Climb to 500. Then climbing right turn to 3000 via NRB TACAN R-081 to BENG and hold, continue climb in hold to 3000.

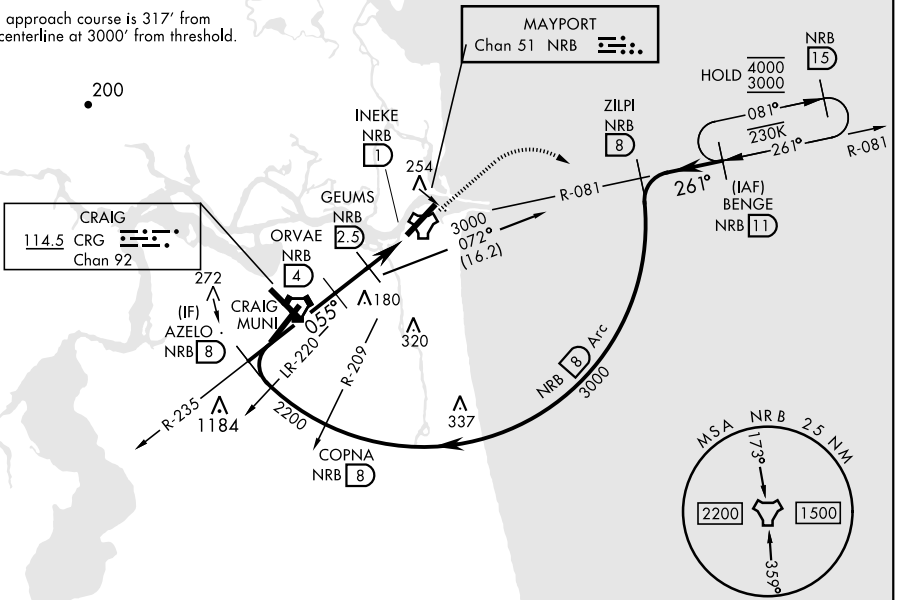
ATIS ★ <b>236.775</b>	JACKSONVILLE APP CON <b>124.9 308.4</b>	TOWER ★ <b>118.75 239.30</b>	GND CON <b>126.5 233.7</b>	ASR/PAR
--------------------------	--	---------------------------------	-------------------------------	---------

CAUTION: Circling not authorized to Rwy 23 at night when VGS1 inop on Rwy 23, unless the station has an approved observer watching for marine traffic in the St. John's River channel.

CAUTION: Intmed seg len 4 NM.

CRG feeder requires turn in hold.

Final approach course is 317' from rwy centerline at 3000' from threshold.



SE-3, 11 JUN 2026 to 09 JUL 2026

SE-3, 11 JUN 2026 to 09 JUL 2026

EMERG SAFE ALT 100 NM 2800

	ELEV 15		TDZE 12	
CATEGORY	A	B	C	D
S-5	440-1	428 (500-1)	440-1¼ 428 (500-1¼)	
CIRCLING	560-1	545 (600-1)	560-1½ 545 (600-1½)	620-2 605 (700-2)

# TACAN Y RWY 5

REIL Rwy 5-23  
HIRL Rwy 5-23