

WAAS CH 50140 W28A	APP CRS 284°	Rwy Ldg TDZE Apt Elev	4898 1603 1603
--	------------------------	-----------------------------	---

RNAV (GPS) RWY 28

HAZLETON RGNL (HZL)

RNP APCH.

▼ Rwy 28 helicopter visibility reduction below 3/4 SM NA. Inop table does not apply to LPV all Cats and LNAV Cats A/B. For uncompensated Baro-VNAV systems, LNAV/VNAV NA below -18°C or above 54°C.

MALS



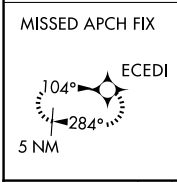
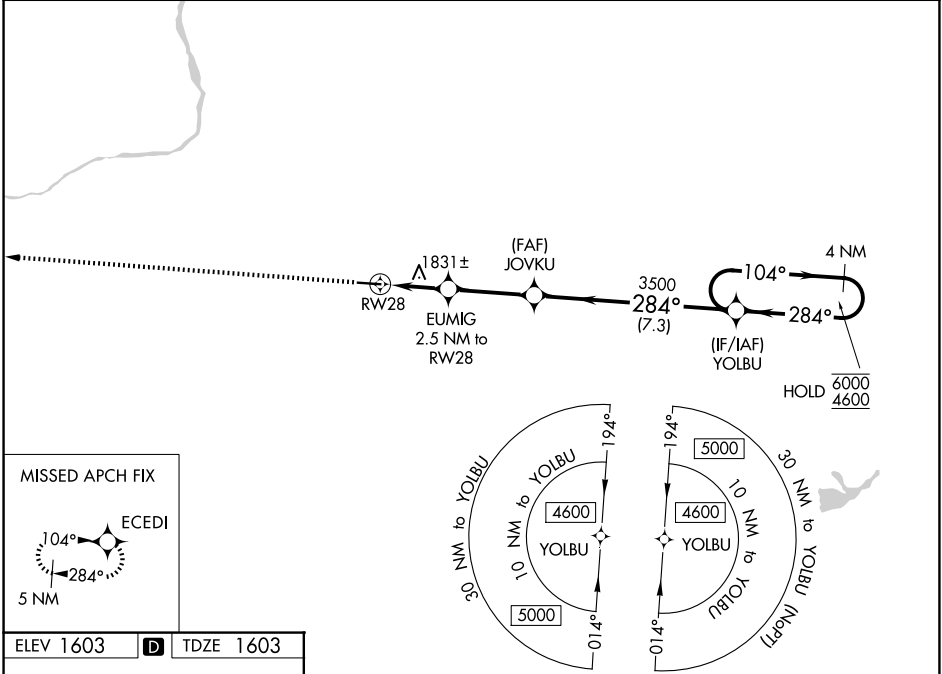
MISSED APPROACH:
Climb to 4400 direct ECEDI and hold.

AWOS-3
119.975

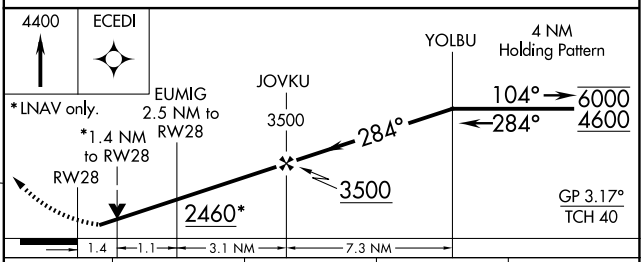
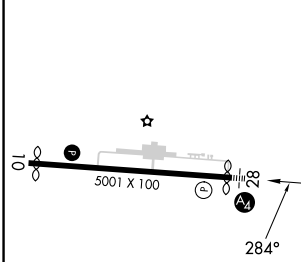
WILKES-BARRE APP CON
126.3 256.7

CLNC DEL
121.7

UNICOM
123.0 (CTAF) 0



ELEV 1603 **D** TDZE 1603



CATEGORY	A	B	C	D
LPV DA	1978-1		375 (400-1)	
LNAV/VNAV DA	2143-1 1/4		540 (600-1 1/4)	
LNAV MDA	2100-1	497 (500-1)	2100-1 1/8	497 (500-1 1/8)
CIRCLING	2140-1 537 (600-1)	2400-1 797 (800-1)	2480-2 1/2 877 (900-2 1/2)	2520-3 917 (1000-3)

REIL Rwy 10 **0**
MIRL Rwy 10-28 **0**

NE-4, 11 JUN 2026 to 09 JUL 2026

NE-4, 11 JUN 2026 to 09 JUL 2026