

WAAS CH <b>78003</b> W35A	APP CRS <b>353°</b>	Rwy Ldg TDZE <b>177</b> Apt Elev <b>234</b>	<b>11759</b>
---------------------------------	------------------------	---	--------------

# RNAV (GPS) RWY 35

PLATTSBURGH INTL (PBG)

**⚠** For uncompensated Baro-VNAV systems, LNAV/VNAV NA below -18°C (0°F) or above 54°C (130°F). DME/DME RNP-0.3 NA. For inop MALS/R, increase LPV and LNAV/VNAV all Cats visibility to ¾ mile. For inop MALS/R when using Burlington altimeter setting, increase LPV and LNAV/VNAV all Cats visibility to 1 mile. When local altimeter setting not received, use Burlington altimeter setting and increase all DA 54 feet and all MDA 60 feet; increase LPV and LNAV/VNAV all Cats visibility to ¾ mile, LNAV Cats C, D visibility to 1¼ mile, and increase Circling Cats C/D visibility ¼ mile. VDP and Baro-VNAV NA when using Burlington Intl altimeter setting.

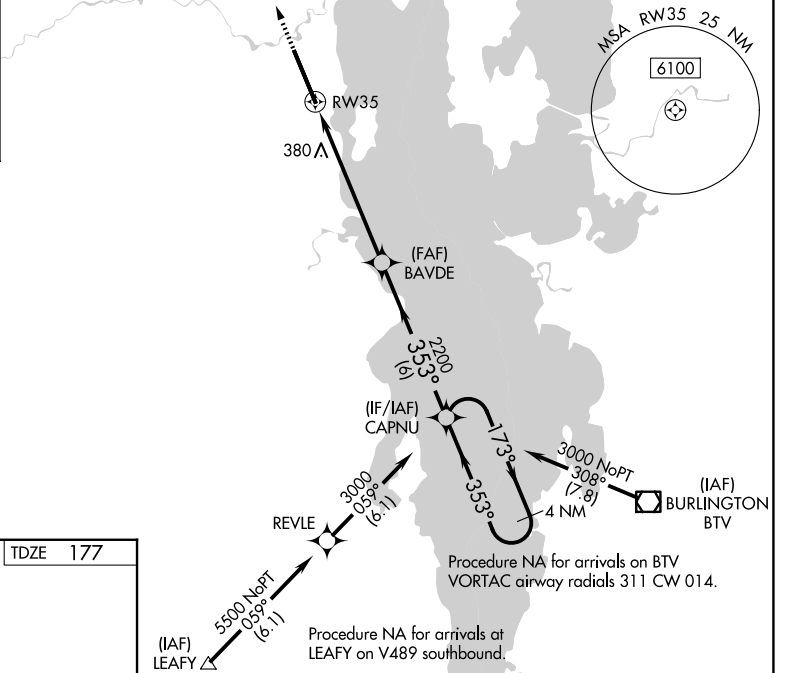
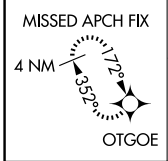
**MALS/R**

**MISSED APPROACH:**  
Climb to 3500 direct OTG/OE and hold, continue climb-in-hold to 3500.

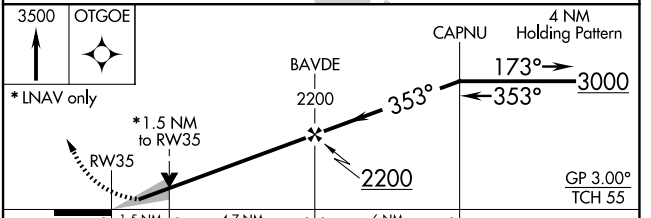
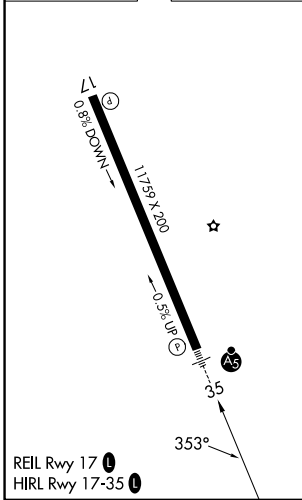
ASOS  
**132.225**

BURLINGTON APP CON \*  
**121.1 278.8**

UNICOM  
**122.7 (CTAF) 0**



ELEV 234 **D** TDZE 177



CATEGORY	A	B	C	D
LPV DA	427-½ 250 (200-½)			
LNAV/VNAV DA	434-½ 257 (200-½)			
LNAV MDA	700-½	523 (500-½)	700-1	523 (500-1)
CIRCLING	720-1 486 (600-1)	740-1 506 (600-1)	800-1½ 566 (700-1½)	960-2¼ 726 (800-2¼)

NE-2, 11 JUN 2026 to 09 JUL 2026

NE-2, 11 JUN 2026 to 09 JUL 2026