

LOC I-OSH 110.5	APP CRS 184°	Rwy Ldg TDZE Apt Elev	8002 794 809
---------------------------	------------------------	-----------------------------	---

LOC BC RWY 18

WITTMAN RGNL (OSH)

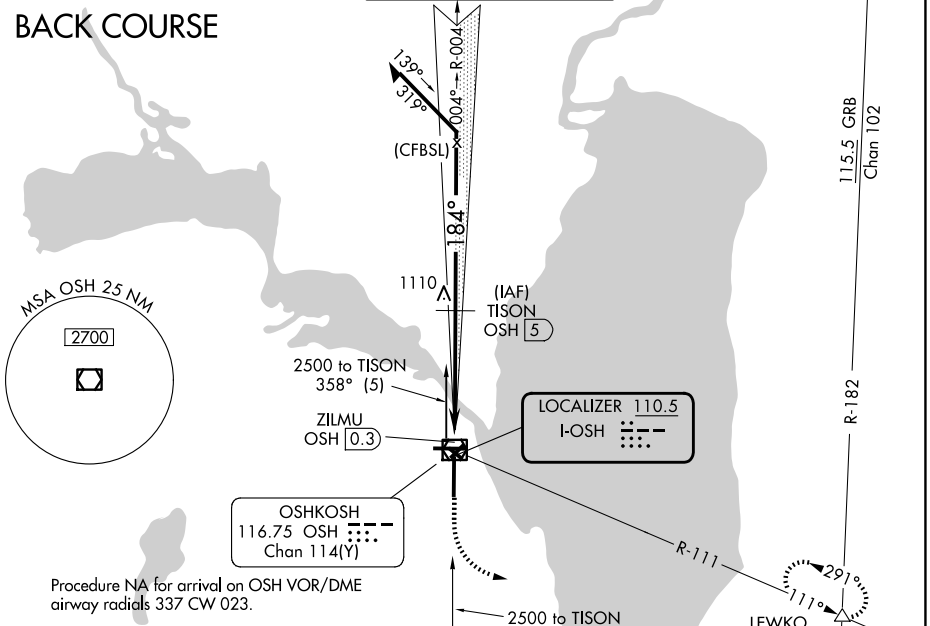
DME required.

▼ DME from OSH VOR/DME. DME use requires simultaneous reception of I-OSH and OSH DME. Circling Rwy 5, 13, 23, 31 NA at night. VDP NA when using FLD altimeter setting. When local altimeter setting not received, use FLD altimeter setting and increase all MDAs 40 feet; increase S-18 and Circling Cats C and D visibility ¼ SM.

MISSED APPROACH: Climb to 1300 then climbing left turn to 3000 on OSH R-111 to LEWKO INT/OSH 15.1 DME and hold.

ATIS 125.9	MILWAUKEE APP CON 127.0 263.075	OSHKOSH TOWER ★ 118.5 (CTAF) 0 290.9	GND CON 132.3	UNICOM 122.95
----------------------	---	--	-------------------------	-------------------------

BACK COURSE

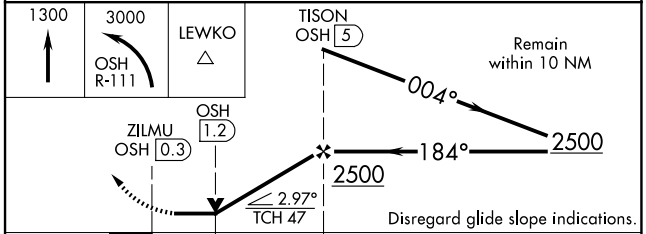
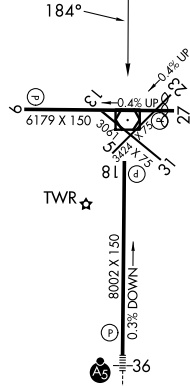


Procedure NA for arrival on OSH VOR/DME airway radials 337 CW 023.

EC-3, 11 JUN 2026 to 09 JUL 2026

EC-3, 11 JUN 2026 to 09 JUL 2026

ELEV 809	D	TDZE 794
-----------------	----------	-----------------



CATEGORY	A	B	C	D
S-18	1300-1	506 (500-1)	1300-1 $\frac{3}{8}$	506 (500-1 $\frac{3}{8}$)
CIRCLING	1300-1	491 (500-1)	1360-1 $\frac{1}{2}$ 551 (600-1 $\frac{1}{2}$)	1440-2 631 (700-2)

REIL Rws 18 and 27
HIRL Rws 9-27 and 18-36