

WAAS CH 58333 W18A	APP CRS 184°	Rwy Ldg TDZE 794 Apt Elev 809
--	------------------------	---

RNAV (GPS) RWY 18

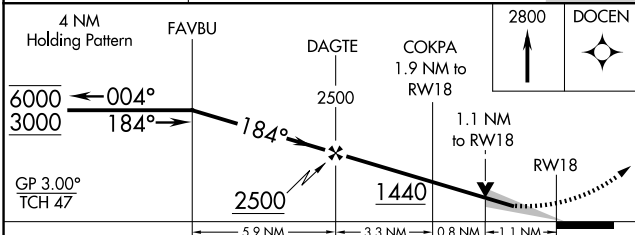
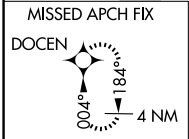
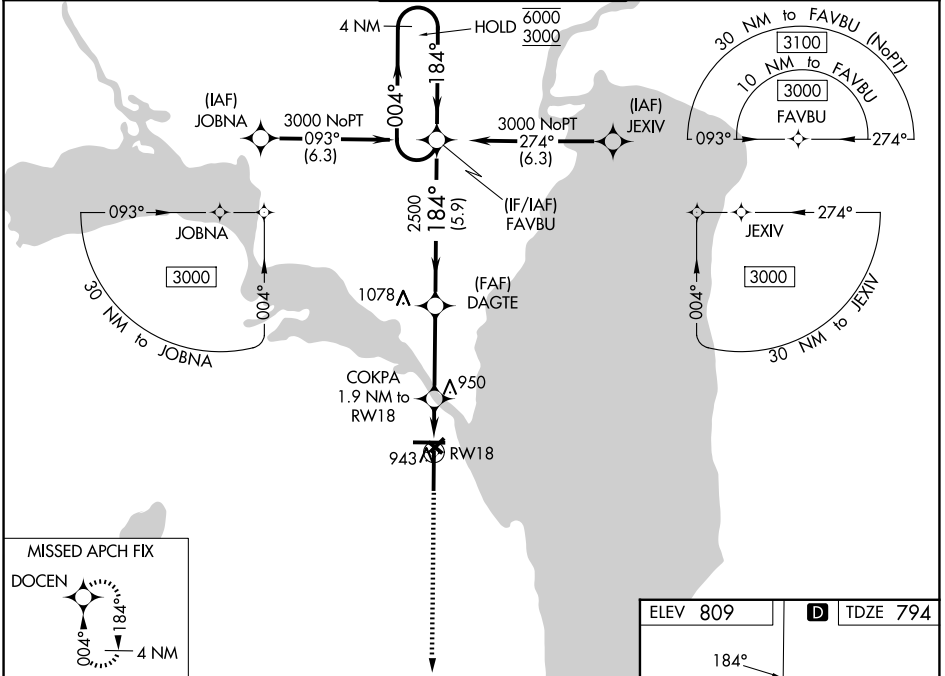
WITTMAN RGNL (OSH)

RNP APCH - GPS.

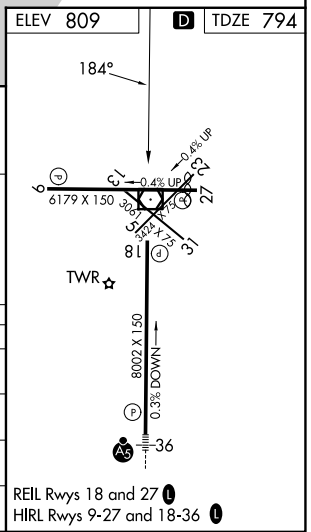
⚠ For uncompensated Baro-VNAV systems, LNAV/VNAV NA below -21°C or above 54°C. Baro-VNAV and VDP NA when using FLD altimeter setting. Circling Rwy 5, 13, 23, 31 NA at night. When local altimeter setting not received, use FLD altimeter setting and increase LPV DA to 1077 feet, LNAV/VNAV DA to 1155 feet, and all MDAs 40 feet; increase LPV visibility all Cats 1/8 SM, LNAV visibility Cats C and D 1/4 SM, and Circling visibility Cat D 1/4 SM.

MISSED APPROACH:
Climb to 2800 direct
DOCEN and hold.

ATIS 125.9	MILWAUKEE APP CON 127.0 263.075	OSHKOSH TOWER ★ 118.5 (CTAF) 290.9	GND CON 132.3	UNICOM 122.95
----------------------	---	--	-------------------------	-------------------------



CATEGORY	A	B	C	D
LPV DA		1044-3/4	250 (300-3/4)	
LNAV/ VNAV DA		1122-1	328 (400-1)	
LNAV MDA	1200-1	406 (400-1)	1200-1/8	406 (400-1/8)
CIRCLING	1280-1 471 (500-1)	1300-1 491 (500-1)	1360-1/2 551 (600-1/2)	1440-2 631 (700-2)



EC-3, 11 JUN 2026 to 09 JUL 2026

EC-3, 11 JUN 2026 to 09 JUL 2026