

WAAS CH 93534 W27A	APP CRS 274°	Rwy Ldg TDZE 786 Apt Elev 809	5648
--	------------------------	---	-------------

RNAV (GPS) RWY 27

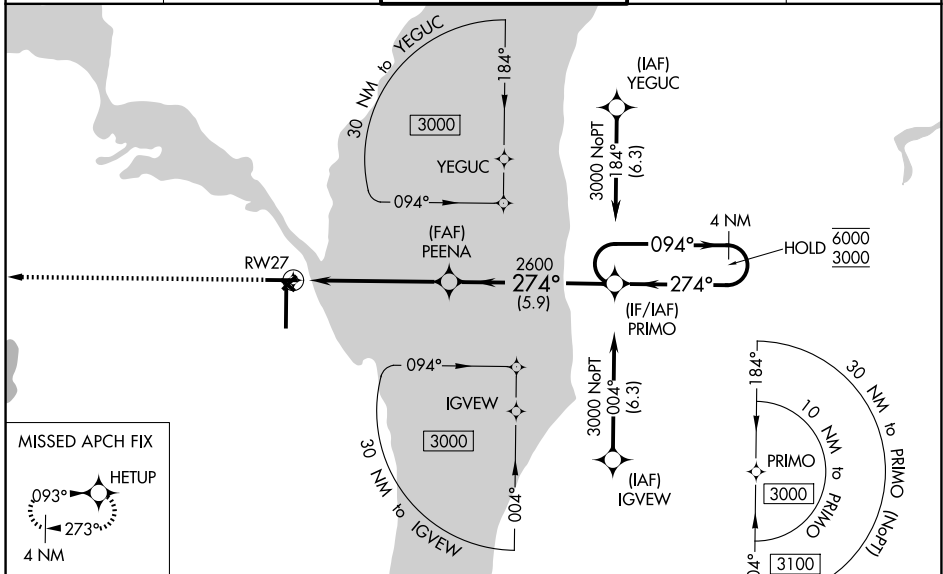
WITTMAN RGNL (OSH)

RNP APCH - GPS.

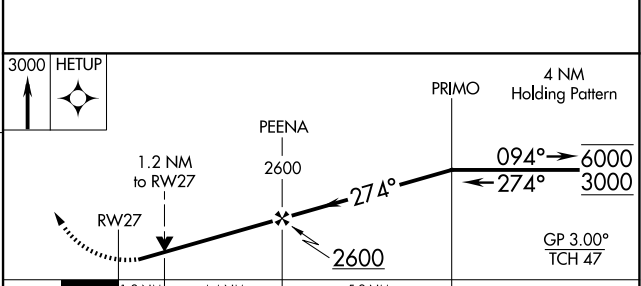
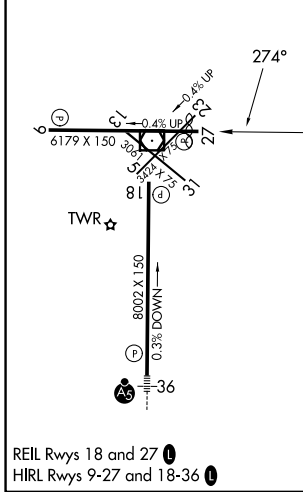
▼ For uncompensated Baro-VNAV systems, LNAV/VNAV NA below -22°C or above 54°C. Rwy 27 helicopter visibility reduction below 3/4 SM NA. Circling Rwy 5, 13, 23, 31 NA at night. Baro-VNAV and VDP NA when using FLD altimeter setting. When local altimeter setting not received, use FLD altimeter setting and increase LPV DA to 1069 feet, LNAV/VNAV DA to 1111 feet, and all MDAs 40 feet; increase LPV and LNAV/VNAV visibility all Cats 1/8 SM, LNAV visibility Cats C and D 1/4 SM, and Circling visibility Cat D 1/4 SM.

⚠ MISSED APPROACH:
Climb to 3000 direct HETUP and hold.

ATIS 125.9	MILWAUKEE APP CON 127.0 263.075	OSHKOSH TOWER ★ 118.5 (CTAF) 290.9	GND CON 132.3	UNICOM 122.95
----------------------	---	--	-------------------------	-------------------------



ELEV 809	D	TDZE 786
-----------------	----------	-----------------



CATEGORY	A	B	C	D
LPV DA		1036-3/4	250 (300-3/4)	
LNAV/VNAV DA		1078-7/8	292 (300-7/8)	
LNAV MDA	1200-1	414 (400-1)	1200-1 1/8	414 (400-1 1/8)
CIRCLING	1280-1 471 (500-1)	1300-1 491 (500-1)	1360-1 1/2 551 (600-1 1/2)	1440-2 631 (700-2)

EC-3, 11 JUN 2026 to 09 JUL 2026

EC-3, 11 JUN 2026 to 09 JUL 2026