

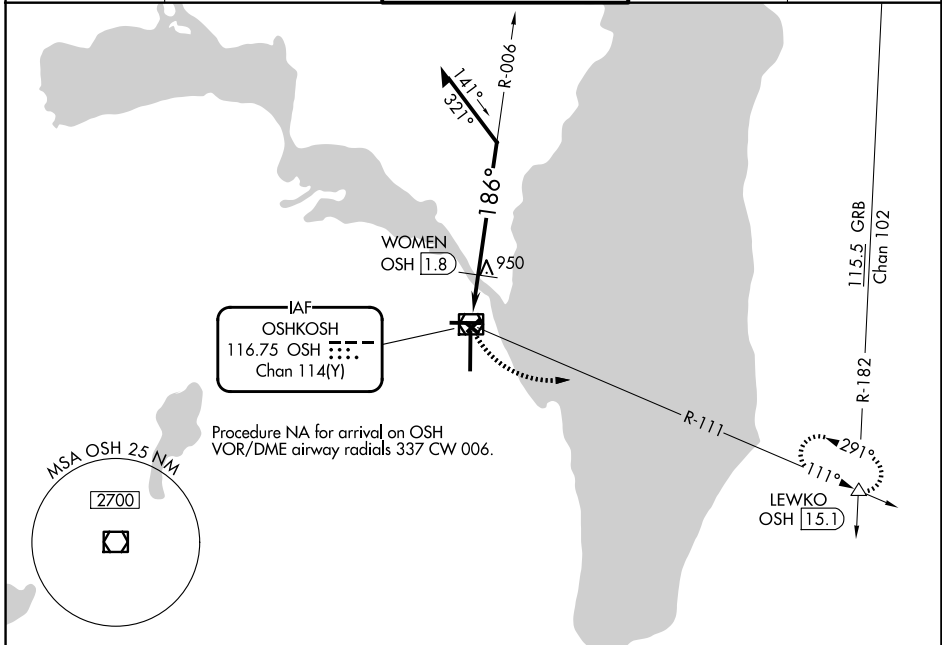
VOR/DME OSH <b>116.75</b> Chan <b>114 (Y)</b>	APP CRS <b>186°</b>	Rwy Ldg <b>8002</b> TDZE <b>794</b> Apt Elev <b>809</b>
---	------------------------	---

**VOR RWY 18**  
WITTMAN RGNL (OSH)

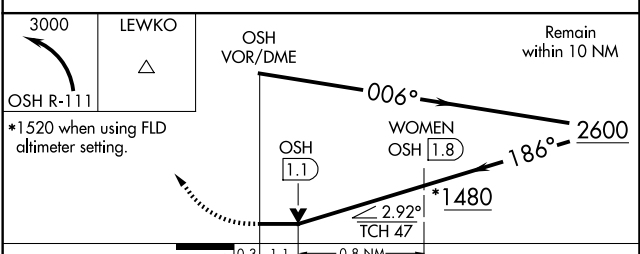
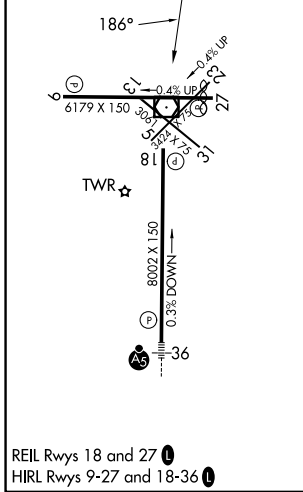
**⚠** Circling Rwy 5, 13, 23, 31 NA at night. VDP NA when using FLD altimeter setting. Rwy 18 helicopter visibility reduction below 3/4 SM NA. When local altimeter setting not received, use FLD altimeter setting and increase all MDAs 40 feet; increase WOMEN fix minimums Circling Cat D visibility 1/4 SM.

**⚠** MISSED APPROACH: Climbing left turn to 3000 on OSH VOR/DME R-111 to LEWKO INT/ OSH 15.1 DME and hold.

ATIS <b>125.9</b>	MILWAUKEE APP CON <b>127.0 263.075</b>	OSHKOSH TOWER ★ <b>118.5 (CTAF) 290.9</b>	GND CON <b>132.3</b>	UNICOM <b>122.95</b>
----------------------	---	--	-------------------------	-------------------------



ELEV 809	<b>D</b>	TDZE 794
----------	----------	----------



CATEGORY	A	B	C	D
S-18	1480-1	686 (700-1)	1480-2	686 (700-2)
CIRCLING	1480-1	671 (700-1)	1480-2 671 (700-2)	1480-2 1/4 671 (700-2 1/4)
<b>WOMEN FIX MINIMUMS</b>				
S-18	1260-1	466 (500-1)	1260-1 3/8	466 (500-1 3/8)
CIRCLING	1280-1 471 (500-1)	1300-1 491 (500-1)	1360-1 1/2 551 (600-1 1/2)	1440-2 631 (700-2)