

VOR/DME OSH 116.75 Chan 114 (Y)	APP CRS 265°	Rwy Ldg TDZE 786 Apt Elev 809
---	------------------------	---

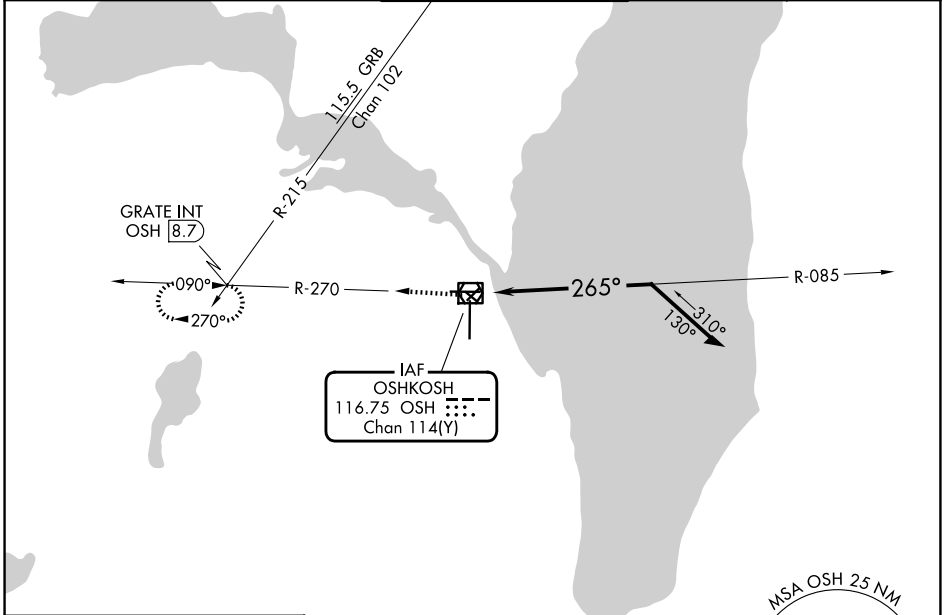
VOR RWY 27

WITTMAN RGNL (OSH)

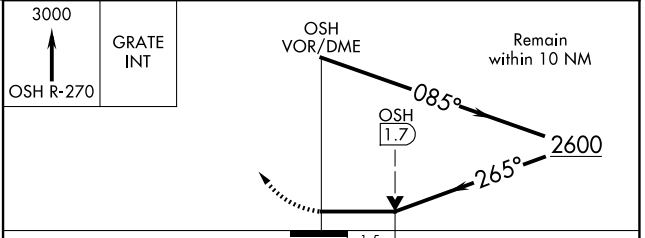
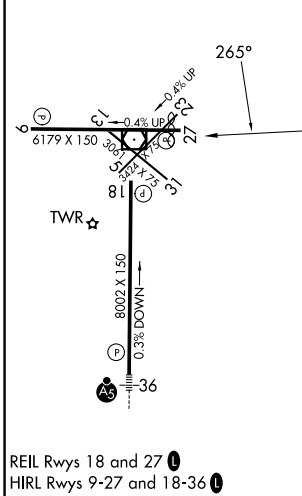
⚠ Circling Rwy 5, 13, 23, 31 NA at night. VDP NA when using FLD altimeter setting.
⚠ Rwy 27 helicopter visibility reduction below 3/4 SM NA. When local altimeter setting not received, use FLD altimeter setting and increase all MDAs 40 feet; increase S-27 and Circling visibility Cats C and D 1/4 SM.

MISSED APPROACH: Climb to 3000 on OSH VOR/DME R-270 to GRATE INT/OSH 8.7 DME and hold.

ATIS 125.9	MILWAUKEE APP CON 127.0 263.075	OSHKOSH TOWER ★ 118.5 (CTAF) 290.9	GND CON 132.3	UNICOM 122.95
----------------------	---	--	-------------------------	-------------------------



ELEV 809	D	TDZE 786
-----------------	----------	-----------------



CATEGORY	A	B	C	D
S-27	1300-1	514 (500-1)	1300-1 3/8	514 (500-1 3/8)
CIRCLING	1300-1	491 (500-1)	1360-1 1/2 551 (600-1 1/2)	1440-2 631 (700-2)

EC-3, 11 JUN 2026 to 09 JUL 2026

EC-3, 11 JUN 2026 to 09 JUL 2026