

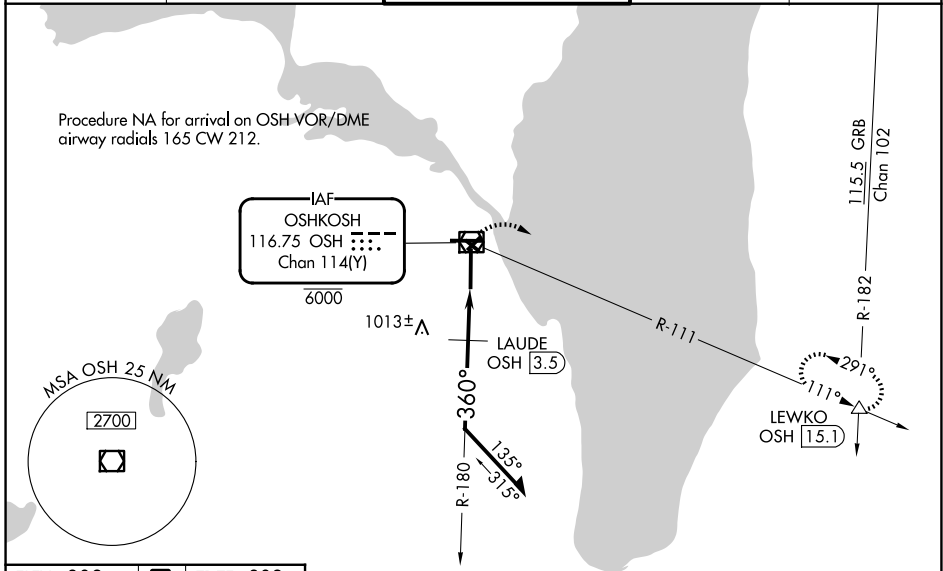
VOR/DME OSH 116.75 Chan 114 (Y)	APP CRS 360°	Rwy Ldg TDZE Apt Elev	8002 809 809
---	------------------------	-----------------------------	---

VOR RWY 36

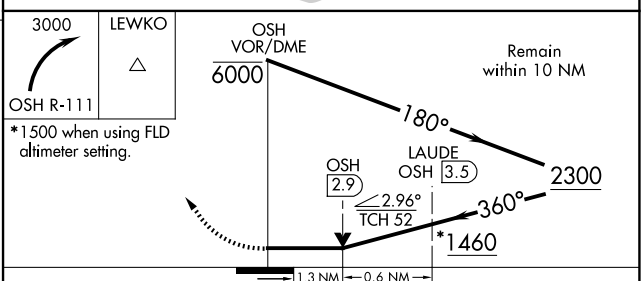
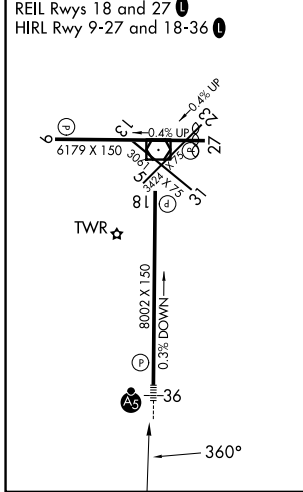
WITTMAN RGNL (OSH)

<p>⚠ Circling to Rwy 5, 13, 23, 31 NA at night. When local altimeter setting not received, use FLD altimeter setting and increase all MDAs 40 feet and S-36 visibility Cats C and D 1/2 SM. LAUDE fix minimums: increase S-36 visibility Cats C and D to RVR 5500. For inop ALS, increase LAUDE fix minimums S-36 Cats C and D visibility to 1/2 SM. VDP NA with FLD altimeter setting.</p>	<p>MALSR</p>	<p>MISSED APPROACH: Climbing right turn to 3000 on OSH VOR/DME R-111 to LEWKO INT/ OSH 15.1 DME and hold.</p>

ATIS 125.9	MILWAUKEE APP CON 127.0 263.075	OSHKOSH TOWER ★ 118.5 (CTAF) 290.9	GND CON 132.3	UNICOM 122.95
----------------------	---	--	-------------------------	-------------------------



ELEV 809	D	TDZE 809
----------	----------	----------



CATEGORY	A	B	C	D
S-36	1460/24	651 (700-1/2)	1460-1 3/8	651 (700-1 3/8)
CIRCLING	1460-1	651 (700-1)	1460-1 7/8	1460-2
			651 (700-1 1/8)	651 (700-2)
LAUDE FIX MINIMUMS (DME REQUIRED)				
S-36	1280/24	471 (500-1/2)	1280/50	471 (500-1)
CIRCLING	1280-1	1300-1	1360-1 1/2	1440-2
	471 (500-1)	491 (500-1)	551 (600-1 1/2)	631 (700-2)

EC-3, 11 JUN 2026 to 09 JUL 2026

EC-3, 11 JUN 2026 to 09 JUL 2026