

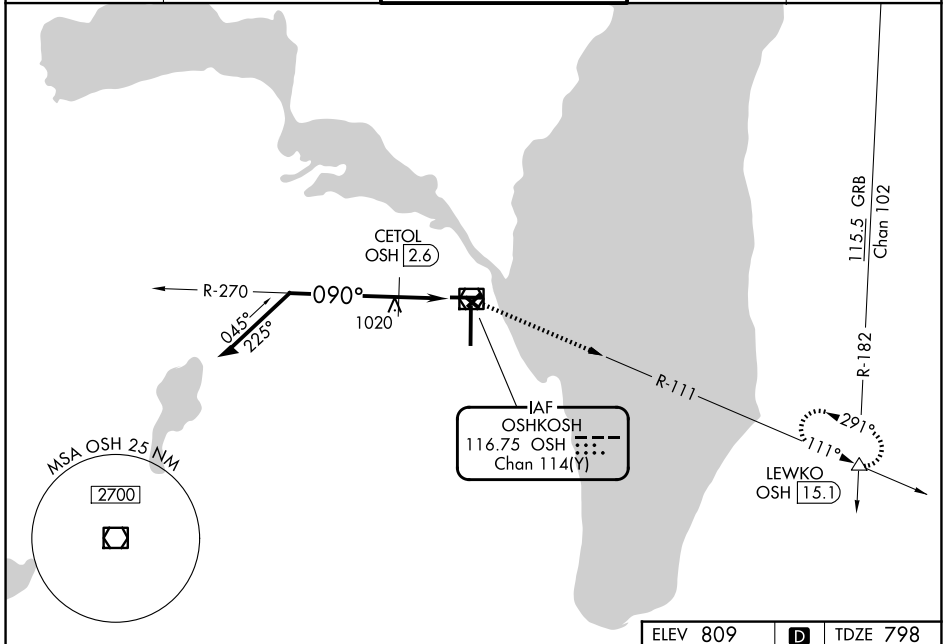
VOR/DME OSH 116.75 Chan 114 (Y)	APP CRS 090°	Rwy Ldg TDZE 798 Apt Elev 809
-----------------------------------------------------	------------------------	---------------------------------------------------

VOR RWY 9
WITTMAN RGNL (OSH)

⚠ Circling to Rwy 5, 13, 23, 31 NA at night. Rwy 9 helicopter visibility reduction below 3/4 SM NA. When local altimeter setting not received, use FLD altimeter setting and increase all MDAs 40 feet and S-9 visibility Cats C and D 1/2 SM. CETOL fix minimums: increase S-9 visibility Cats C and D 1/2 SM, and Circling Cat C and D 1/4 SM. VDP NA with FLD altimeter setting.

⚠ MISSED APPROACH: Climb to 3000 on OSH VOR/DME R-111 to LEWKO INT/OSH 15.1 DME and hold.

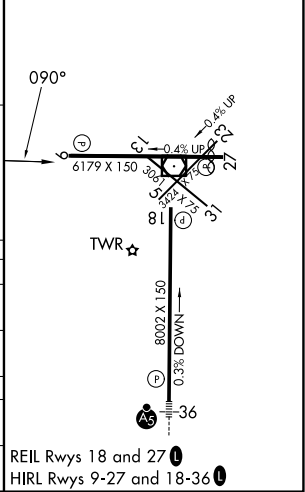
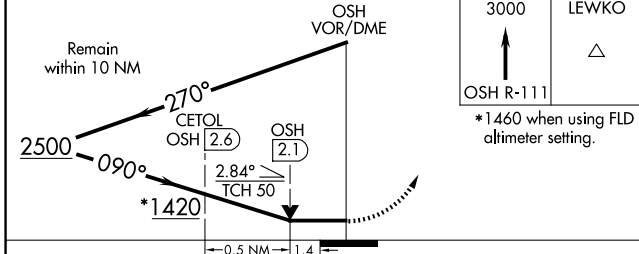
ATIS 125.9	MILWAUKEE APP CON 127.0 263.075	OSHKOSH TOWER ★ 118.5 (CTAF) 290.9	GND CON 132.3	UNICOM 122.95
----------------------	-------------------------------------------	----------------------------------------------	-------------------------	-------------------------



EC-3, 11 JUN 2026 to 09 JUL 2026

EC-3, 11 JUN 2026 to 09 JUL 2026

ELEV 809	D	TDZE 798
----------	----------	----------



CATEGORY	A	B	C	D
S-9	1420-1	622 (700-1)	1420-1 3/4	622 (700-1 3/4)
CIRCLING	1420-1	611 (700-1)	1420-1 3/4	1440-2 631 (700-2)
CETOL FIX MINIMUMS (DME REQUIRED)				
S-9	1280-1	482 (500-1)	1280-1 3/8	482 (500-1 3/8)
CIRCLING	1280-1 471 (500-1)	1300-1 491 (500-1)	1360-1 1/2 551 (600-1 1/2)	1440-2 631 (700-2)

REIL Rwy 18 and 27
HIRL Rwy 9-27 and 18-36