

JACKSONVILLE, NORTH CAROLINA

# RNAV (GPS) RWY 1

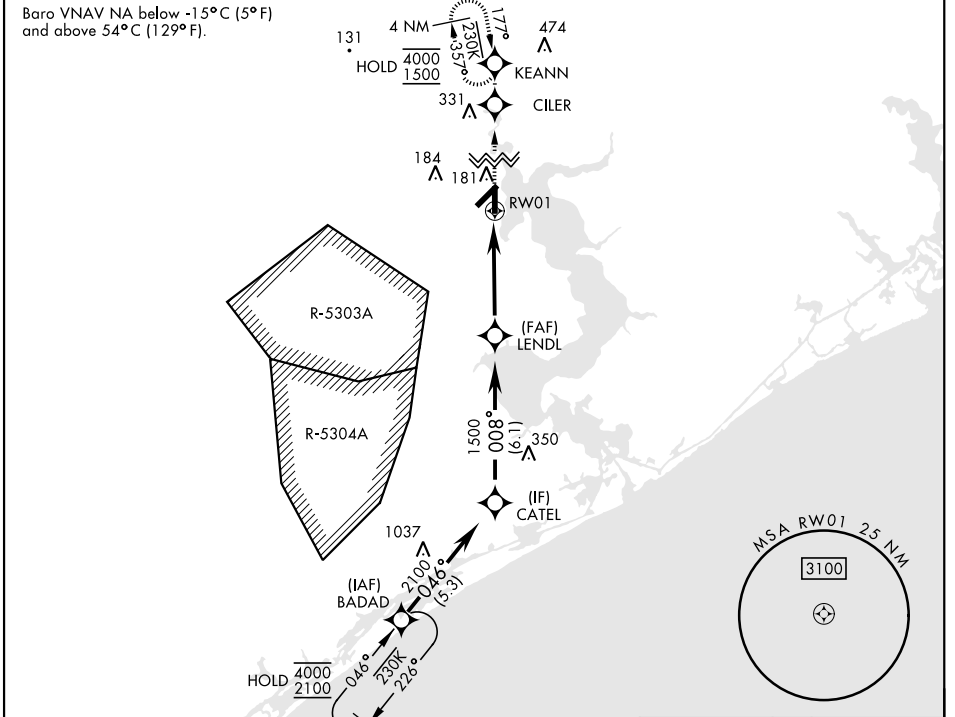
APCH CRS	Rwy ldg	4789
008°	THRE	24
	Arprt Elev	26

[USN] NEW RIVER MCAS (MCCUTCHEON FLD) (KNCA)

RNP APCH	SALSF 	MISSED APPROACH: Climb to 1500 direct CILER, 008° track to KEANN and hold.
RADAR required		

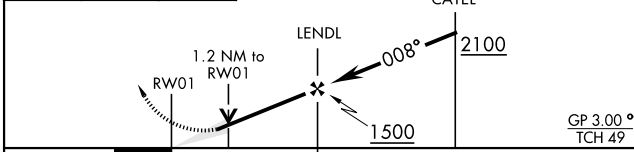
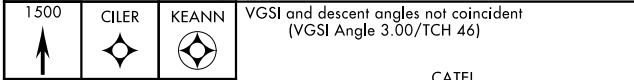
\*When ALS inop, increase vis to 7/8 mile.  
\*\*When ALS inop, increase vis CAT AB to 1 mile, CAT CD to 1 1/8 miles.

ATIS ★ <b>288.325</b>	CHERRY POINT APP CON <b>119.35 377.175</b>	TOWER ★ <b>134.95 (CTAF) 0★ 360.2</b>	GND CON <b>121.8 254.275</b>	ASR/PAR
--------------------------	---	--	---------------------------------	---------

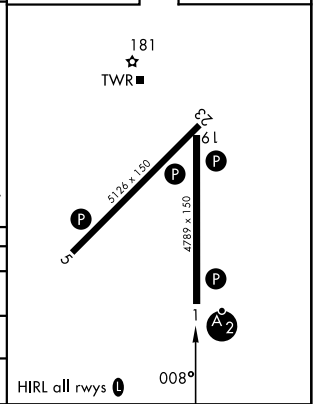


EMERG SAFE ALT 100 NM 3400

ELEV	26	THRE	24
------	----	------	----



CATEGORY	A	B	C	D
LNVA/ VNAV DA *	311-3/4 287 (300-3/4)	322-3/4 298 (300-3/4)	330-3/4 306 (400-3/4)	341-3/4 317 (400-3/4)
LNVA MDA **	440-3/4 416 (500-3/4)	440-1 416 (500-1)	440-1 416 (500-1)	440-1 416 (500-1)
CIRCLING	500-1 474 (500-1)	500-1 474 (500-1)	700-2 674 (700-2)	700-2 1/4 674 (700-2 1/4)



JACKSONVILLE, NORTH CAROLINA 34° 43'N-77° 26'W NEW RIVER MCAS (MCCUTCHEON FLD) (KNCA)

Amdt 6 10JUL25

# RNAV (GPS) RWY 1

SE-2, 11 JUN 2026 to 09 JUL 2026

SE-2, 11 JUN 2026 to 09 JUL 2026