

JACKSONVILLE, NORTH CAROLINA

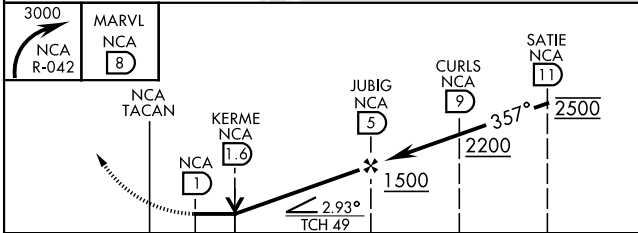
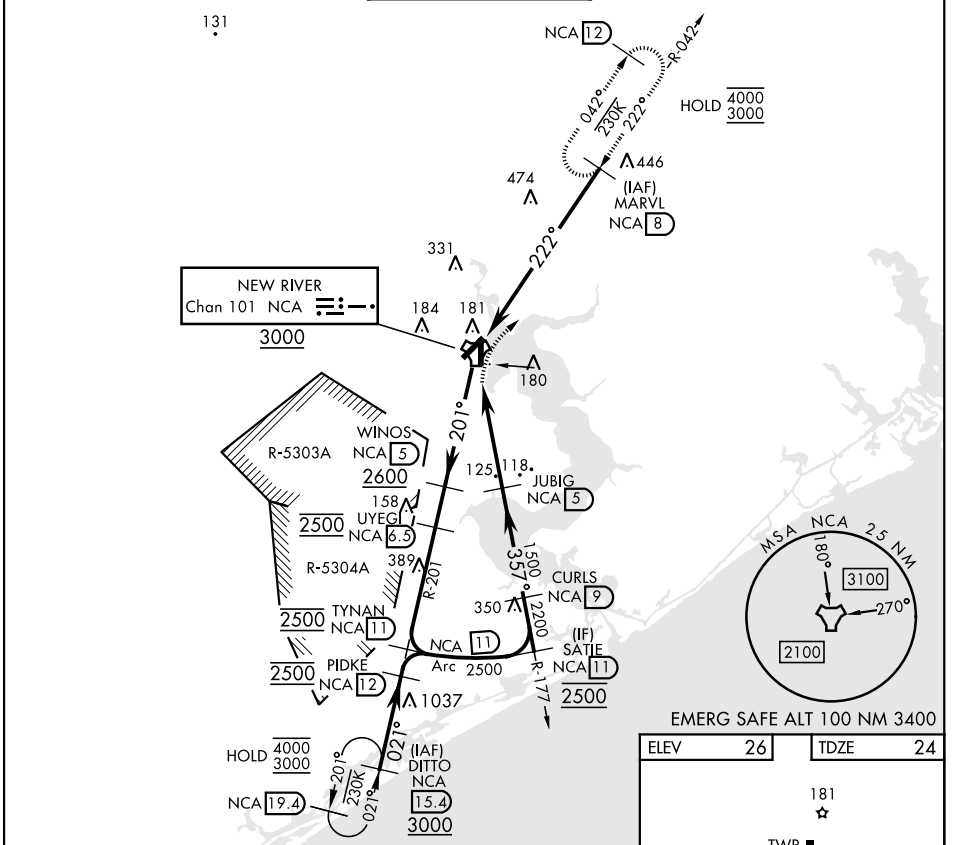
TACAN RWY 1

TACAN NCA Chan 101	APCH CRS 357°	Rwy ldg TDZE Arpt Elev	4789 24 26
------------------------------	-------------------------	------------------------------	---------------------------------------

[USN] NEW RIVER MCAS (MCCUTCHEON FLD) (KNCA)

RADAR required		SALSF	MISSED APPROACH: Climbing right turn to 3000 direct MARVL (NCA TACAN R-042/ 8 DME) and hold. Continue climb-in-hold to 3000.
* When ALS inop, increase vis CAT AB to 1 mile, CAT CD to 1½ miles.			

ATIS ★ 288.325	CHERRY POINT APP CON 119.35 377.175	TOWER ★ 134.95 (CTAF) 0★ 360.2	GND CON 121.8 254.275	ASR/PAR
--------------------------	---	--	---------------------------------	---------



ELEV	26	TDZE	24
------	----	------	----

TWR 181

5176 x 150

4789 x 150

357°

CATEGORY	A	B	C	D	HIRL all rwys
S-1*	440-¾	416 (500-¾)	440-1	416 (500-1)	
CIRCLING	500-1	474 (500-1)	700-2 674 (700-2)	700-2½ 674 (700-2½)	

JACKSONVILLE, NORTH CAROLINA 34° 43' N-77° 26' W NEW RIVER MCAS (MCCUTCHEON FLD) (KNCA)

Amtd 5 10JUL25

TACAN RWY 1

SE-2, 11 JUN 2026 to 09 JUL 2026

SE-2, 11 JUN 2026 to 09 JUL 2026