

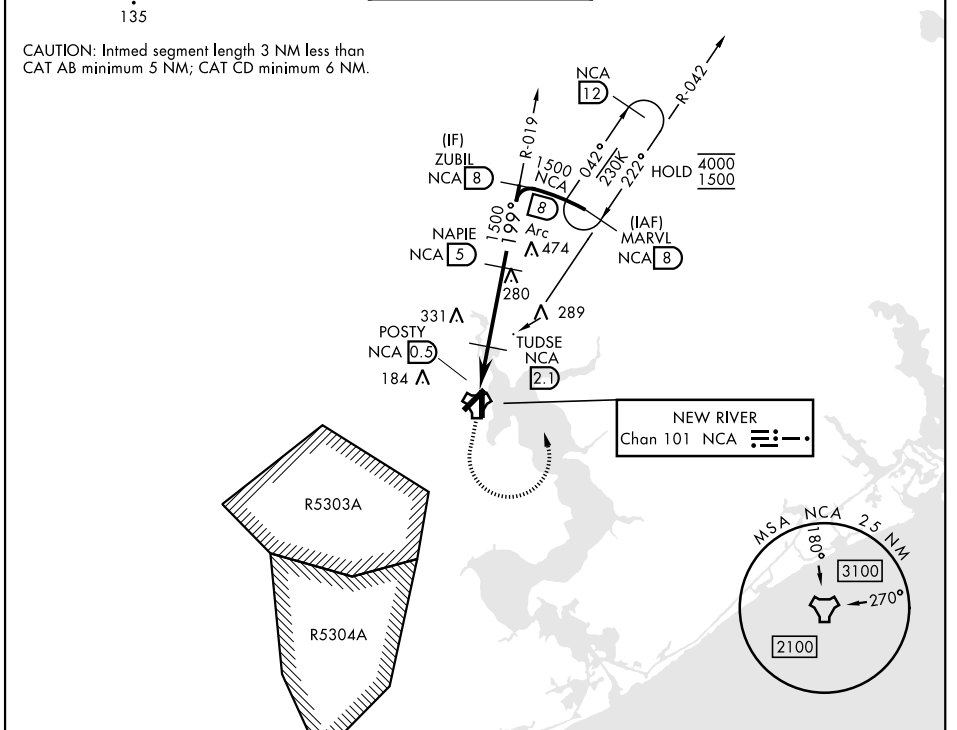
TACAN RWY 19

TACAN NCA Chan 101	APCH CRS 199°	Rwy Idg 4789 TDZE 23 Arpt Elev 26	[USN] NEW RIVER MCAS (MCCUTCHEON FLD) (KNCA)
-----------------------	------------------	--------------------------------------------------	----------------------------------------------

RADAR required

MISSED APPROACH: Climbing left turn to 1500 intercept NCA TACAN R-042 direct MARVL (R-042/8 DME) and hold.

ATIS ★ 288.325	CHERRY POINT APP CON 119.35 377.175	TOWER ★ 134.95 (CTAF) 0★ 360.2	GND CON 121.8 254.275	ASR/PAR
-------------------	----------------------------------------	-----------------------------------	--------------------------	---------



SE-2, 11 JUN 2026 to 09 JUL 2026

SE-2, 11 JUN 2026 to 09 JUL 2026

ELEV	26	TDZE	23
------	----	------	----

EMERG SAFE ALT 100 NM 3400

1500 NCA R-042 MARVL NCA (B) VGSI and descent angles not coincident (VGSI Angle 3.00/TCH 41).

CATEGORY	A		B		C		D	
S-19	440-1	417	(500-1)		440-1½	417	(500-1½)	
CIRCLING	500-1	474	(500-1)		700-2	674	(700-2)	700-2¼
						674	(700-2¼)	

HIRL all rwys 0

TACAN RWY 19