

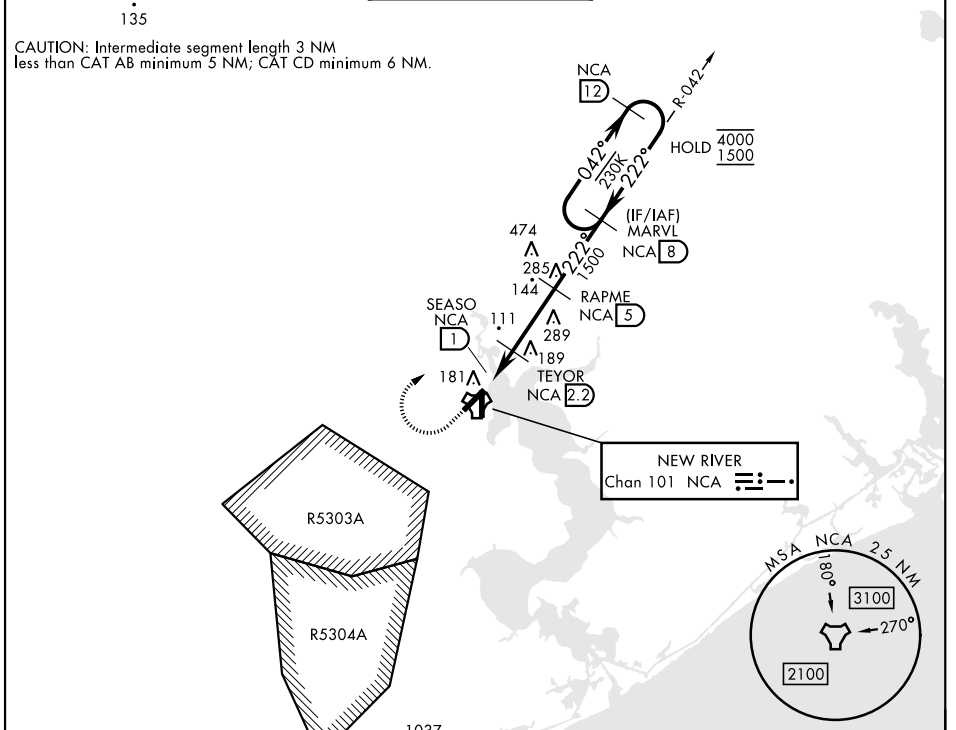
TACAN RWY 23

TACAN NCA Chan 101	APCH CRS 222°	Rwy Idg TDZE Arprt Elev 5125 24 26	[USN] NEW RIVER MCAS (MCCUTCHEON FLD) (KNCA)
------------------------------	-------------------------	--	--

RADAR required

MISSED APPROACH: Climb to 600 then climbing right turn to 1500, intercept NCA TACAN R-042 to MARVL and hold.

ATIS ★ 288.325	CHERRY POINT APP CON 119.35 377.175	TOWER ★ 134.95 (CTAF) 0★ 360.2	GND CON 121.8 254.275	ASR/PAR
--------------------------	---	---	---------------------------------	---------

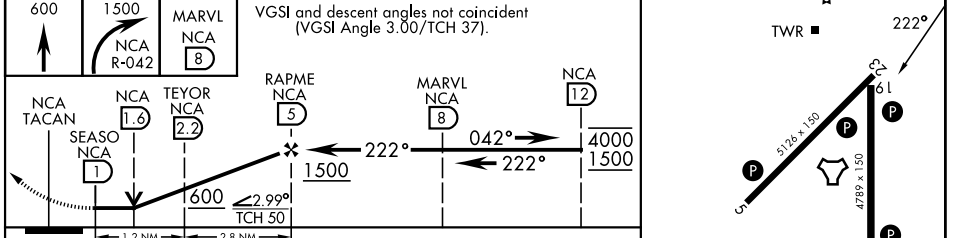


SE-2, 11 JUN 2026 to 09 JUL 2026

SE-2, 11 JUN 2026 to 09 JUL 2026

ELEV	26	TDZE	24
------	----	------	----

EMERG SAFE ALT 100 NM 3400



CATEGORY	A		B		C		D	
S-23	440-1	416	(500-1)		440-1 $\frac{1}{8}$	416	(500-1 $\frac{1}{8}$)	
CIRCLING	500-1	474	(500-1)		700-2 674 (700-2)		700-2 $\frac{1}{4}$ 674 (700-2 $\frac{1}{4}$)	

HIRL all rwys 1

TACAN RWY 23