

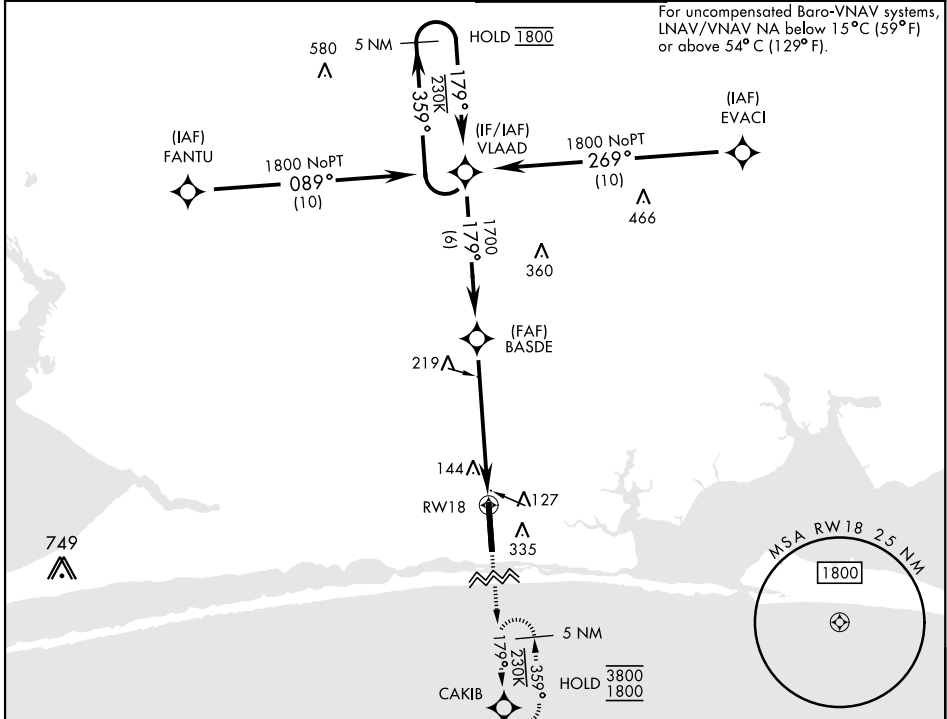
# RNAV (GPS) RWY 18

SBAS Chan <b>57304</b> <b>W18A</b>	APCH CRS <b>179°</b>	Rwy ldg <b>9600</b> TDZE <b>35</b> Arpt Elev <b>38</b>	[USAF]	HURLBURT FLD (KHRT)
--	-------------------------	--	--------	---------------------

RNP APCH ▼ *When ALS inop, increase vis to 1½ miles. **When ALS inop, increase CAT AB vis to 1 mile; CAT CDE vis to 1½ miles.	SALSF 	MISSED APPROACH: Climb to 1800 direct CAKIB and hold.
---	-----------	---

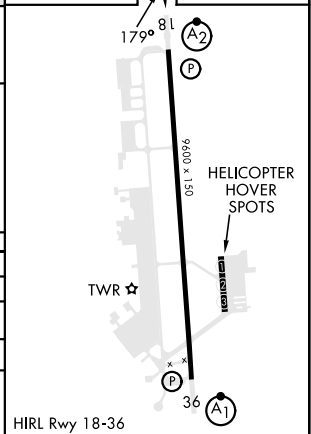
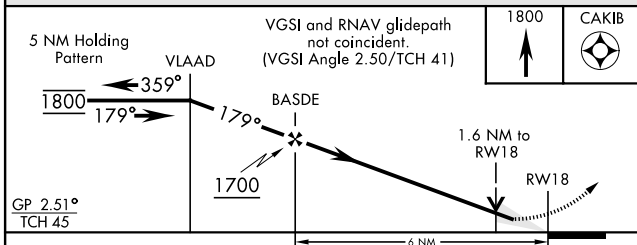
ATIS <b>134.475 360.675</b>	EGLIN APP CON <b>125.1 281.45</b> (271°- 089°) <b>132.1 360.6</b> (090°- 270°)	TOWER <b>126.5 351.675</b>	GND CON <b>123.975 275.8</b>
--------------------------------	--	-------------------------------	---------------------------------

For uncompensated Baro-VNAV systems, LNAV/VNAV NA below 15°C (59°F) or above 54°C (129°F).



EMERG SAFE ALT 100 NM 3700

ELEV	38	TDZE	35
------	----	------	----



CATEGORY	A	B	C	D	E
LPV DA	285-¾		250	(300-¾)	
LNAV/VNAV DA*	427-7/8		392	(400-7/8)	
LNAV MDA**	500-¾	465 (500-¾)	500-1/8	465	(500-1/8)
CIRCLING	640-1	602 (700-1)	640-1¾ 602 (700-1¾)	840-2½ 802 (900-2½)	840-2¾ 802 (900-2¾)

HIRL Rwy 18-36

# RNAV (GPS) RWY 18

SE-3, 11 JUN 2026 to 09 JUL 2026

SE-3, 11 JUN 2026 to 09 JUL 2026