

JACKSONVILLE, ARKANSAS

# RNAV (GPS) RWY 25

WAAS CH <b>67565</b> W25A	APCH CRS <b>252°</b>	Rwy ldg TDZE Arpt Elev	<b>12,001</b> <b>301</b> <b>312</b>
---------------------------------	-------------------------	------------------------------	---

(USAF)

LITTLE ROCK AFB (KLRF)

RNP APCH - GPS

ALSIF-2 MISSED APPROACH: Climb to 900 then climbing right then turn to 3000 direct HERCK and hold.

RADAR required

\*When ALS inop, increase RVR to 40, vis to 3/4 mile. When TDZL/CL inop, increase RVR to 24.  
\*\* When ALS inop, increase CAT AB RVR to 55, vis to 1 mile; CAT CD vis to 1 3/8 miles.

ATIS\*  
**119.175 251.1**

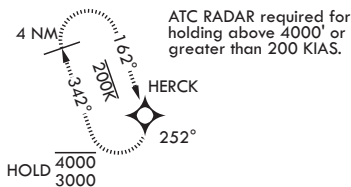
APP CON/DEP CON  
**119.5 306.2**

TOWER  
**120.6 269.075**

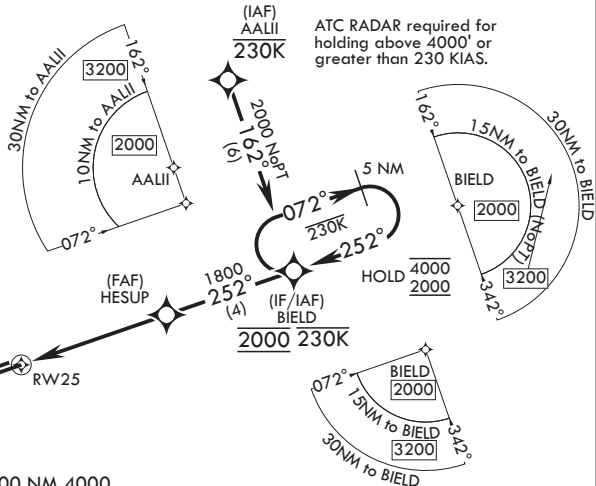
GND CON  
**132.8 275.8**

\*\*\* Circling not authorized S of Rwy 7-25.  
Circling not authorized to assault strip.

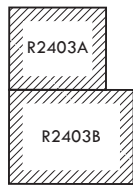
ALTERNATE MISSED APPROACH: Climbing to 3000, fly runway heading until 2 DME then right turn heading 360°, expect RADAR vectors from ATC.



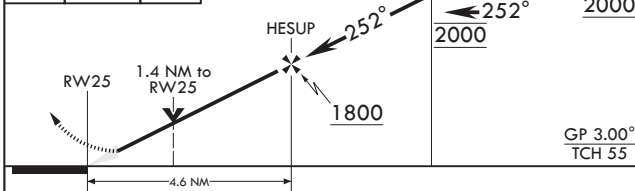
ATC RADAR required for holding above 4000' or greater than 200 KIAS.



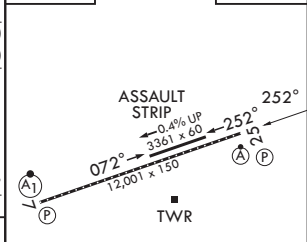
ATC RADAR required for holding above 4000' or greater than 230 KIAS.



EMERG SAFE ALT 100 NM 4000



ELEV 312 TDZE 301



CATEGORY	A	B	C	D
LPV DA*	501/18		200 (200-1/2)	
LNAV MDA**	780/24	479 (500-1/2)	780/50	479 (500-1)
CIRCLING***	780-1 468 (500-1)	880-1 568 (600-1)	880-1 1/2 568 (600-1 1/2)	1040-2 1/4 728 (800-2 1/4)

BCN  
TDZL/CL Rwy 25  
HIRL Rwy 7-25

JACKSONVILLE, ARKANSAS  
Amdt 1 27NOV25

34°55'N - 92°09'W

LITTLE ROCK AFB (KLRF)

# RNAV (GPS) RWY 25

SC-1, 11 JUN 2026 to 09 JUL 2026

SC-1, 11 JUN 2026 to 09 JUL 2026