

JACKSONVILLE, ARKANSAS

RNAV (GPS) RWY 7

WAAS CH 97202 W07A	APCH CRS 072°	Rwy ldg TDZE Arprt Elev	12,001 309 312
---------------------------------	-------------------------	----------------------------	---

(USAF)

LITTLE ROCK AFB (KLRF)

RNP APCH - GPS

ALSIF-1

MISSED APPROACH: Climb to 1000 then climb left turn to 3000 direct HERCK and hold.

- * When ALS inop, increase RVR to 40, vis to 3/4 mile.
- ** When ALS inop, increase vis to 1 3/8 miles.
- *** When ALS inop, increase CAT AB RVR to 55, vis to 1 mile; CAT CD vis to 1 7/8 miles.

ATIS* 119.175 251.1	APP CON/DEP CON 119.5 306.2	TOWER 120.6 269.075	GND CON 132.8 275.8
-------------------------------	---------------------------------------	-------------------------------	-------------------------------

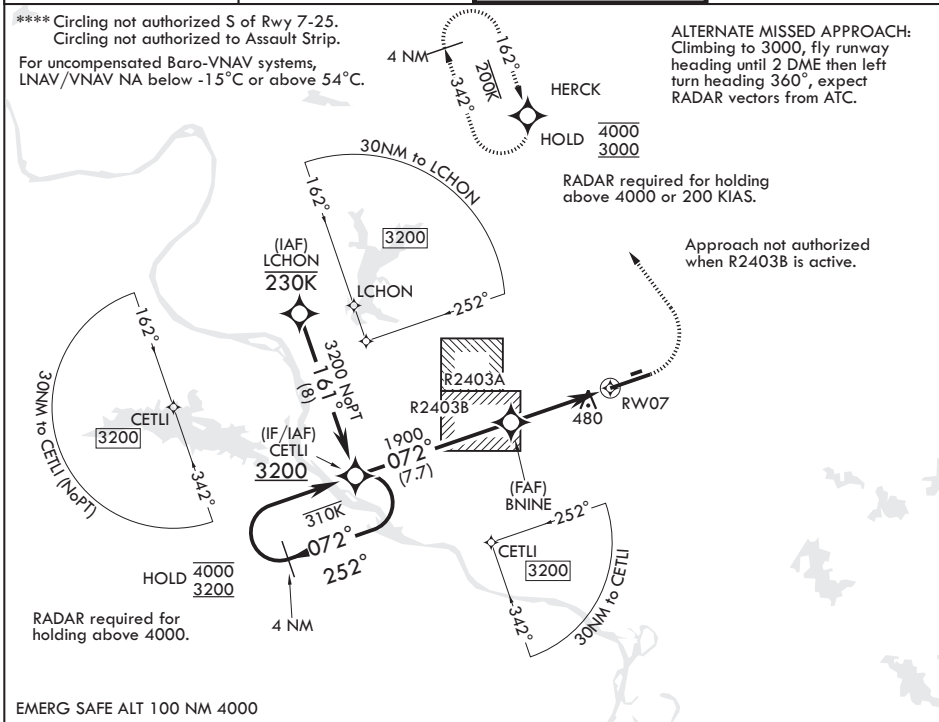
**** Circling not authorized S of Rwy 7-25.
Circling not authorized to Assault Strip.

For uncompensated Baro-VNAV systems,
LNAV/VNAV NA below -15°C or above 54°C.

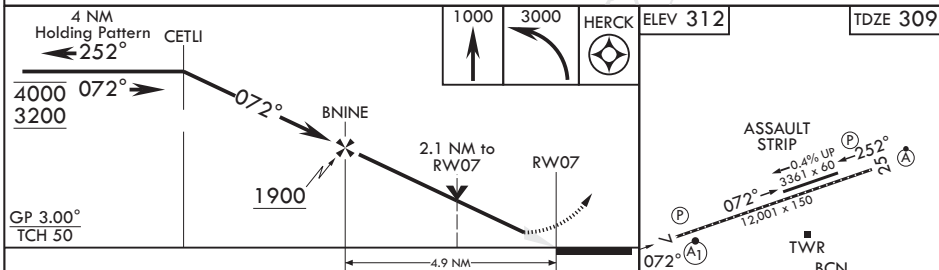
ALTERNATE MISSED APPROACH:
Climbing to 3000, fly runway heading until 2 DME then left turn heading 360°, expect RADAR vectors from ATC.

RADAR required for holding above 4000 or 200 KIAS.

Approach not authorized when R2403B is active.



EMERG SAFE ALT 100 NM 4000



CATEGORY	A	B	C	D
LPV DA*	509/24	200	(200-1/2)	
LNAV/VNAV DA**	790/50	481	(500-1)	
LNAV MDA***	980/24	671 (700-1/2)	980-1 1/2	671 (700-1 1/2)
CIRCLING****	980-1	668 (700-1)	980-1 1/8	1040-2 1/4

ELEV 312	TDZE 309
HIRL Rwy 7-25	TDZL/CL Rwy 25

JACKSONVILLE, ARKANSAS
Amdt 1 27NOV25

34°55'N - 92°09'W

LITTLE ROCK AFB (KLRF)

RNAV (GPS) RWY 7

SC-1, 11 JUN 2026 to 09 JUL 2026

SC-1, 11 JUN 2026 to 09 JUL 2026