

TACAN RWY 25

TACAN Chan	RF 29	APCH CRS	259°	Rwy Idg TDZE	12,001 301	Arprt Elev	312
------------	-------	----------	------	--------------	---------------	------------	-----

[USAF]

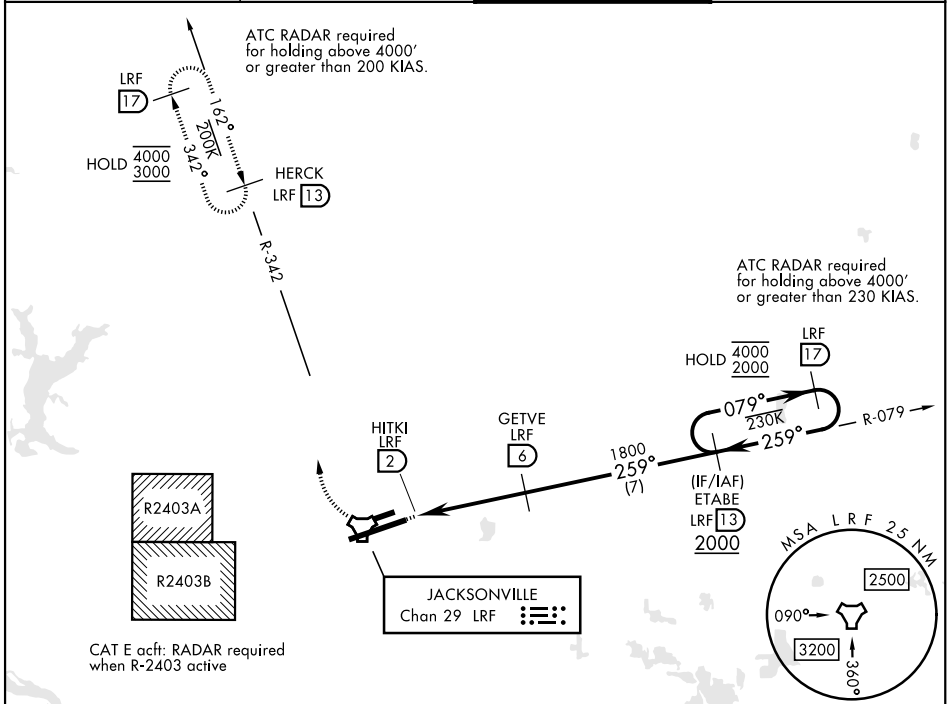
LITTLE ROCK AFB (KLRF)

⚠ * When ALS inop, increase CAT AB RVR to 55, vis to 1 mile; CAT CDE vis to 1½ miles.
** Circling not authorized S of Rwy 07-25. Circling not authorized to Assault Strip.

ALS-F-2 ⓐ ⓑ ⓒ ⓓ ⓔ ⓕ ⓖ ⓗ ⓓ ⓔ ⓕ ⓖ ⓗ

MISSED APPROACH: Climbing right turn to 3000 to intercept LRF R-342 outbound to HERCK and hold as published.
ALTERNATE MISSED APPROACH: Climbing to 3000, fly runway heading until LRF 2 DME, then turn right heading 360° EFC from ATC.

ATIS *	APP/DEP CON	TOWER	GND CON
119.175 251.1	119.5 306.2	120.6 269.075	132.8 275.8



ELEV	312	TDZE	301
------	-----	------	-----

EMERG SAFE ALT 100 NM 4000

3000 HERCK LRF 13

3000 R-342 LRF

4000 2000

1800

259° 079° 259°

3.04° TCH 55

0.5 NM 4 NM

ASSAULT STRIP 07-25 2552 3361 x 60

12,001 x 150

TWR

CATEGORY	A	B	C	D	E
S-25 *	800/24 499 (500-½)		800/50 499		(500-1)
CIRCLING **	800-1 488 (500-1)	880-1 568 (600-1)	880-1½ 568 (600-1½)	1040-2¼ 728 (800-2¼)	1040-2½ 728 (800-2½)

HIRL Rwy 07-25
TDZL/RCLS Rwy 25

TACAN RWY 25

SC-1, 11 JUN 2026 to 09 JUL 2026

SC-1, 11 JUN 2026 to 09 JUL 2026