

TACAN RWY 07

TACAN LRF Chan 29	APCH CRS 058°	Rwy ldg TDZE Arprt Elev
		12,001 309 312

[USAF]

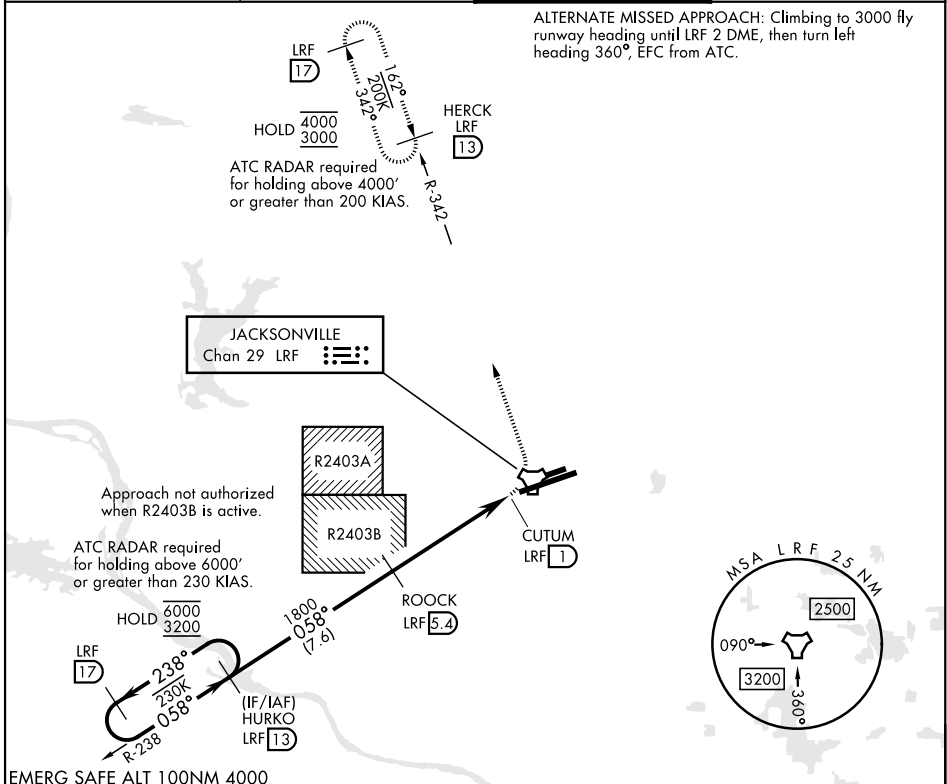
LITTLE ROCK AFB (KLRF)

▼ * When ALS inop, increase CAT AB RVR to 55, vis to 1 mile; CAT CDE vis to 1/4 miles.
 ** Circling not authorized S of Rwy 07-25.
 Circling not authorized to Assault Strip.



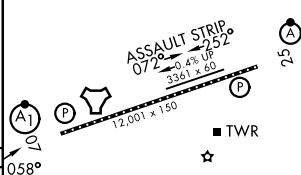
MISSED APPROACH: Climbing left turn turn to 3000 to incip LRF R-342 outbound to HERCK and hold as published.

ATIS ★ 119.175 251.1	APP/DEP CON 119.5 306.2	TOWER 120.6 269.075	GND CON 132.8 275.8
--------------------------------	-----------------------------------	-------------------------------	-------------------------------



ALTERNATE MISSED APPROACH: Climbing to 3000 fly runway heading until LRF 2 DME, then turn left heading 360°, EFC from ATC.

	6000 3200	238° 058°	058°	1800	2.83° TCH 50	4.4 NM	0.5	3000 LRF R-342	HERCK LRF 13	ELEV 312	TDZE 309
CATEGORY	A	B	C	D	E						
S-07 *	980/24 671 (700-1/2)		980-1 1/2	671	(700-1 1/2)						
CIRCLING **	980-1 668 (700-1)		980-1 7/8 668 (700-1 7/8)	1040-2 1/4 728 (800-2 1/4)	1040-2 1/2 728 (800-2 1/2)						



SC-1, 11 JUN 2026 to 09 JUL 2026

SC-1, 11 JUN 2026 to 09 JUL 2026

TACAN RWY 07