

DALLAS FOUR DEPARTURE (DALL4, TTT) 27NOV25  
DALLAS EXEC (RBD)  
DALLAS, TEXAS

LONE STAR DEP CON  
125.2 343.65  
ATIS  
126.35  
CLNC DEL  
118.625  
GND CON  
119.475  
EXECUTIVE TOWER ★  
127.25 (CTAF)

RADAR and DME required.

TOP ALTITUDE:  
ASSIGNED BY ATC

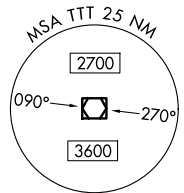
BONHAM  
114.6 BYP  
Chan 93

MAVERICK  
113.1 TTT  
Chan 78

GREGG COUNTY  
112.9 GGG  
Chan 76

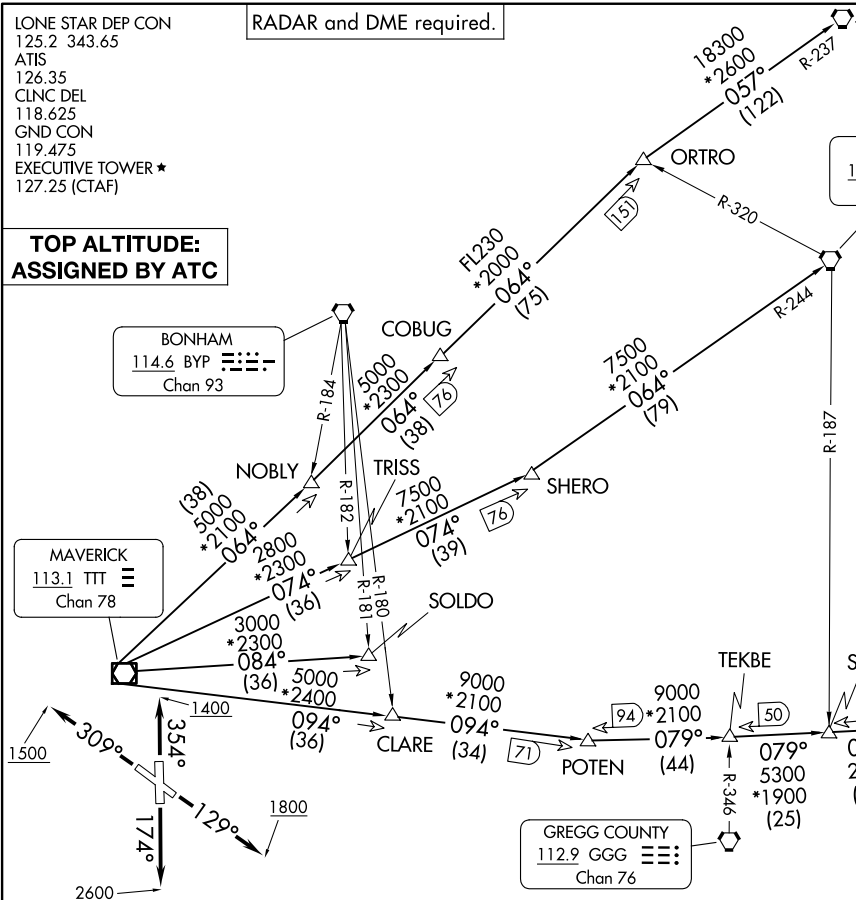
LITTLE ROCK  
115.1 LIT  
Chan 98

TEXARKANA  
116.3 TXK  
Chan 110



TAKEOFF MINIMUMS  
Rwys 13, 31, 35: Standard.  
Rwy 17: 400-2 3/4 or standard with minimum  
climb of 220' /NM to 1200.

NOTE: BELCHER Transition: For aircraft inbound to  
the JAN, MLU, and SHV terminal areas only.  
NOTE: SOLDO Transition: ATC assigned.



(CONTINUED ON FOLLOWING PAGE)

NOTE: Chart not to scale.

(DALL4, TTT) 25331  
DALLAS FOUR DEPARTURE  
AL-742 (FAA)  
DALLAS EXEC (RBD)  
DALLAS, TEXAS

# DALLAS FOUR DEPARTURE

DALLAS, TEXAS



## DEPARTURE ROUTE DESCRIPTION

TAKEOFF RUNWAY 13: Climb on heading 129° to 1800 before turning westbound.

TAKEOFF RUNWAY 17: Climb on heading 174° to 2600 before turning westbound.

TAKEOFF RUNWAY 31: Climb on heading 309° to 1500 before turning southbound.

TAKEOFF RUNWAY 35: Climb on heading 354° to 1400 before turning southbound.

Fly assigned heading for RADAR vectors to appropriate route. Maintain ATC assigned altitude.

BELCHER TRANSITION (DALL4.EIC): From over TTT VOR/DME on TTT R-094 to POTEN, then on EIC R-259 to EIC VORTAC.

LITTLE ROCK TRANSITION (DALL4.LIT): From over TTT VOR/DME on TTT R-064 to ORTRO, then on LIT R-237 to LIT VORTAC.

SOLDO TRANSITION (DALL4.SOLDO): From over TTT VOR/DME on TTT R-084 to SOLDO.

TEXARKANA TRANSITION (DALL4.TXK): From over TTT VOR/DME on TTT R-074 to SHERO, then on TXK R-244 to TXK VORTAC.

SC-2, 11 JUN 2026 to 09 JUL 2026

SC-2, 11 JUN 2026 to 09 JUL 2026