

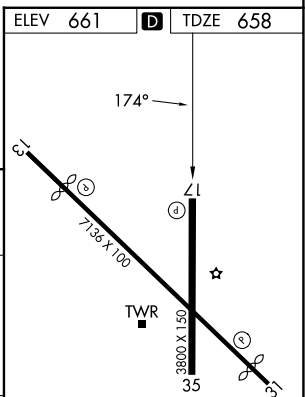
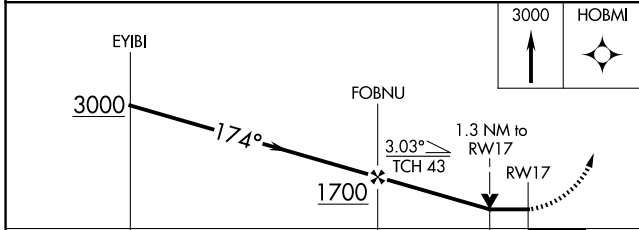
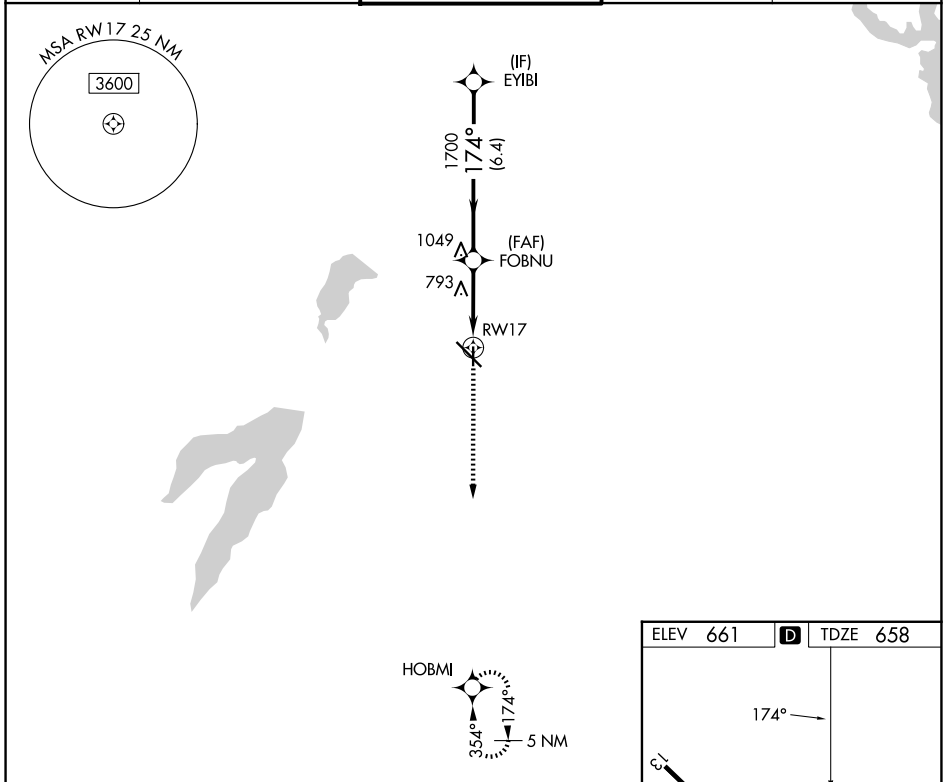
APP CRS <b>174°</b>	Rwy Ldg TDZE Apt Elev	<b>3800</b> <b>658</b> <b>661</b>
------------------------	-----------------------------	---

# RNAV (GPS) RWY 17

DALLAS EXEC (R.B.D)

RNP APCH.	MISSED APPROACH: Climb to 3000 direct HOBMI and hold.
<b>▽</b> <b>▲</b> Rwy 17 helicopter visibility reduction below ¾ SM NA.	

ATIS <b>126.35</b>	LONE STAR APP CON <b>125.2 343.65</b>	EXECUTIVE TOWER * <b>127.25 (CTAF) 0</b>	GND CON <b>119.475</b>	UNICOM <b>122.95</b>
-----------------------	--	---	---------------------------	-------------------------



CATEGORY	A	B	C	D
LNVA MDA	1100-1	442 (500-1)	1100-1 <sup>3</sup> / <sub>8</sub> 442 (500-1 <sup>3</sup> / <sub>8</sub> )	1100-1 <sup>1</sup> / <sub>2</sub> 442 (500-1 <sup>1</sup> / <sub>2</sub> )
CIRCLING	1160-1 499 (500-1)	1220-1 559 (600-1)	1340-2 679 (700-2)	1400-2 <sup>1</sup> / <sub>4</sub> 739 (800-2 <sup>1</sup> / <sub>4</sub> )

REIL Rwy 13, 17, 31 and 35  
MIRL Rwy 13-31 and 17-35 0