

DALLAS, TEXAS

AL-742 (FAA)

26078

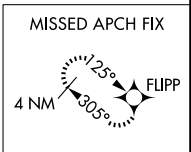
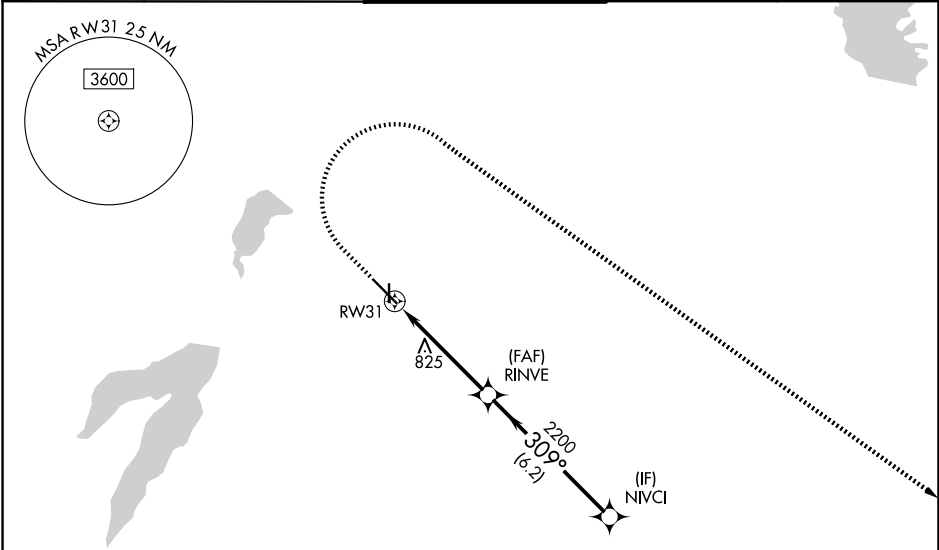
WAAS CH <b>42699</b> <b>W31A</b>	APP CRS <b>309°</b>	Rwy Ldg TDZE Apt Elev	<b>6601</b> <b>660</b> <b>661</b>
--	------------------------	-----------------------------	---

# RNAV (GPS) RWY 31

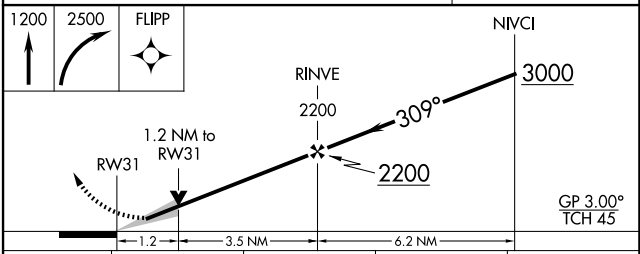
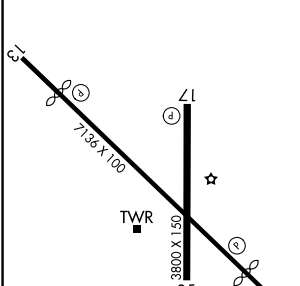
DALLAS EXEC (R.B.D)

RNP APCH - GPS.		MISSED APPROACH: Climb to 1200 then climbing right turn to 2500 direct FLIPP and hold.	
▼ For uncompensated Baro-VNAV systems, LNAV/VNAV NA below -2°C or above 54°C.			

ATIS <b>126.35</b>	LONE STAR APP CON <b>125.2 343.65</b>	EXECUTIVE TOWER★ <b>127.25 (CTAF) 0</b>	GND CON <b>119.475</b>	UNICOM <b>122.95</b>
-----------------------	--	--	---------------------------	-------------------------



ELEV 661	<b>D</b>	TDZE 660
----------	----------	----------



CATEGORY	A	B	C	D
LPV DA	860-3/4		200 (200-3/4)	
LNAV/VNAV DA	993-1		333 (400-1)	
LNAV MDA	1080-1 420 (500-1)		1080-1 1/8 420 (500-1 1/8)	
CIRCLING	1160-1	1220-1	1340-2	1400-2 1/4
	499 (500-1)	559 (600-1)	679 (700-2)	739 (800-2 1/4)

REIL Rwy 13, 17, 31 and 35  
MIRL Rwy 13-31 and 17-35

DALLAS, TEXAS  
Amdt 1C 05OCT23

32°41'N-96°52'W

# RNAV (GPS) RWY 31

SC-2, 11 JUN 2026 to 09 JUL 2026

SC-2, 11 JUN 2026 to 09 JUL 2026