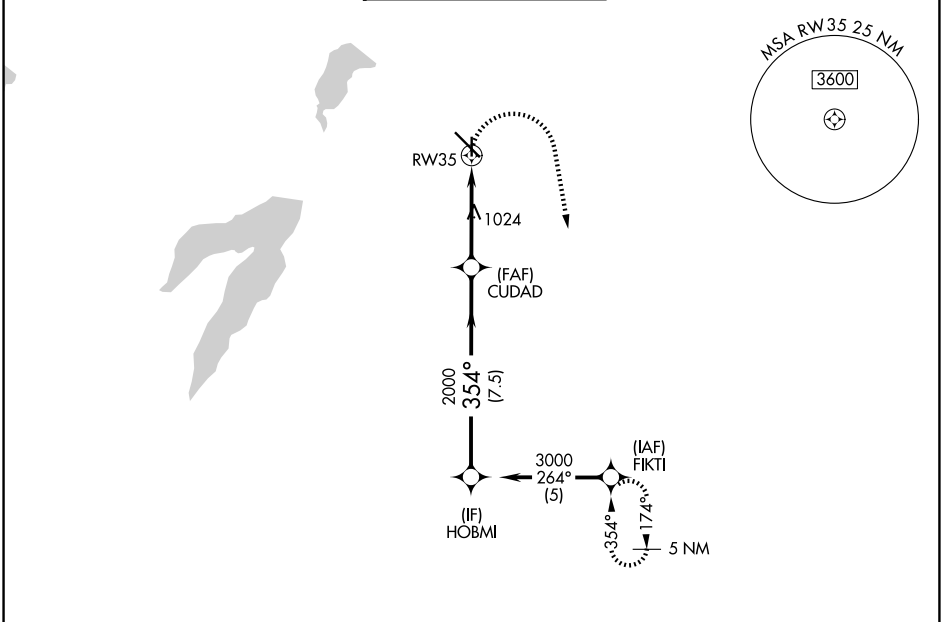


APP CRS 354°	Rwy Ldg TDZE Apt Elev	3800 659 661
------------------------	-----------------------------	---

RNAV (GPS) RWY 35

DALLAS EXEC (R.B.D)

RADAR required for procedure entry. RNP APCH.		MISSED APPROACH: Climbing right turn to 3000 direct FIKTI and hold.		
ATIS 126.35	LONE STAR APP CON 125.2 343.65	EXECUTIVE TOWER ★ 127.25 (CTAF) 0	GND CON 119.475	UNICOM 122.95



SC-2, 11 JUN 2026 to 09 JUL 2026

SC-2, 11 JUN 2026 to 09 JUL 2026

