

DALLAS, TEXAS

AL-742 (FAA)

26078

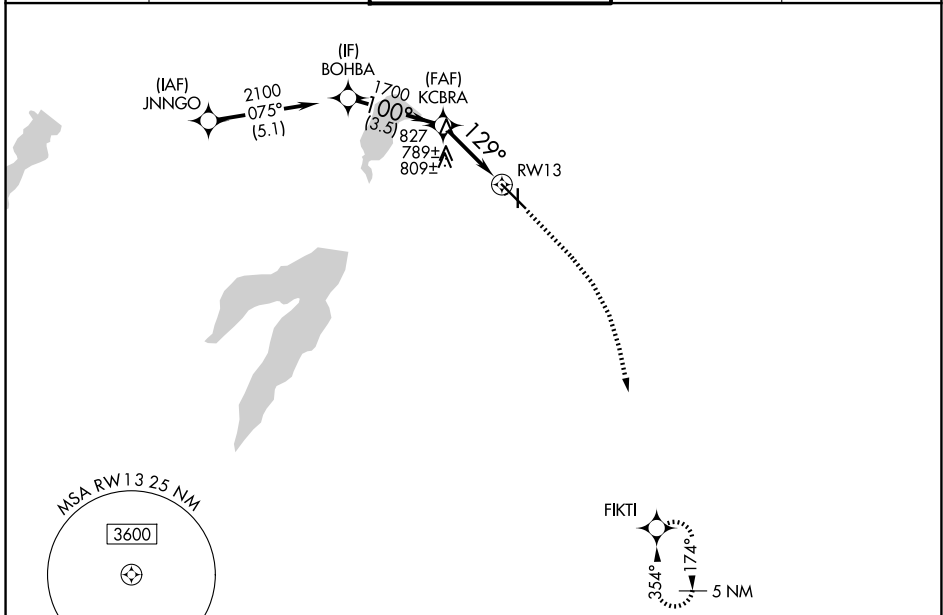
WAAS CH 78444 W13A	APP CRS 129°	Rwy Ldg TDZE Apt Elev	5537 657 661
--	------------------------	-----------------------------	---

RNAV (GPS) Y RWY 13

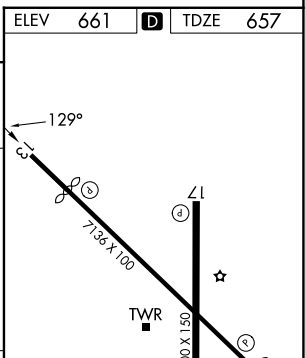
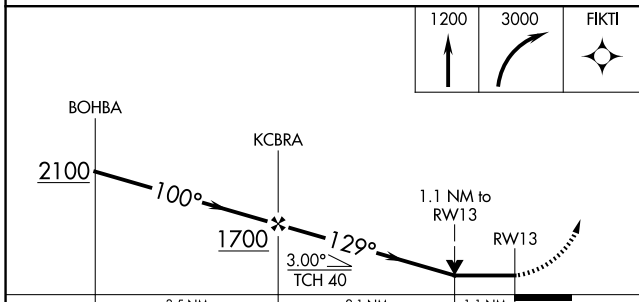
DALLAS EXEC (R.B.D)

RNP APCH - GPS.		MISSED APPROACH: Climb to 1200 then climbing right turn to 3000 direct FIKTI and hold.	
Rwy 13 helicopter visibility reduction below 3/4 SM NA. 			

ATIS 126.35	LONE STAR APP CON 125.2 343.65	EXECUTIVE TOWER ★ 127.25 (CTAF) 0	GND CON 119.475	UNICOM 122.95
-----------------------	--	---	---------------------------	-------------------------



ELEV	661	D	TDZE	657
------	-----	----------	------	-----



CATEGORY	A	B	C	D
LP MDA	1040-1	383 (400-1)	1040-1 1/8	383 (400-1 1/8)
LNAV MDA	1060-1	403 (400-1)	1060-1 1/8	403 (400-1 1/8)
CIRCLING	1160-1 499 (500-1)	1220-1 559 (600-1)	1340-2 679 (700-2)	1400-2 1/4 739 (800-2 1/4)

REIL Rwy 13, 17, 31 and 35
MIRL Rwy 13-31 and 17-35 **0**

DALLAS, TEXAS
Amdt 1 12JUN25

32°41'N-96°52'W

RNAV (GPS) Y RWY 13

SC-2, 11 JUN 2026 to 09 JUL 2026

SC-2, 11 JUN 2026 to 09 JUL 2026